

Specification

	ISM 3600	ISM 3600 F.A.	ISM 1800
Dimensions (W×D×H[with HCU])	2,533×1,673×2,453[2,722] mm	2,532×1,673×2,453[2,722] mm	1,710×1,622×2,217[2,486] mm
Weight	1,133kg(empty)~1,685kg(with case)	1,196kg(empty)~1,763kg(with case)	826kg(empty)~1,015kg(with case)
Power consumption	Single phase 200~230V;50/60Hz		
Air consumption[with HCU]	0.3kW [1.6kW *1]	0.3kW [1.6kW *1]	0.3kW [1.6kW *1]

	ISM 1100	ISM 500	ISM 3900
Dimensions (W×D×H[with HCU])	1,735×936×2,200 mm	1,755×799×2,185 mm	2,534×1,379×2,453[2,722] mm
Weight	460kg(empty)~600kg(with case)	505kg(empty*6 shelves) ~940kg(empty*16 shelves)	1,090kg(empty)~1,706kg(with case)
Power consumption	Single phase 200~230V;50/60Hz		
Air consumption[with HCU]	0.3kW [0.82kW *2]	0.1kW [0.7kW *3]	0.3kW [1.6kW *1]

ISM 3600, 3600 F.A., 3900, 1800, 1100 Case quantity

Model	Sub model name		Type	Total Quantity	7"reel			13"/15"reel					
					8 mm	16 mm	24 mm	8 mm	16 mm	24 mm	32 mm	44 mm	48 mm
ISM 3600	7" ONLY	Double case	A	3,218	2,520	600	98	—	—	—	—	—	—
			B *4	3,338	2,942	396	—	—	—	—	—	—	—
			C *4	3,452	3,452	—	—	—	—	—	—	—	—
		Single case	A	3,158	2,472	592	94	—	—	—	—	—	—
			B *4	3,354	2,962	392	—	—	—	—	—	—	—
			C *4	3,560	3,560	—	—	—	—	—	—	—	—
	15" ONLY	Double case	A	605	—	—	—	270	180	86	55	—	14
			B *4*5	574	—	—	—	30	446	98	—	—	—
		Single case	A	602	—	—	—	271	179	84	55	—	13
			B *4*5	572	—	—	—	30	444	98	—	—	—
	7"+15" MIX	Double case	A	1,989	1,340	320	46	125	85	40	25	—	8
			B *4*6	1,988	1,348	372	—	12	207	49	—	—	—
			C *4*6	2,089	1,824	—	—	10	195	60	—	—	—
		Single case	A	1,964	1,324	314	44	126	84	40	24	—	8
			B *4*6	2,076	1,610	200	—	12	206	48	—	—	—
			C *4*6	2,182	1,920	—	—	10	192	60	—	—	—
ISM 3600 F.A.	7" ONLY	Single case		3,128	2,452	588	88	—	—	—	—	—	—
	15" ONLY			591	—	—	—	262	175	88	52	—	14
	7"+15" MIX	Single case		1,950	1,312	316	48	119	82	41	25	—	7
ISM 3900	7" ONLY	Double case		3,418	2,678	636	104	—	—	—	—	—	—
		Single case		3,352	2,626	626	100	—	—	—	—	—	—
	15" ONLY			643	—	—	—	287	191	91	58	—	16
ISM 1800	7"+15" MIX	Double case		2,033	1,348	320	46	140	96	45	28	—	10
	7" ONLY	Double case		1,640	1,312	282	46	—	—	—	—	—	—
	15" ONLY			297	—	—	—	140	74	36	30	—	17
ISM 1100	7"+15" MIX			1,039	688	168	46	66	37	19	9	—	6
	STANDARD			1,100	998	112	—	—	—	—	—	—	—
	BALANCED			918	501	417	—	—	—	—	—	—	—
ISM 500	H12 / H16			768	—	768	—	—	—	—	—	—	—

ISM 500 position

Model	Sub model name	Total Quantity Position	Shelves	Hight of shelves: 100 mm —		Hight of shelves: 180 mm 7" reel		Hight of shelves: 380 mm 7"/13"/15" reel	
				Position	Shelves	Position	Shelves	Position	Shelves
ISM 500	06 STANDARD	240	6	—	—	80	2	160	4
	10 Shelves	400	10	—	—	400	10	—	—
	16 Shelves	640	16	560	14	80	2	—	—



MANUFACTURE : ESSEGI AUTOMATION S.r.l

www.essegiautomation.com

SELLER・INQUIRY : JUKI CORPORATION 2-11-1 Tsurumaki, Tama city, Tokyo, 206-8511, JAPAN

www.juki.co.jp

JUKI AUTOMATION SYSTEMS GMBH.  
www.juki-smt.com

JUKI AMERICA, INC.  
www.jukiamericas.com

JUKI(CHINA)CO., LTD.  
www.jukichina.com

JUKI INDIA PVT. LTD.  
www.smtjukiindia.com

JUKI(VIETNAM)CO.,LTD.

※Please refer to the product specifications for details. Specifications and appearance may be changed without notice.

May - 2025/Rev.06



Intelligent Storage Management System

ISM Series



お客様サービス：JUKI株式会社 本社  
支店・営業所：工場・倉庫・物流センター  
支店・営業所：工場・倉庫・物流センター  
支店・営業所：工場・倉庫・物流センター  
支店・営業所：工場・倉庫・物流センター

JUKI Smart Solutions

## What is **ISM Series**

**ISM Series** is basically an automatic warehouse.  
ISM can load and unload parts automatically.  
BUT not only that, ISM is also a solution that manages parts efficiently and effectively.

### *Many practical benefits*

- ☐ Reduces inventory counts
- ☐ Follows FIFO order
- ☐ Prevents from collecting errors
- ☐ Simplifies parts data retrieval
- ☐ Eliminates duplication
- ☐ Saves spaces
- ☐ Humidity control and MSD tracking
- ☐ Bag and cut tape management
- ☐ More efficient use of work force
- ☐ Thorough management of records



# ISM Series Lineup



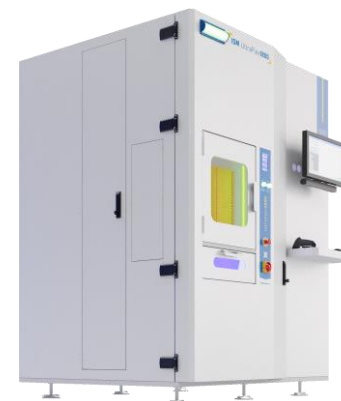
AMR integrated model  
**ISM 3600 F.A.**



Large capacity,  
flexible configuration  
**ISM 3600**



Compact size  
**ISM 1800**



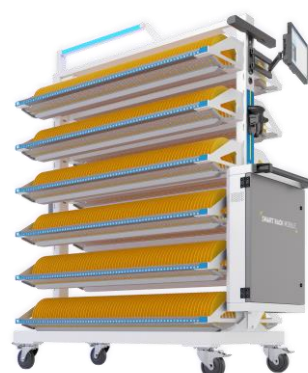
7inch reels only  
**ISM 1100**



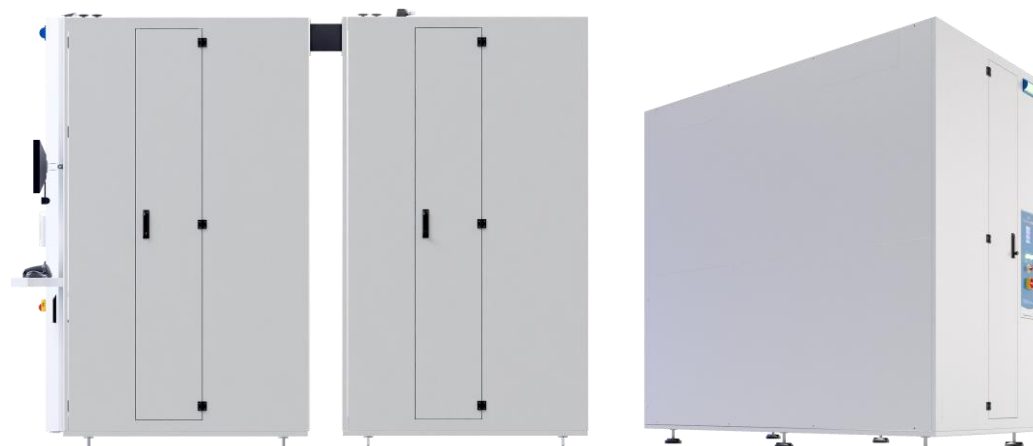
Semi-automatic  
Storage cabinet  
**ISM 500**



Pick-To-Light Dynamic Storage  
**Smart Rack Mobile**



Storage extension module for ISM3600  
**ISM 3900**



Parts Registration System  
**Incoming Material Station 2.0**



ISM software server  
**AutoSMD**



Visualization  
**Dashboard**





## Cases



ESD SAFE



ITEM-FRIENDLY

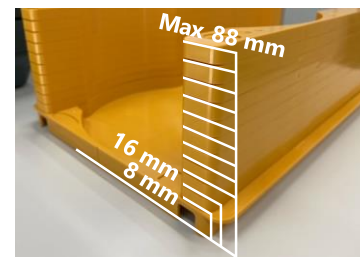
### 3 types



### Thickness adjustable

Maximum 88mm

Optimize storage space



### Available for various parts

For individual/spare parts and tray.

General purpose case compatible (OP)



※NON-ESD





# ISM Series Features



## Insertion & Extraction at one time

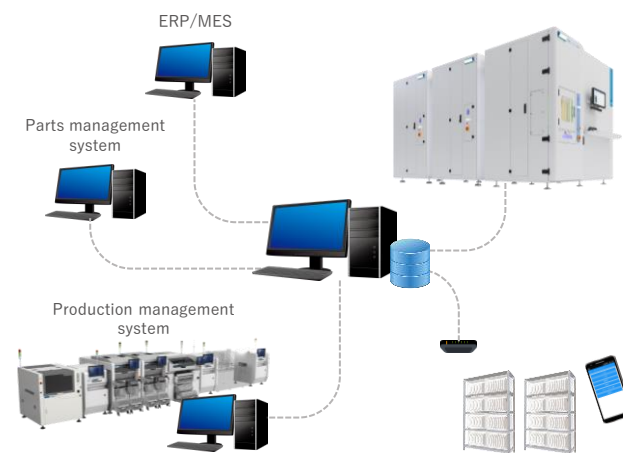


- Cases can be stock up to 27/54 reels at one shot
- Load & unload one place without walking around the warehouse



## System Integration

- File exchange and Web API standard
- Inventory, location, and MSL management
- Integration with core systems and others



## Easy Layout

- Easy to relocate<sup>\*1</sup>
- Scalability

※1 Please consult with us in advance



## Saving Spaces



- Save upper dead space
- Free location



## External Shelf Management



- Normal shelf and drybox managed by ISM server
- No limitation on shape, size or weight



## Traceability

- Traceability in each parts
- Defective parts traceability



## Skill Less

- Easy and simple operation
- Take less time

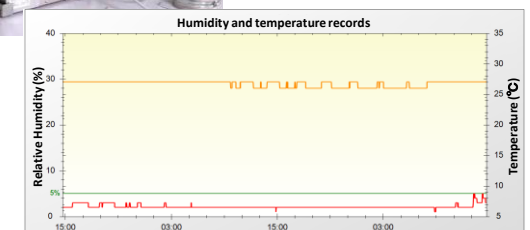


## Humidity Control

- Dehumidifier can be equipped<sup>\*2</sup>
- System management of floor life<sup>\*3</sup>



- ※2 Dehumidifier is equipped on top of a machine. Please refer to the spine for dimensions.
- ※3 Moisture absorption life when exposed to air after opening moisture-proof packaging.



# ISM Series Before & After

Registration

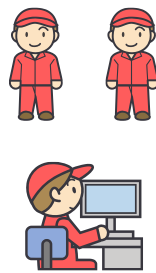
Load & reload

Unload

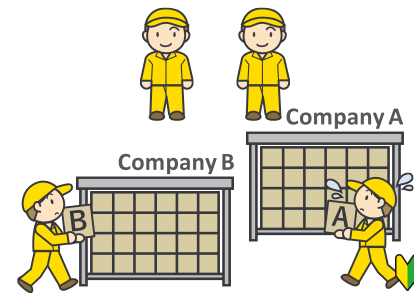
Setup and production

Counting / Traceability

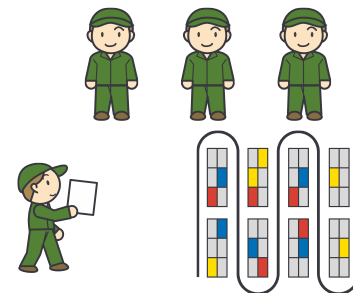
Before



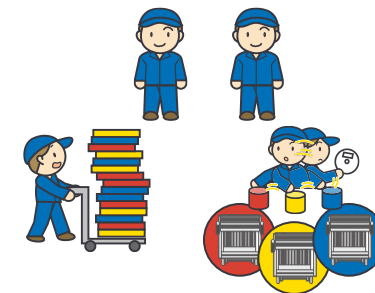
- Manual operation
- Double checking by 2+ people



- Fixed location
- Separate management for each customer



- Walk around shelves
- Right-In / Left-Out
- Picking errors

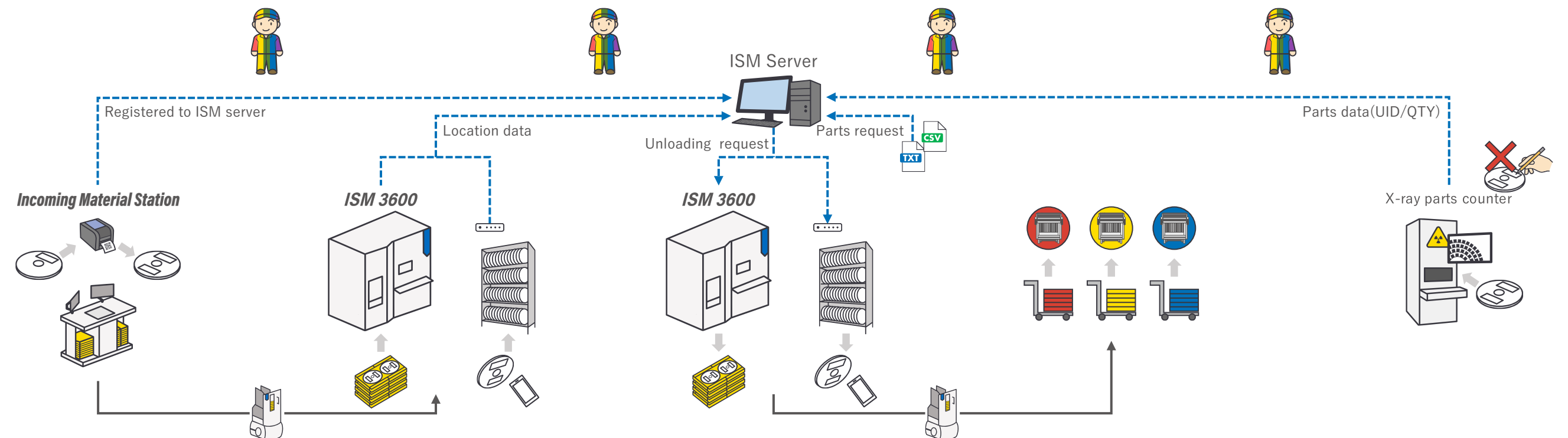


- Sorting work for each trolley
- Rearranging in the order of feeders (cassettes)



- Counting
- MSL calculation
- Inventory

After



- ✓ IMS auto recognition
- ✓ Checking by software
- ✓ Printing label
- ✓ Picture traceability

- ✓ Auto-loading
- ✓ Free location
- ✓ Management regardless of customer
- ✓ External shelves integrated

- ✓ Auto-unloading
- ✓ FIFO followed
- ✓ No human error

- ✓ Loading by cart
- ✓ Auto unload in feeder order

- ✓ X-ray counter
- ✓ MSL report
- ✓ Inventory with data

AUTO  
MATION

SPACE  
SAVING

NO  
HUMAN  
ERROR

SYSTEM  
INTEGRA  
TION

SKILL  
LESS

EASY  
INVENTORY