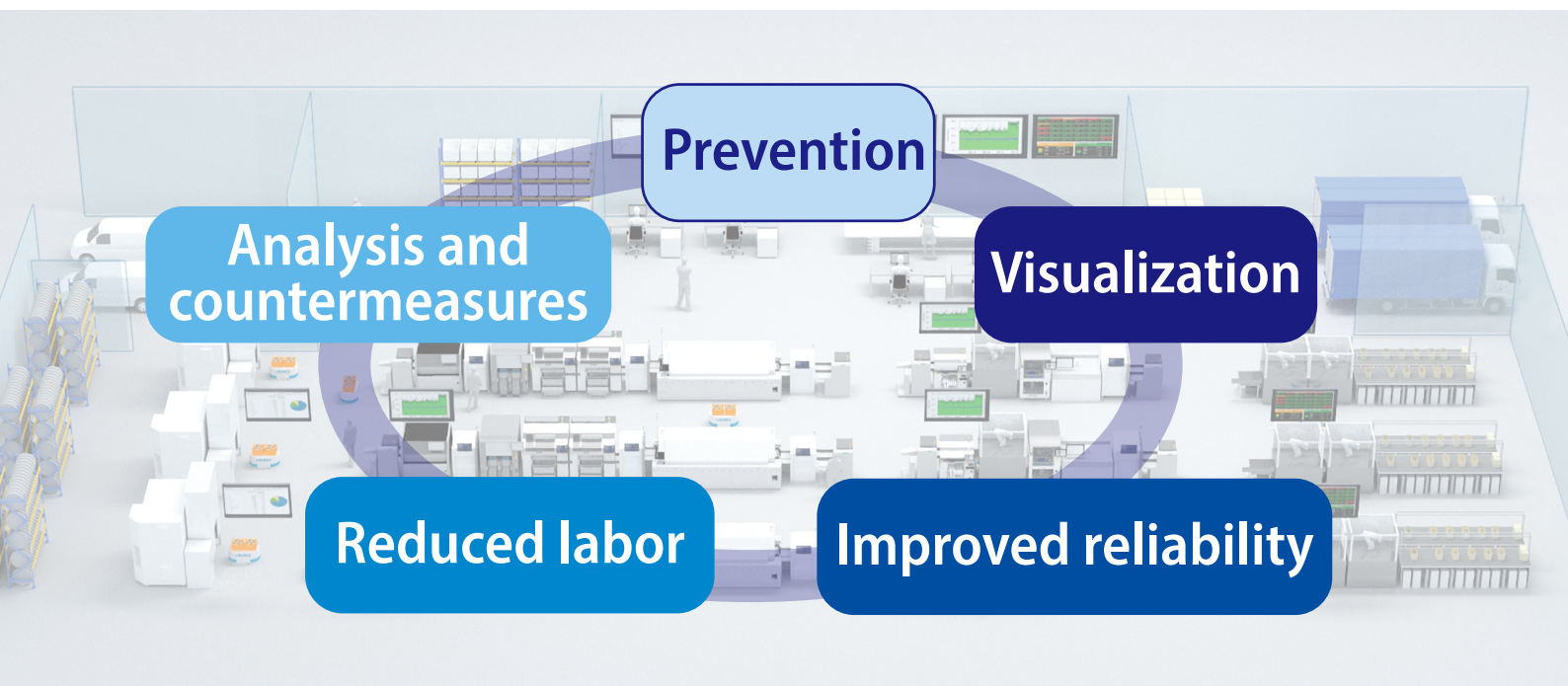


Trace Monitor *(standard)*

Catch and fix production abnormalities!

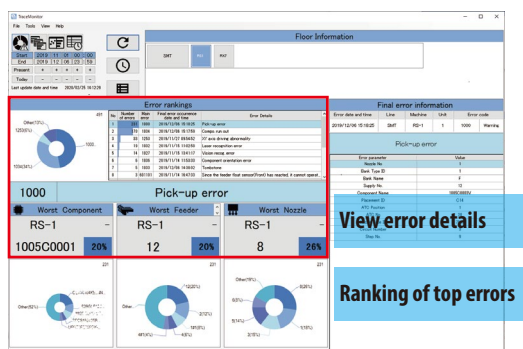
Achieve better results by visualizing production conditions



	Prevention	Analysis and countermeasures	Reduced labor	Improved reliability	Visualization
Before	<ul style="list-style-type: none"> • Problem detected, data collected • Problem detection is delayed with serious consequences 	<ul style="list-style-type: none"> • Difficult to collect data • Collection of data after problems takes time to analyze and correct 	<ul style="list-style-type: none"> • Manual data collection takes time and effort • Data must be processed 	<ul style="list-style-type: none"> • Susceptible to human error Forgotten tasks Transfer error, etc. • Data is unreliable • Data gets lost 	<ul style="list-style-type: none"> • No visibility of line conditions • Information needs to be transmitted • Difficult to compare before and after
After	<ul style="list-style-type: none"> • Data collected continuously • Early detection before the problem gets serious 	<ul style="list-style-type: none"> • Easy data retrieval • Analysis and countermeasures can be taken immediately after a problem 	<ul style="list-style-type: none"> • Automatic data collection • Easy to understand graphs and lists 	<ul style="list-style-type: none"> • Data collected and saved automatically • Reliable data • Reliable collection 	<ul style="list-style-type: none"> • Timely visualization of production conditions • Easy information sharing • Easy verification of improvements

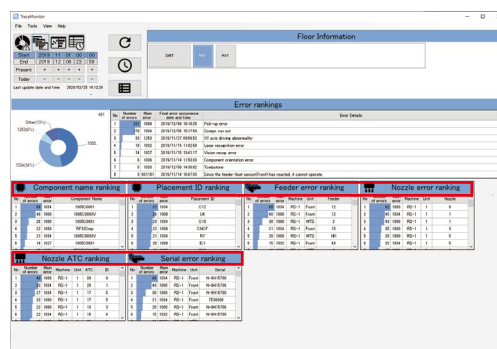
Easy to read visual display ~ 4 steps to identify top problems ~

Error ranking screen → Identify top problems



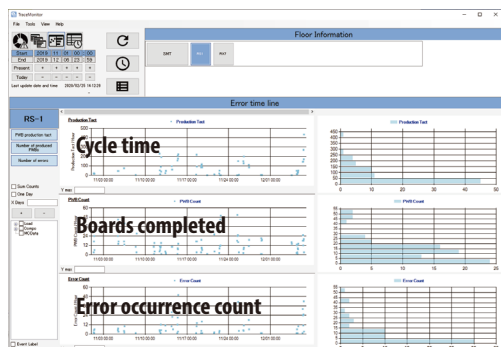
See the most frequent causes of errors for each component in a given time period. The most critical problems and improvements required are identified to improve performance.

Individual ranking screen → Identify top items to improve



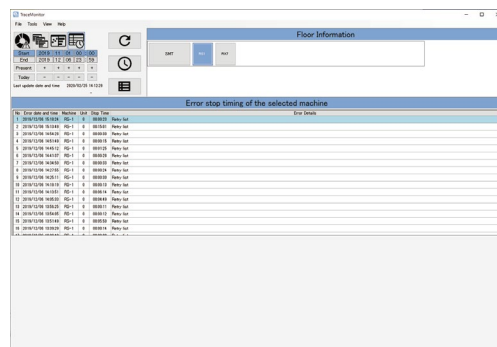
In addition to the items on the error ranking screen, the serial number, nozzle ID, Displays more detailed error details, such as serial number. By analyzing which combination has more errors, it is possible to better identify the root cause.

Event history screen → Focusing on changes



At a glance view of the changes that have occurred. Cycle time, boards completed, and errors are displayed in chronological order. By analyzing the event history and relationships, it is possible to identify when changes occurred.

Error History Display → Stoppage Details



Details of errors and machine stops are displayed chronologically. By analyzing this history, improvements can be made to minimize the unplanned stop time and increase machine availability.

Specification

	Trace Monitor
Max. number of machines connected	15 units (same as JaNets)
Analysis function	Tabulation, display, and search
PC used	Refer to JaNets specifications
Supported models	RS-1R/RS-1, RX-6/RX-6R/RX-6B, RX-7/RX-7R, JM-100
Server	Unnecessary

* Integration JaNets (Basic Editor, Line Manager) is required for installation

*Please refer to the product specifications for details.

■ JUKI Specifications and appearance may be changed without notice.



JUKI SMT SITE



JUKI CORPORATION HEAD OFFICE
The activities of research, development, design, sales, distribution, and maintenance services of industrial sewing machines, household sewing machines and industrial robots, etc., including sales and maintenance services of data entry systems.

MANUFACTURER : JUKI CORPORATION

INQUIRY : JUKI AUTOMATION SYSTEMS CORPORATION

2-11-1, Tsurumaki, Tama-shi, Tokyo 206-8551, JAPAN
TEL.81-42-357-2293 FAX.81-42-357-2285

JUKI AUTOMATION SYSTEMS GMBH.
www.juki-smt.com

JUKI AUTOMATION SYSTEMS INC.
www.jukiamerica.com

TOKYO JUKI INTERNATIONAL
TRADING (SHANGHAI) CO.,LTD.
www.jukichina.com

JUKI INDIA PVT. LTD.
www.smtjukiindia.com

JUKI SMT ASIA CO.,LTD.

JUKI
www.juki.co.jp

Feb-2020/Rev.00