

Offline part generator

JUKI

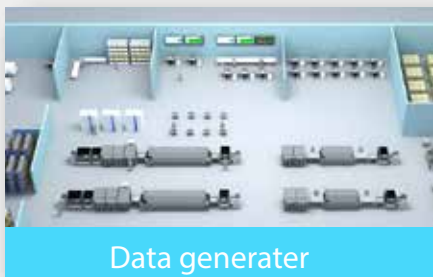
PG-01

Simple, accurate offline part data creation
to improve efficiency



Used image

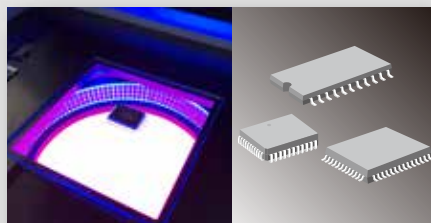
Feature1



Data generater

Create part data offline with-
out stopping production

Feature2



Easy & Skillless operation

Easy operation

Feature3



CONNECT to JUKI Product

Compatibility with
JUKI Products

Create part data offline without stopping production

The Offline Part Generator creates component data offline without using the placement machine. Less downtime during change over and greater line availability for production.

Easy operation

No camera adjustments or special training are required to produce high quality results. Just by placing a component on the imager and entering a few basic details, the PG-01 can measure all critical component details including the component dimensions and lead/ball count and dimensions.



Product image capture

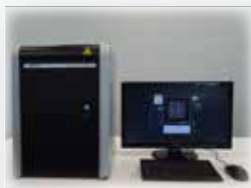


Component input screen

- ① Enter part number
- ② Component type selection
- ③ Lighting settings

Compatibility with JUKI Products

Easy to transfer data to JUKI software and machines



Component measurement by Offline part generator PG-01, export data and save to USB memory.



Import data to database. Component data file is imported to the component database. Any missing data is automatically completed.



Connect with JUKI products

*Contact JUKI for compatible systems.

Specification

Model name	Offline data generator PG-01
Power supply	AC100~240V single-phase 50/60Hz
Apparent power	20 W or less
Machine dimensions (W×D×H)	W365mm×D400mm×H524mm
Mass (approximately)	30kg
Interface	USB 2.0×4 ports USB 3.0×1 port
OS	Windows 10

* Monitor (XGA 1024x768 or more) , keyboard, mouse not include

*Please refer to the product specifications for details.

JUKI CORPORATION HEAD OFFICE

The activities of research, development, design, sales, distribution, and maintenance services of industrial sewing machines, household sewing machines and industrial robots, etc., including sales and maintenance services of data entry systems.



JUKI®

MANUFACTURER : JUKI CORPORATION

INQUIRY : JUKI AUTOMATION SYSTEMS CORPORATION

2-11-1, Tsurumaki, Tama-shi, Tokyo 206-8551, JAPAN
TEL.81-42-357-2293 FAX.81-42-357-2285

<http://www.juki.co.jp>

■ JUKI Specifications and appearance may be changed without notice.
■ This catalogue prints with environment-friendly soyink on recycle paper.

Jun-2019/Rev.02