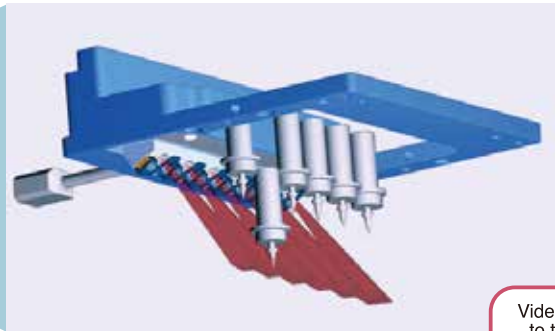


Solutions to improve quality

The "Eyes" of the Mounting Process

Placement Monitor



Ultra-small built-in camera at the machine head

Real-time acquisition of images during absorption and carrying save the traceability information

Video released to the public



An age in pursuit of higher production quality for safer use

How does the Placement Monitor solve your problems?

< Without the Placement Monitor >

Long-term strategy implementation



< When equipped with the Placement Monitor >

Can be solved within a short time



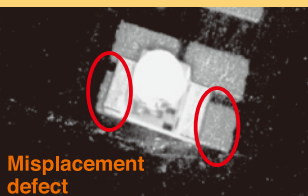
Able to trace produced substrate

Time and date
Cause of the defect
Nozzle number
Feeder line number
Head number
Bar code (option)

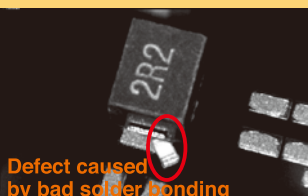
Defect caused



Chip launching mistakes

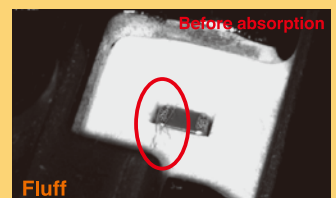


Misplacement defect



Defect caused by bad solder bonding

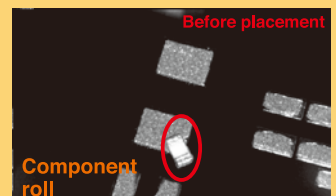
Real causes



Fluff



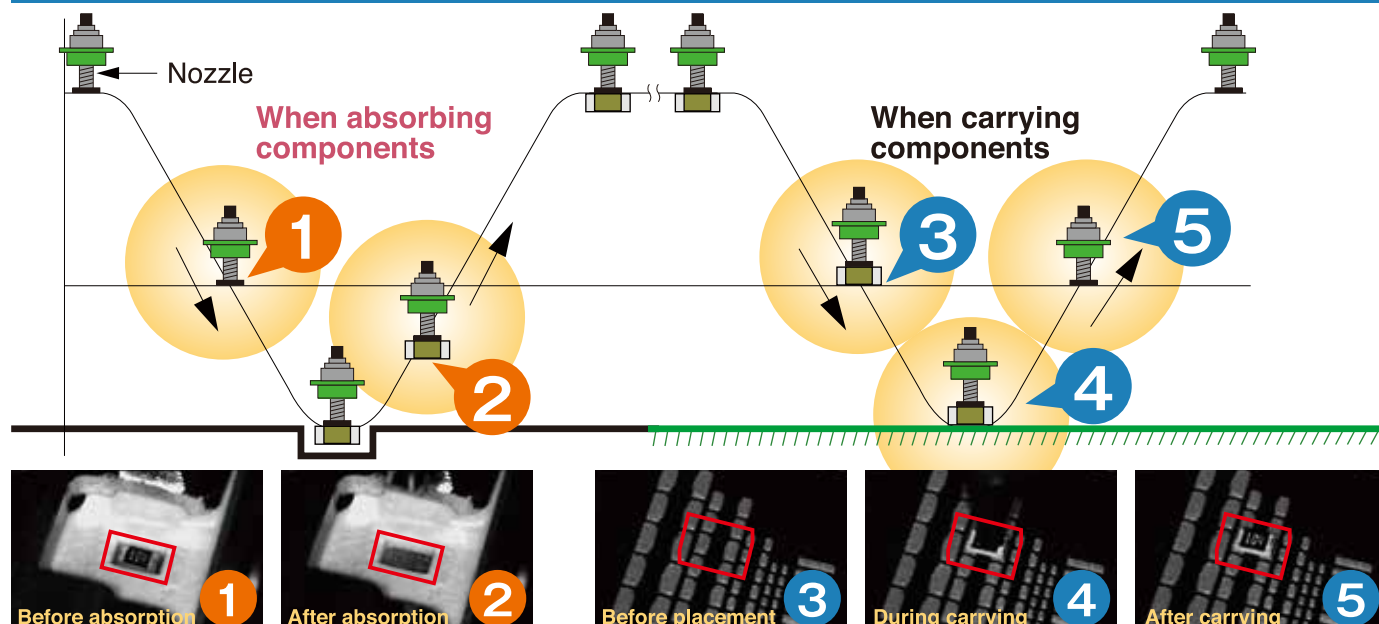
Chosen nozzle mistake



Component roll

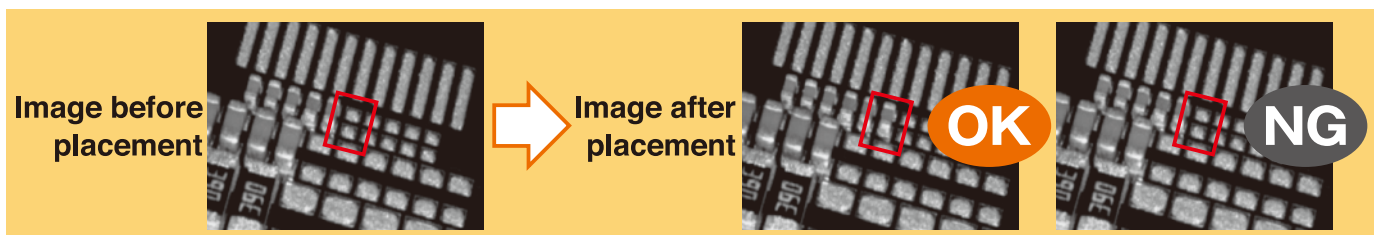
image analysis

Shoot the key points in the process of absorption and carrying



Help to improve the production quality of miniature components

By comparing the images captured before and after component placement, it is possible to judge whether the component is present or absent.



Specifications

(Basic Specification)

Supported Model		KE-2070	KE-3010	KE-2080/80R	KE-3020V/20VR	FX-3R/FX-3RA
Camera field of view		12.0×7.5mm		10.3×7.3mm		10.3×6.1mm
Estimated data size of captured images	Capacity consumption per image	Approximately 200KB(*.bmp),50~120KB(*.png)(Monochrome)				
	Capacity consumption per hour	Approximately18.3GB	Approximately18.5GB	Approximately16.7GB	Approximately17.1GB	Approximately52.8GB※4※5
Component presence of absence judging	Component size	Min.0.4×0.2mm~Max.5.0×5.0mm				
	Component height	Max.2.0mm				

(Computer Specifications)

CPU	2.66GHz or faster (Intel Core™ 2 Quad or more)
Memory	4GB or more
HDD Capacity	C drive: 750GB or more (SATA) D drive: 2.25TB or more (SATA, RAID 0) (Create C drive and D drive; create the data storage area in D drive.Note) *1 *2
Chipset	Intel X58 chipset or the equivalent
DVD-ROM Drive	1 or more unit
USB port	1 port or more
LAN port	1 port or more
Monitor resolution	1024 × 768 pixels or greater
Expansion slot	1 PCI bus slot *3
OS	Microsoft Windows 7 Professional 32-bit

*1 External hard Drive D cannot execute the system.

2 HDD capacity of the recommended specifications is approximately 1.3 M images (.bmp) (equivalent to 2.6 M components).

*3 An IEEE1394a expansion card specified by JUKI is to be connected to the slot for communication with a mounter.

*4 It is a total capacity when taking four images with four placement monitors installed.

*5 Five-image mode is selectable. Feel free to contact us for more details.

*The PC used with the Placement Monitor is not included.

*The number of attachable Placement Monitors and the number of required PC(s) may vary by model.

*Microsoft Windows 7 is a registered trademark of Microsoft Corporation in the United States and other countries.

*Intel Core is a trademark of Intel Corporation in the United States and other countries.

*Please refer to the product specifications for details.



JUKI CORPORATION HEAD OFFICE

The activities of research, development, design, sales, distribution, and maintenance services of industrial sewing machines, household sewing machines and industrial robots, etc., including sales and maintenance services of data entry systems.

JUKI®

MANUFACTURER : JUKI CORPORATION

INQUIRY : JUKI AUTOMATION SYSTEMS CORPORATION

2-11-1, Tsurumaki, Tama-shi, Tokyo 206-8551, JAPAN
TEL.81-42-357-2293 FAX.81-42-357-2285

■JUKI Specifications and appearance may be changed without notice.

<http://www.juki.co.jp>

Jun-2019/Rev.07