

ENGLISH

**PLC-2710NV
INSTRUCTION MANUAL**

CONTENTS

1. Specifications	1
2. Threading the machine head.....	2



CAUTION

This Instruction Manual for the PLC-2710NV only describes their differences from the standard models (PLC-2710V).

For safety-related information, carefully read and fully understand "Safety precautions" described in the Instruction Manual for the standard models before using your sewing machine.

1. Specifications

PLC-2710NVS70BBZ

Item	Application
Model	PLC-2710NV
Sewing speed	Max. 2,500 sti/min Refer to "10. SEWING SPEED TABLE" in the Instruction Manual for the standard model.
Stitch length	Max. 12 mm
Needle	SCHMETZ 134×35 (Nm 125 to Nm 200) (Standard : Nm 140)
Applicable thread size for sewing	#30 to #0 (US: #46 to #266, Europe: 60/3 to 10/3)
Applicable thread size to be cut	#30 to #0 (US: #46 to #266, Europe: 60/3 to 10/3)
Motor	AC servo motor
Presser foot pressure control	Electronic control
Horizontal feed control	Electronic control
Alternate vertical feed control	Electronic control
Lubricating oil	JUKI New Defrix Oil No. 1 (equivalent to ISO standard VG7) or JUKI MACHINE OIL No. 7
Number of patterns	Sewing pattern99 patterns (For the polygonal shape sewing, as many as 10 patterns can be registered.) Cycle sewing pattern9 patterns Custom-pitch pattern20 patterns Condensation custom pattern9 patterns
Noise	- Equivalent continuous emission sound pressure level (L_{pA}) at the workstation: A-weighted value of 83.5 dB; (Includes $K_{pA} = 2.5$ dB); according to ISO 10821- C.6.2 - ISO 11204 GR2 at 2,500 sti/min. - Sound power level (L_{WA}); A-weighted value of 90.5 dB; (Includes $K_{WA} = 2.5$ dB); according to ISO 10821- C.6.2 - ISO 3744 GR2 at 2,500 sti/min.

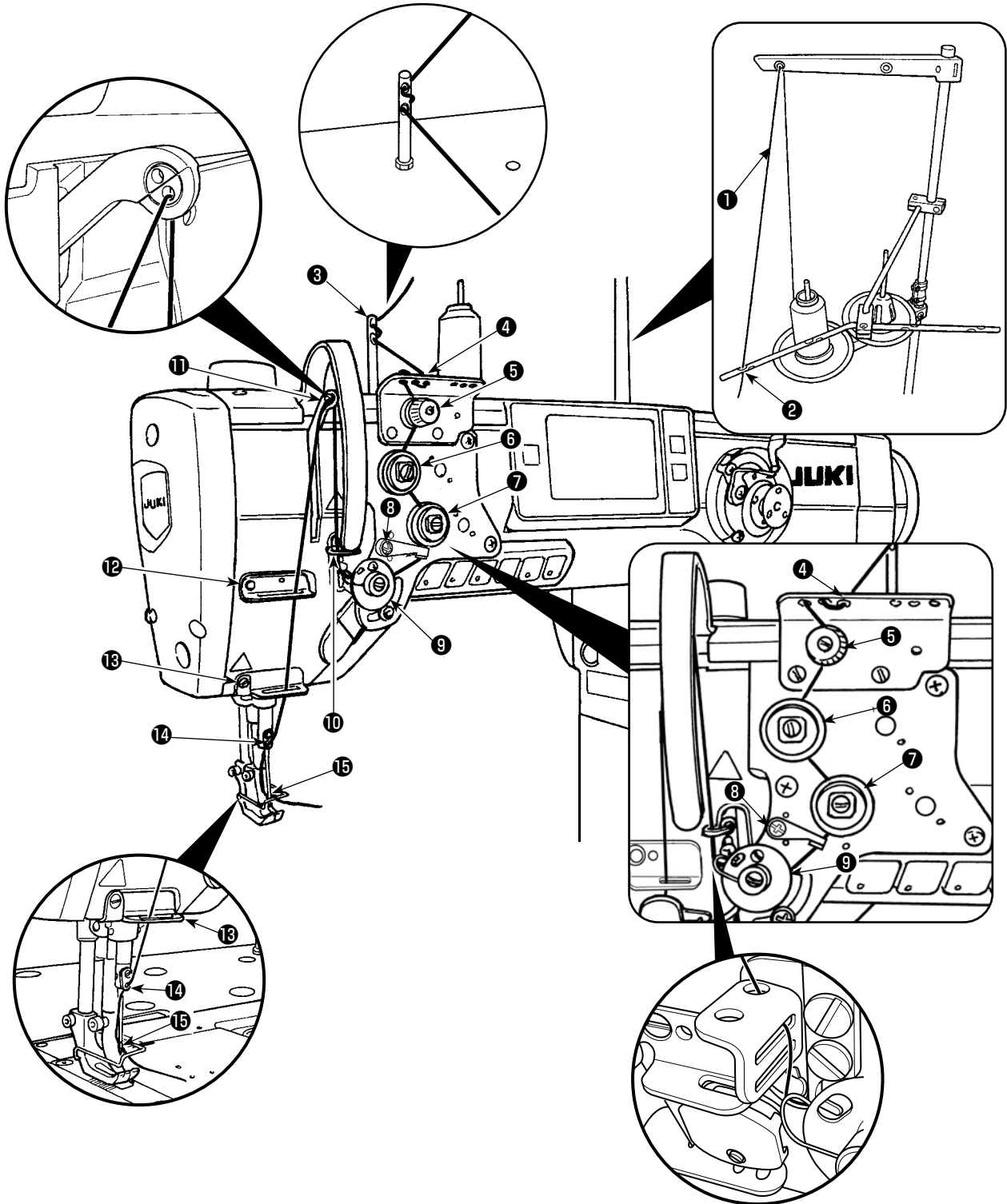
2. Threading the machine head



WARNING :

To protect against possible personal injury due to abrupt start of the machine, be sure to start the following work after turning the power off and ascertaining that the motor is at rest.

Thread the machine head following the order as illustrated in the figure.



If you want to perform thread trimming at a position where no material exists, it is necessary to change thread guide 13 with the suitable thread guide. The thread guide to be used instead of the current one is supplied with the unit as an accessory.
Part number of replacement thread guide: 40034675