

***ENGLISH***

**MF-7900-E22,23  
INSTRUCTION MANUAL**

# CONTENTS

<b>I. SPECIFICATIONS.....</b>	<b>1</b>
<b>II. IN CASE OF USING E22 .....</b>	<b>1</b>
1.Installing procedure .....	1
2.Adjustment procedure .....	5
<b>III. IN CASE OF USING E23 .....</b>	<b>6</b>
1.Installing procedure .....	6
2.Adjustment procedure .....	8
<b>IV. WITH REGARD TO THE ACCESSORIES (TENSION ROLLER) .....</b>	<b>9</b>
1.Installing procedure .....	9
2.Adjustment procedure .....	10
<b>V. DRAWING OF THE TABLE .....</b>	<b>12</b>

## I. SPECIFICATIONS

Model	MF-7900-E22, MF-7900-E23	
Model name	E22 : Machine for attaching endless spandex elastic tape (With manual open/close type binder) E23 : Machine for attaching endless spandex elastic tape (With pneumatic open/close type binder)	
Sewing speed	Max. 5,000 sti/min (at the time of intermittent operation) (provided with PL12 or 13) Speed of stitch at the delivery. 4,000 sti/min (at the time of intermittent operation) (provided with PL12 or 13)	
Needle gauge	3-needle	5.6mm, 6.4mm
Differential feed ratio	1 : 0.6 to 1 : 1.8 (Stitch length less than 2.5 mm) Provided with micro differential feed adjustment mechanism (Micro-adjust)	
Stitch length	0.9 to 3.6 mm (Adjustable up to 4.5 mm)	
Binder open/close amount	40mm	
Needle bar stroke	33mm (35 mm in the case the eccentric pin is changed over)	
Noise	- Equivalent continuous emission sound pressure level ( $L_{pA}$ ) at the workstation : A-weighted value of 79.5 dB; (Includes $K_{pA} = 2.5$ dB); according to ISO 10821- C.6.2 -ISO 11204 GR2 at 4,500 sti/min.	

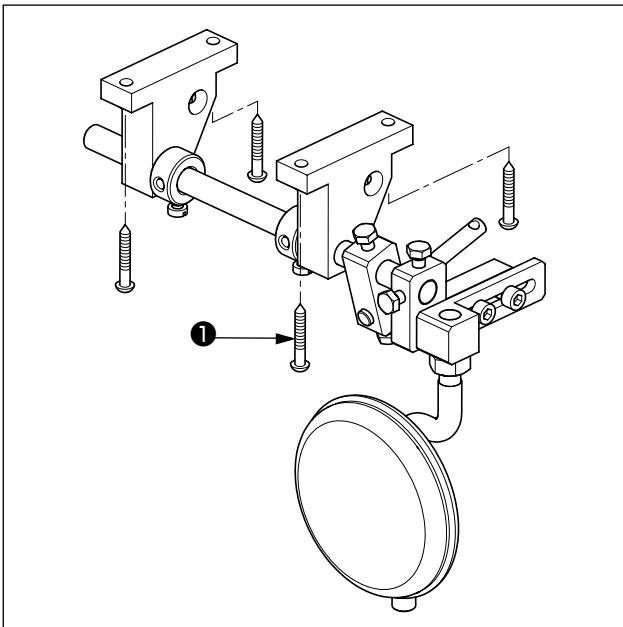
## II. IN CASE OF USING E22

### 1. Installing procedure

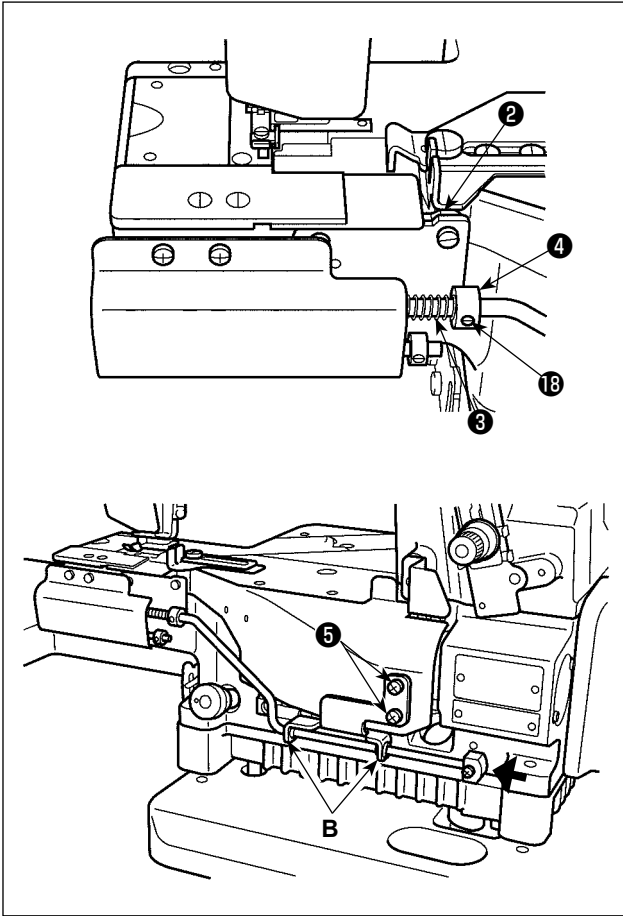


**WARNING :**

To protect against possible personal injury due to abrupt start of the machine, be sure to start the following work after turning the power off and ascertaining that the motor is at rest.



- 1) Installing the binder close/open knee switch  
Install the binder close/open knee switch under the machine table with wood screws ❶.

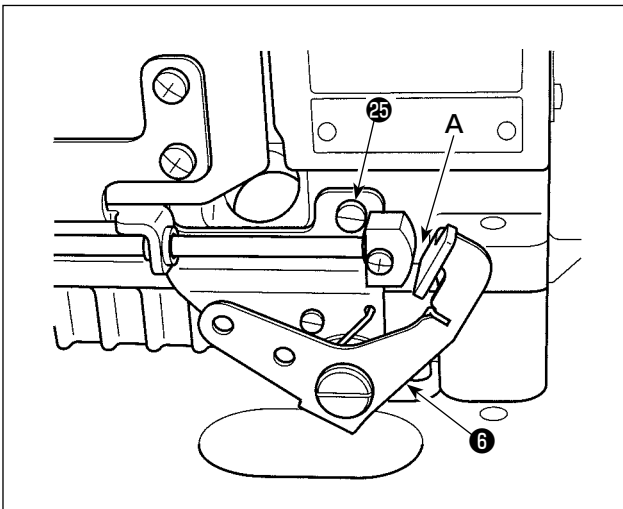


- 2) Installing the binder open/close device  
 Fit spacer **2** and install binder open/close device **3** with screws (plus-minus screw, black, screw shank length 8 mm) **5**.



**Readjust screws **5** when the device does not return smoothly.**

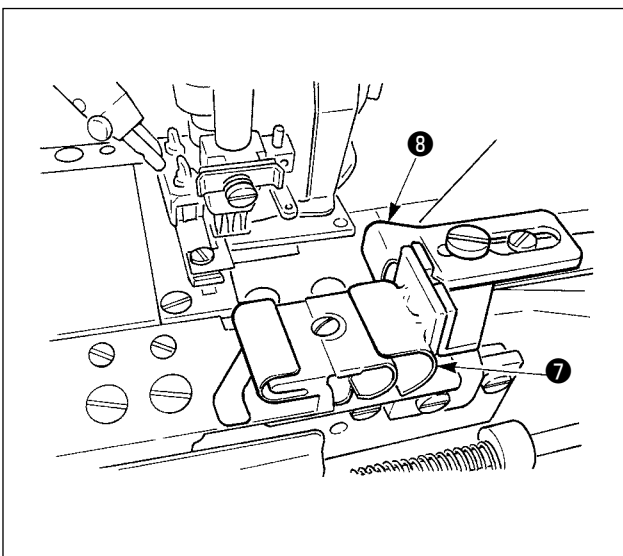
Loosen the screw **18** in collar **4**. Adjust the spring pressure of the binder open/close device. After the installation of the open/close device, apply grease (exclusive grease; JUKI part number: 13525506) supplied with the device to B section.



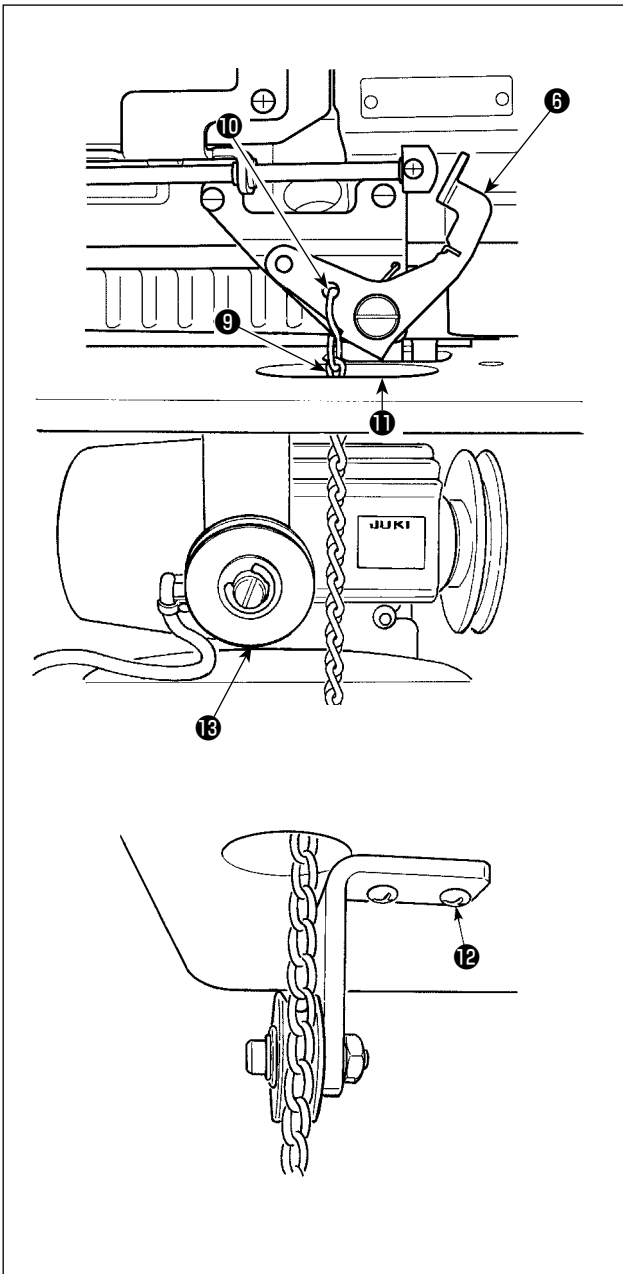
- 3) Installing the lever  
 Install lever asm. **6** with screws (Slotted screw, black, screw shank length 14 mm) **25**.  
 Apply the grease supplied with the machine to the contact section A of lever asm. **6**.



**Confirm that there is a clearance at section A after installing the lever asm.**



- 4) Installing the binder and the elastic guide  
 Install binder **7** and elastic guide **8**.

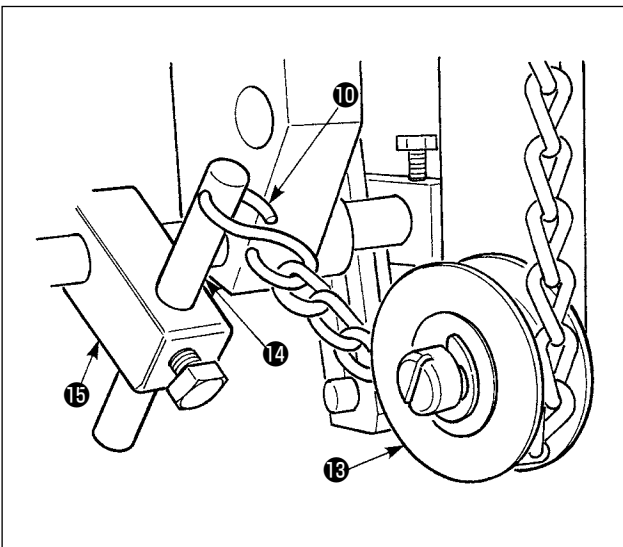


### 5) Installing the chain and pulley

Install chain for binder open/close (9) to lever asm. (6) with S-hook (10). Suspend the chain through hole (11) in the table. Adjust the longitudinal position of roller asm. (13) so that the chain fits in the roller groove. Fix the roller asm. with wood screw (12).



**When the chain is installed in the state that the position of the groove of the roller and the chain is not proper, abnormal friction of the chain occurs. So, install the chain with care.**

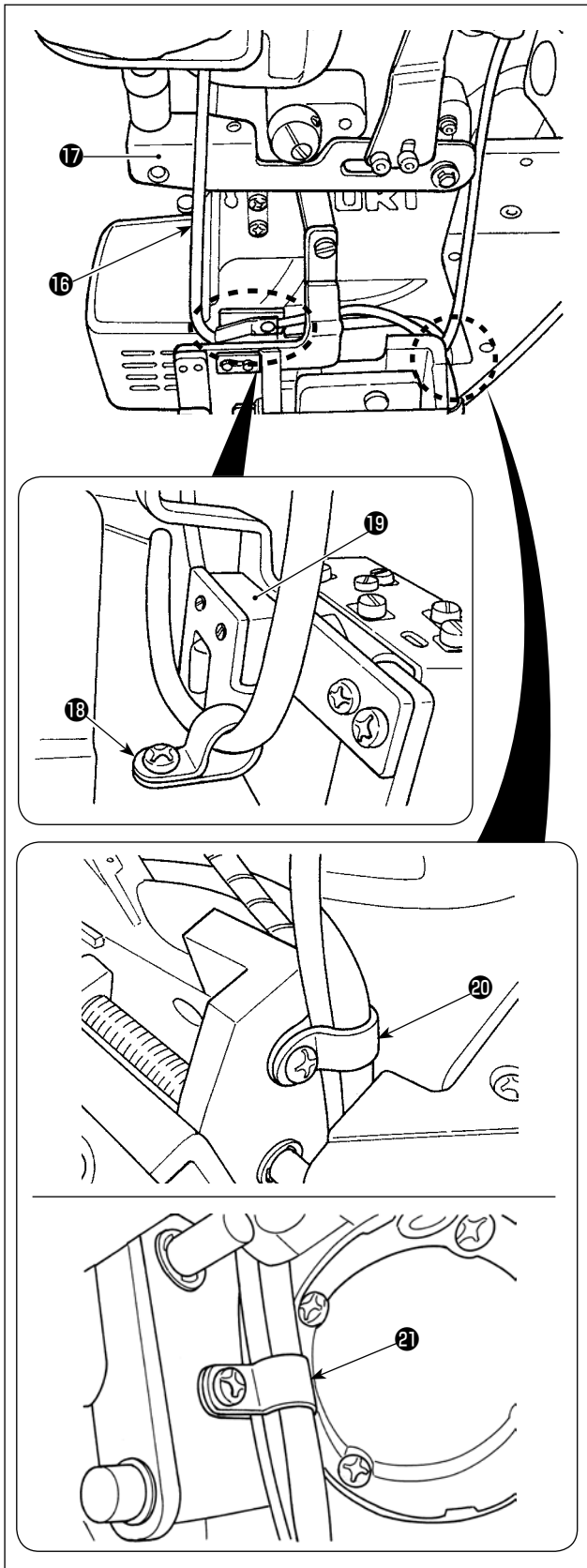


### 6) Connecting the chain

After installing roller asm. (13), fit the chain to the groove of the roller, put S-hook (10) in the top-end hole of open/close lever (14), and connect the chain.



**Adjust the longitudinal position of lever block (15) so that the chain smoothly flows in the groove of the roller when open/close lever (14) works.**



7) Installing the AK solenoid cord

Install AK solenoid cord 16 as illustrated in the figure. Route the cord behind presser bar lifting lever 17.

**Caution** If the cord is routed in front of the lever, the cord can be caught under lever 17, resulting in a breakage of the cord.

Fix the cord with cord band 18. Pass the cord between thread trimming sensor 19 and the frame.

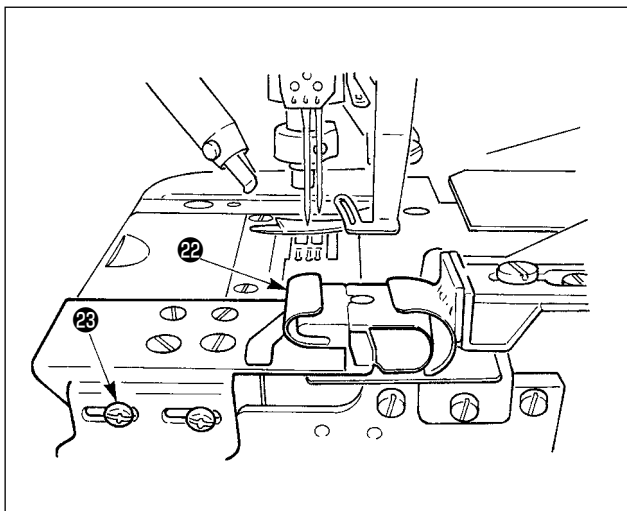
Fix the cord with cord bands 20 and 21 (two locations) on the side face of the solenoid bracket.

## 2. Adjustment procedure



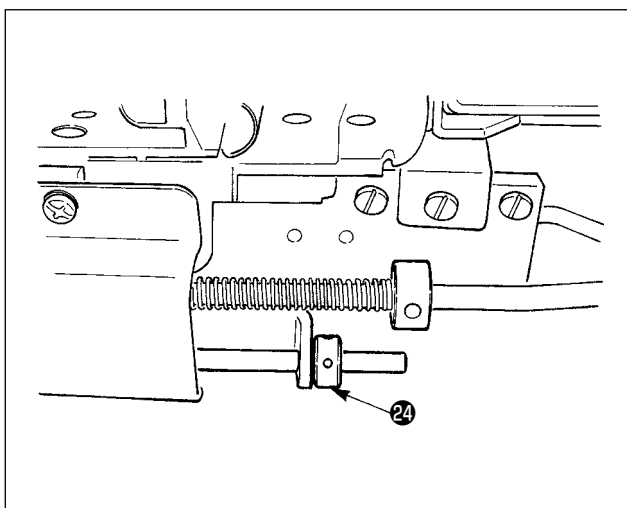
### WARNING :

To protect against possible personal injury due to abrupt start of the machine, be sure to start the following work after turning the power off and ascertaining that the motor is at rest.



#### 1) Adjusting the position of the binder

Perform the adjustment of the position of binder 22 with screws 23.



#### 2) Adjusting the open/close amount of the binder

Adjust the open/close amount of the binder with collar 24.

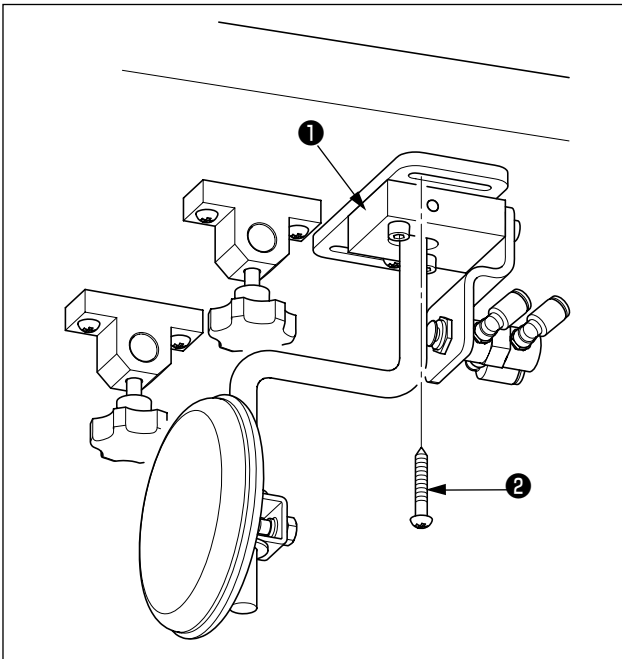
### III. IN CASE OF USING E23

#### 1. Installing procedure

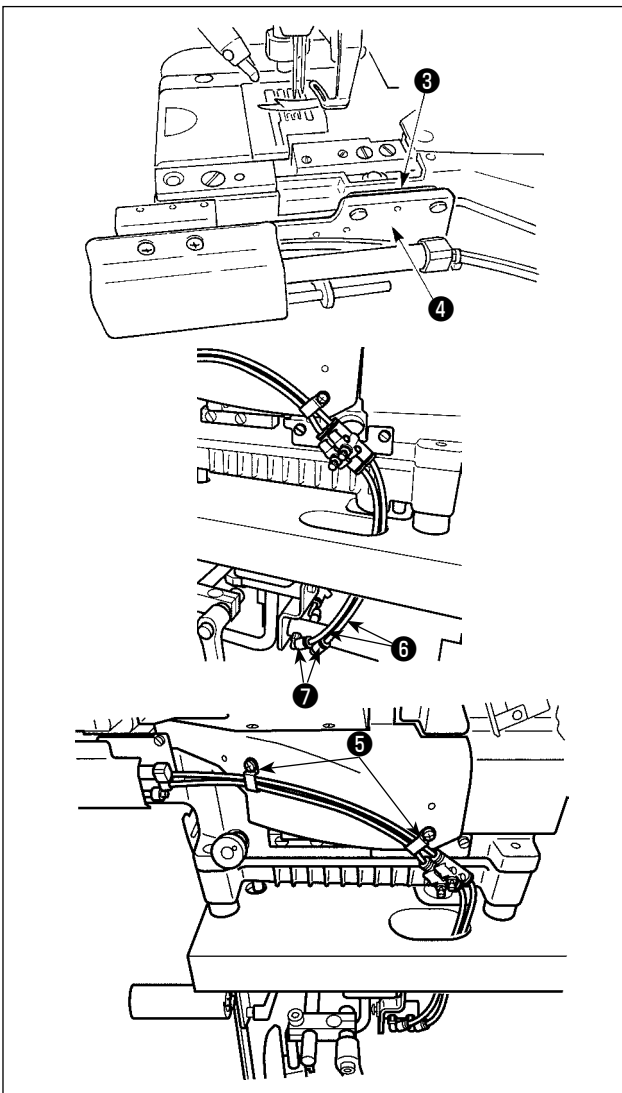


**WARNING :**

To protect against possible personal injury due to abrupt start of the machine, be sure to start the following work after turning the power off and ascertaining that the motor is at rest.

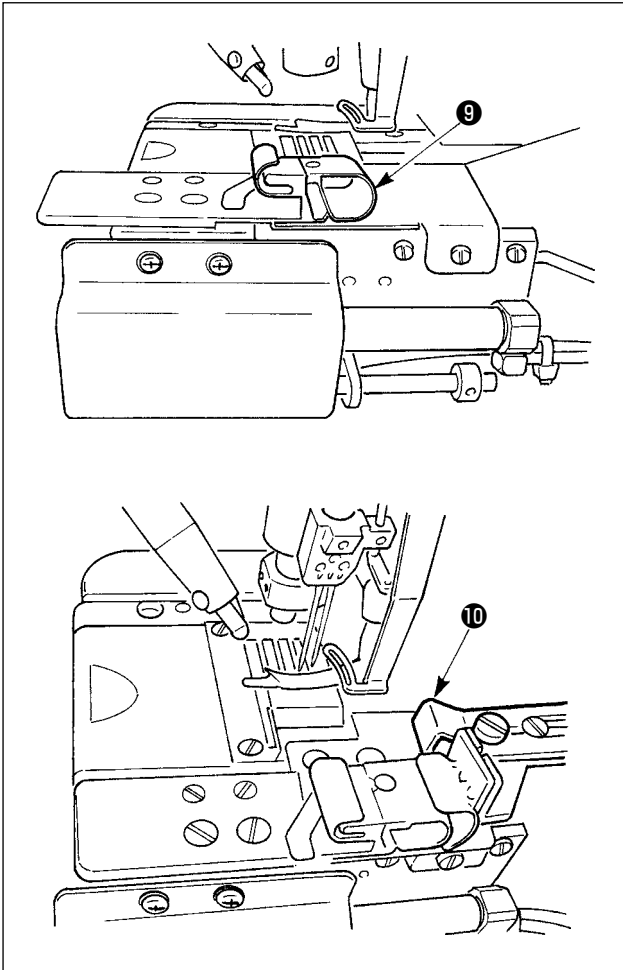


- 1) Installing the binder open/close knee switch asm **1** under the table with wood screws **2**.

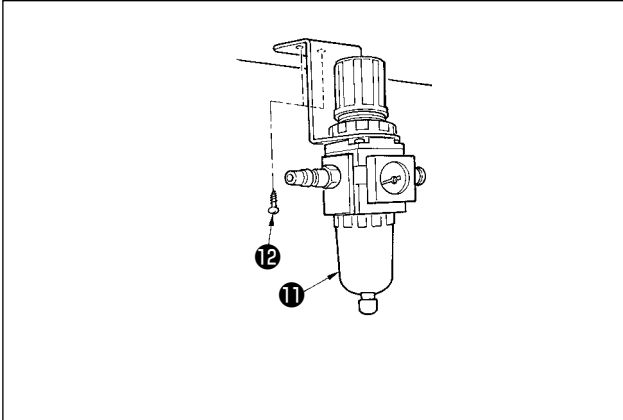


- 2) Installing the binder open/close device  
Place spacer **3** and install binder open/close device **4**. Insert air tubes **6** into joints **7** of binder open/close knee switch asm. Fix air tube **6** with air tube holder **5**.





- 3) Installing the binder and the elastic guide  
Install binder **9** and elastic guide **10**.



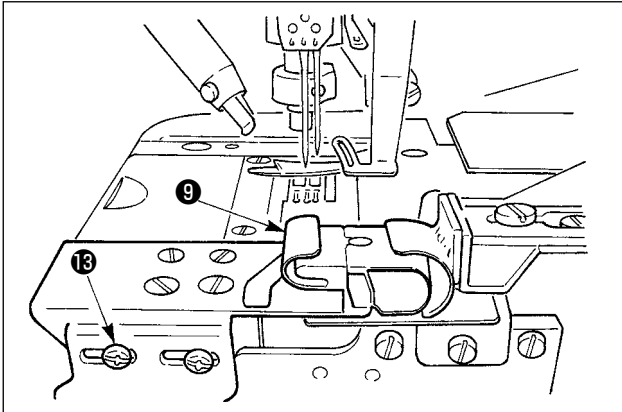
- 4) Installing the air regulator  
Install air regulator asm. **11** under the table with wood screws **12**.

## 2. Adjustment procedure

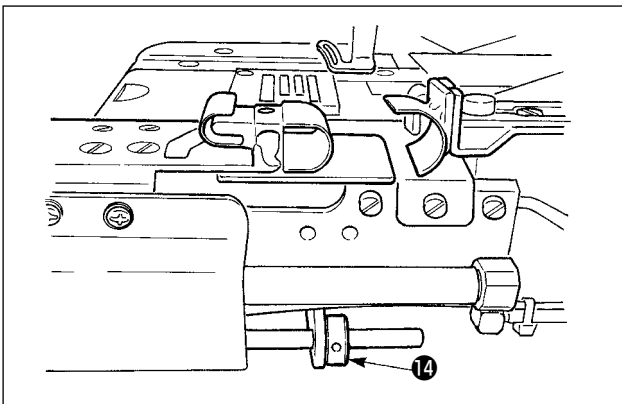


### WARNING :

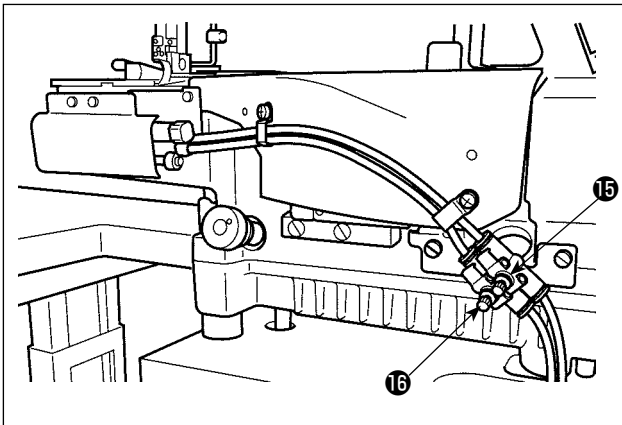
To protect against possible personal injury due to abrupt start of the machine, be sure to start the following work after turning the power off and ascertaining that the motor is at rest.



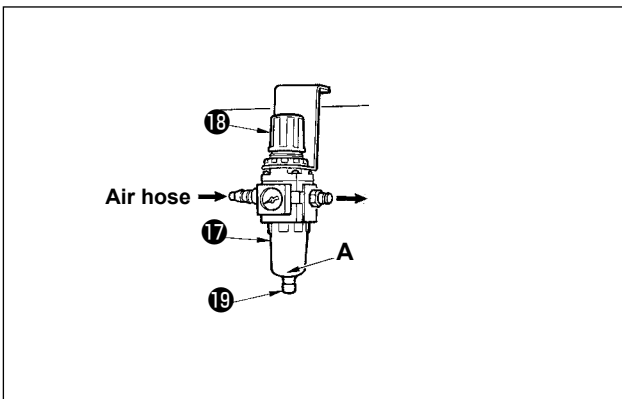
- 1) Adjusting the position of the binder  
Perform the adjustment of the position of binder 9 with screws 10.



- 2) Adjusting the open/close amount of the binder  
Adjust the open/close amount of the binder with collar 14.



- 3) Adjusting the speed of open/close of the binder  
The speed of open/close of binder 9 can be changed with speed controllers 15 and 16. When you desire to change the opening speed of binder 9, loosen the nut of speed controller 15 located on the machine side and turn the adjustment screw. When you desire to change the closing speed of binder 9, loosen the nut of speed controller 16 located on the operator side and turn the adjustment screw. After the adjustment, tighten the nut of the speed controller.



- 4) Adjusting the air regulator
  1. Insert the air hose to air regulator 17.
  2. Use the air pressure at 0.4 to 0.5 MPa (4 to 5 kgf/cm<sup>2</sup>).
  3. Draw up regulator knob 18, turn knob 18 and adjust the pointer to 0.4 to 0.5 MPa to adjust the air pressure.
  4. After the adjustment, press downward regulator knob 18.
  5. When drainage is collected at section A of regulator 17 during using, press drain cock 19 to discharge the drainage.

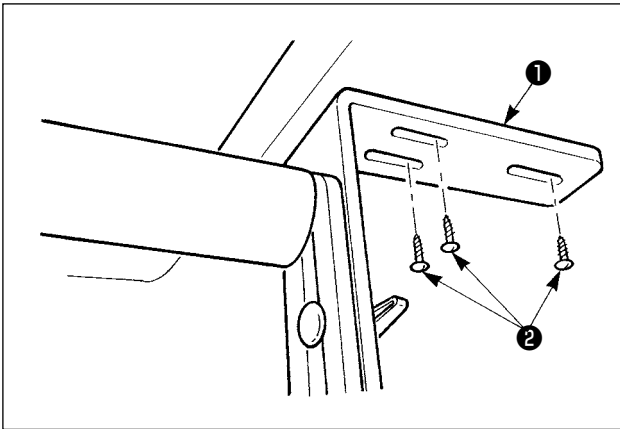
## IV. WITH REGARD TO THE ACCESSORIES (TENSION ROLLER)

### 1. Installing procedure



**WARNING :**

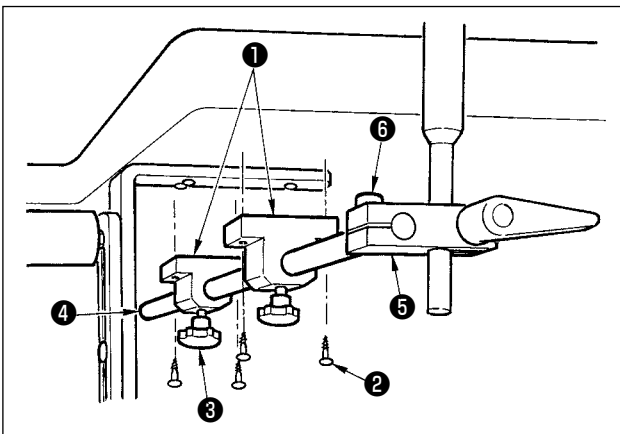
To protect against possible personal injury due to abrupt start of the machine, be sure to start the following work after turning the power off and ascertaining that the motor is at rest.



- 1) Installing the bottom roller of the tension roller  
Install bottom roller plate **1** with three wood screws **2**.



For the installing position of the bottom roller plate, refer to the drawing of the table.

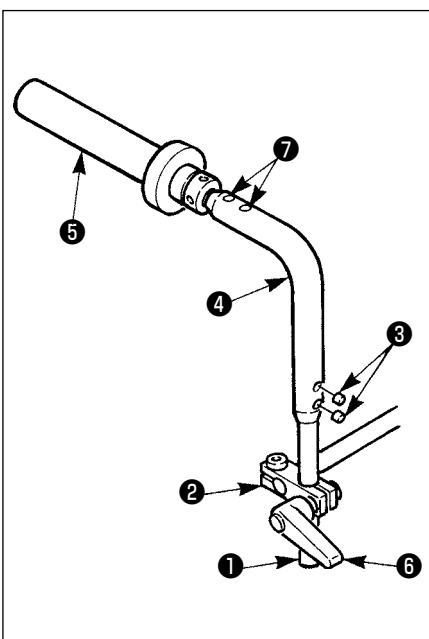


- 2) Installing the slide shaft under the table  
1. Fix slide bases **1** with wood screws **2** (2 pcs. each) respectively.



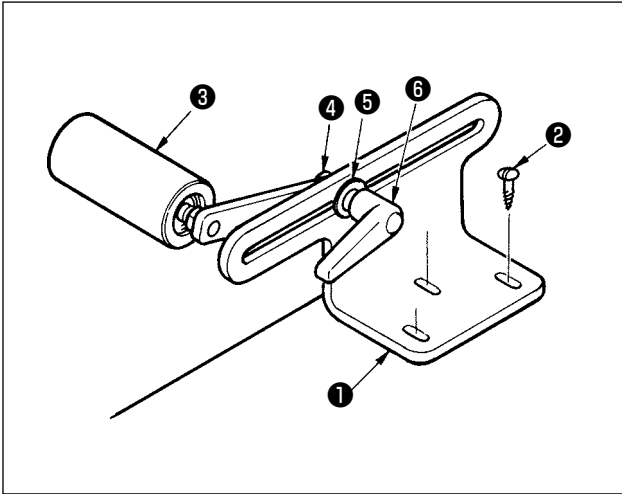
For the installing position of the slide base, refer to the drawing of the table.

2. Loosen knobs **3**, enter slide shaft **4** to slide bases **1**, adjust the slide bases so that the slide shaft moves smoothly, and tighten wood screws **2**.  
Place downward the flat plane of the slide shaft so that the knobs can be fixed.
3. Enter block asm. **5** to slide shaft **4**, and tighten screw **6** (M8).



### 3) Installing the front roller

1. Enter front roller vertical shaft **1** to block asm. **2**, and temporarily tighten clamp lever **6**.
2. Enter bracket **4** to front roller vertical shaft **1**, and fix it with screws **3** (M6). At this time, adjust the flat plane of front roller vertical shaft **1** to screws **3**.
3. Enter front roller asm. **5** to bracket **4**, and fix it with screws **7** (M6).
4. Adjust the direction of front roller asm. **5** so that it is parallel to the sewing machine, and tighten clamp lever **6**.



4) Installing the rear roller

1. Fix rear roller plate base ① with three wood screws ②.



For the installing position of the rear roller plate base, refer to the drawing of the table.

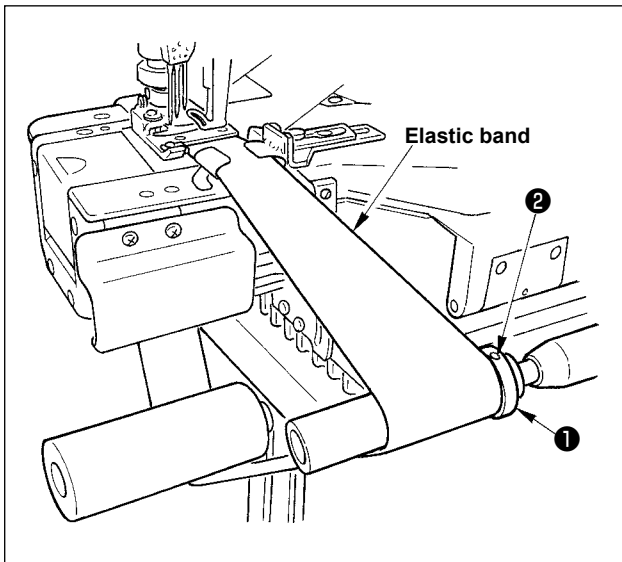
2. Install rear roller asm. ③ to rear roller plate base ① with screw ④ (M8), washer ⑤ and clamp lever ⑥.

## 2. Adjustment procedure



**WARNING :**

To protect against possible personal injury due to abrupt start of the machine, be sure to start the following work after turning the power off and ascertaining that the motor is at rest.



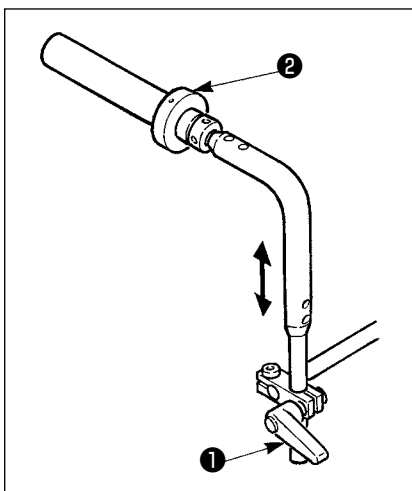
1) Adjusting the lateral position

Adjust the position so that the right-hand end of the elastic band fits collar ① of the front roller when placing the elastic band straight to the front roller.

1. Loosen screw ②, adjust collar ① to the position of the right-hand end of the elastic band, and tighten the screw.

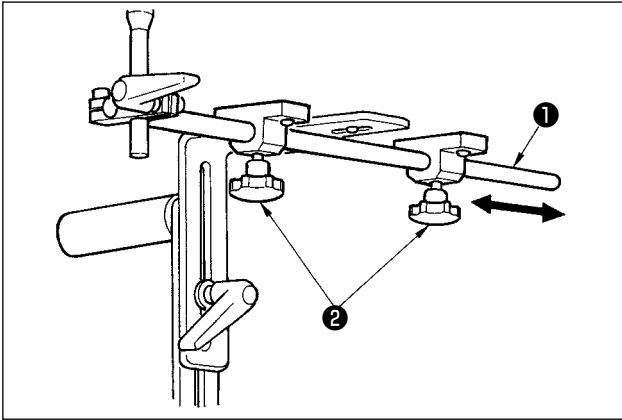


Do not excessively tighten screw ②. Deformation of the collar will be caused.



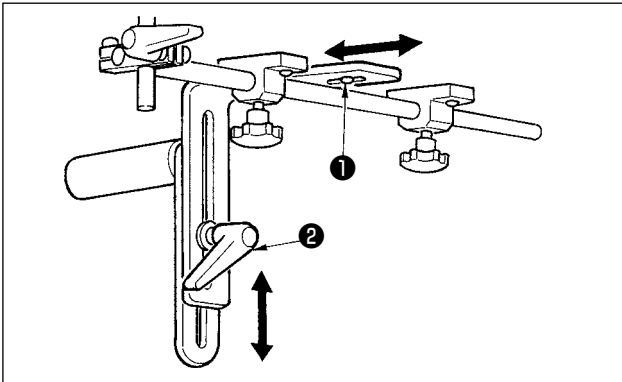
2) Adjusting the vertical position

Loosen clamp lever ①, and adjust the height of front roller ②. Adjust the position in accordance with the length of the elastic band, and tighten clamp lever ①.



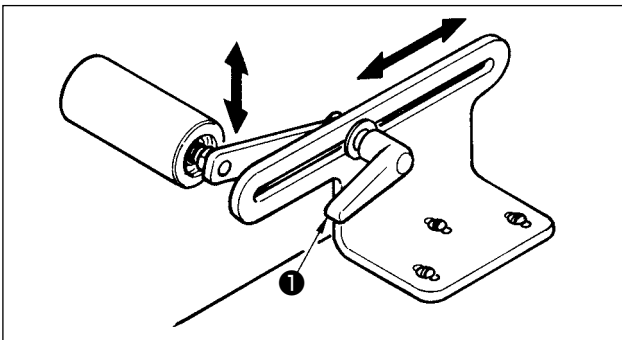
### 3) Adjusting the longitudinal position

1. Loosen knobs **2** of slide shaft **1**, and adjust the longitudinal position.
2. After adjusting the position, tighten knobs **2**.



### 4) Adjusting the position of the bottom roller

1. Adjusting the lateral position  
Loosen three screws **1**, adjust the bottom roller so that the elastic band is put straight, and tighten three screws **1**.
2. Adjusting the vertical position  
Loosen clamp lever **2**, adjust the position so that the elastic band is appropriately in accordance with the length of it, and tighten clamp lever **2**.

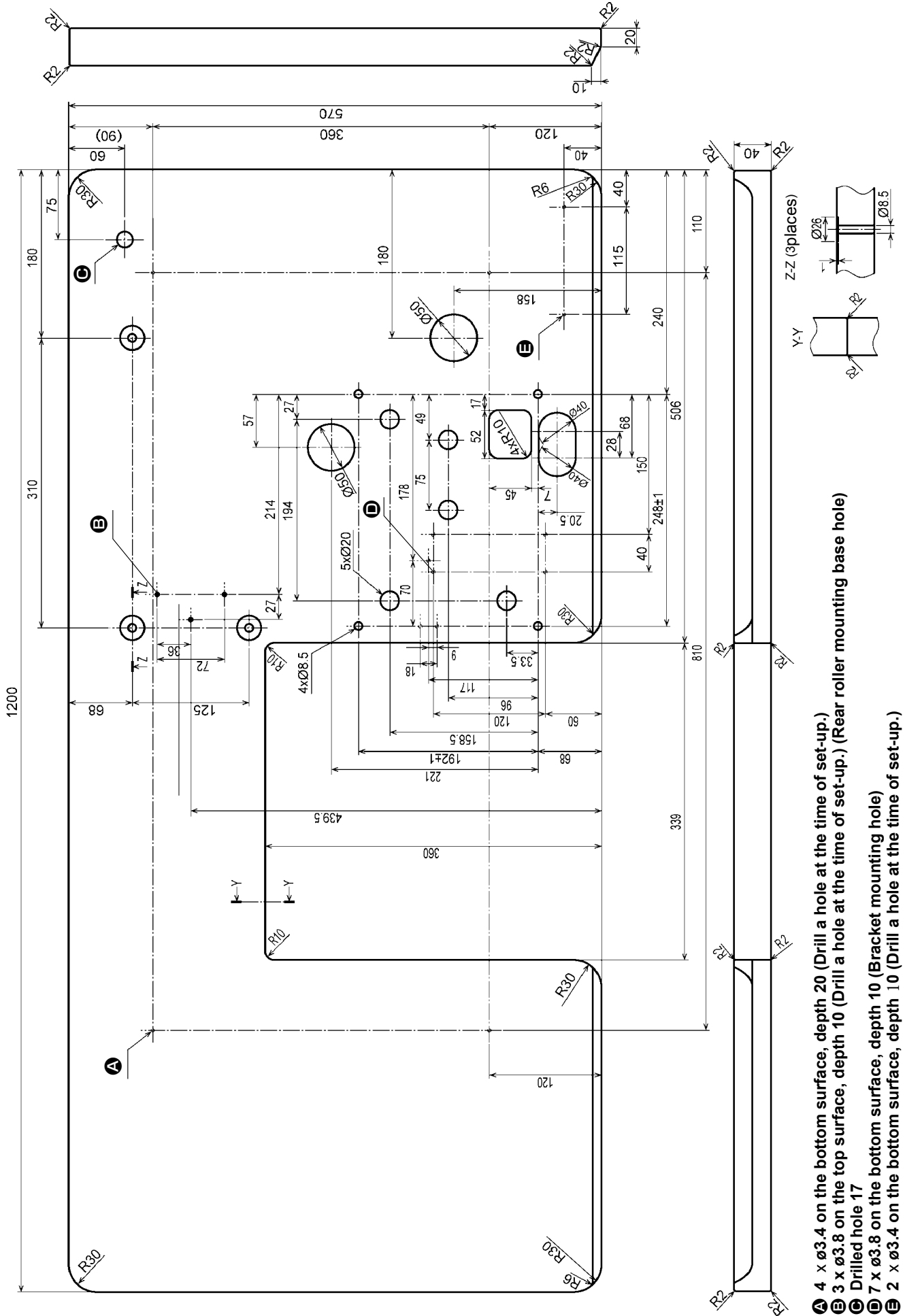


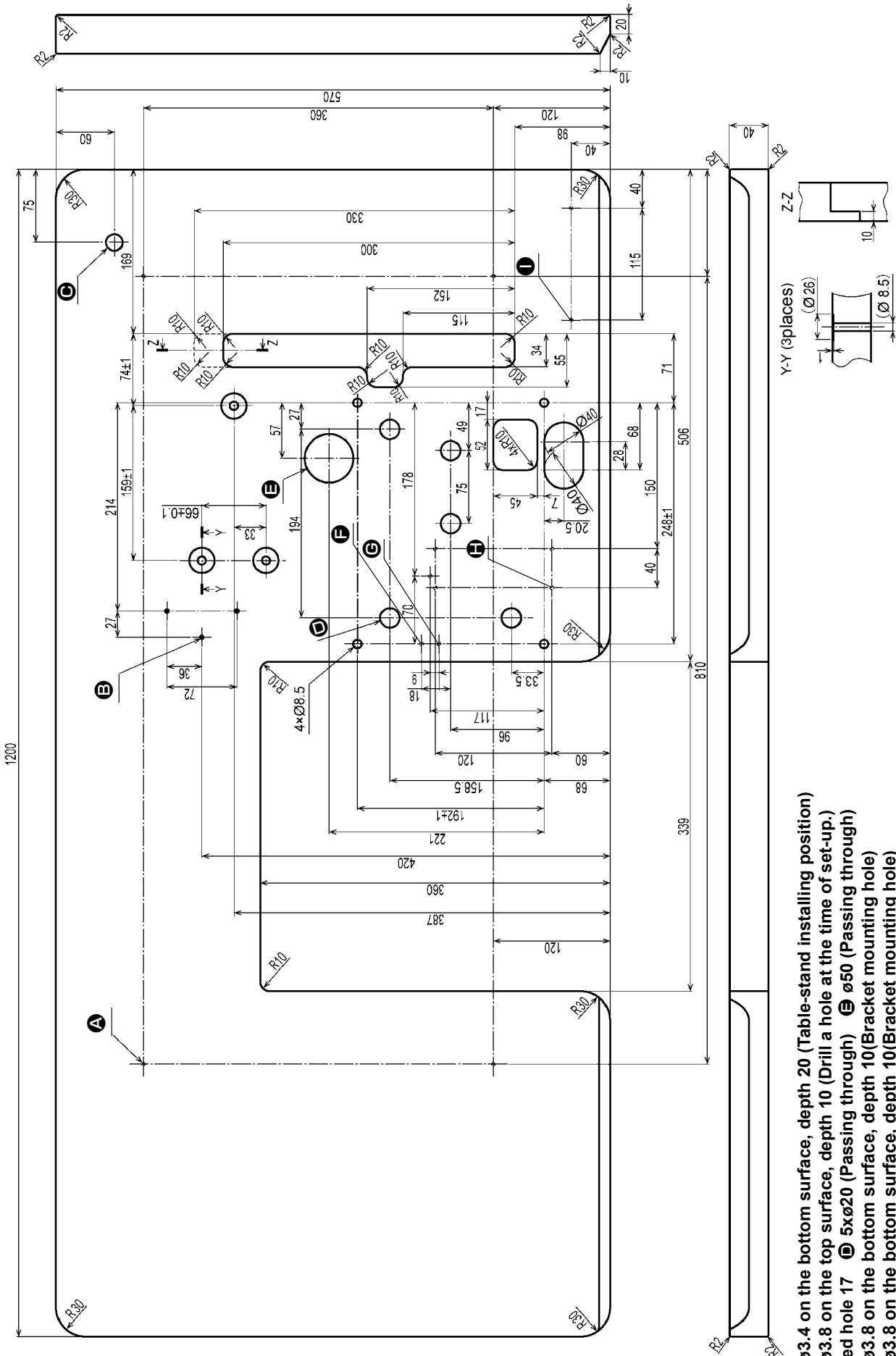
### 5) Adjusting the position of the rear roller

1. Adjusting the longitudinal and vertical positions  
Loosen clamp lever **1**, adjust the position so that the elastic band is appropriately tense in accordance with the length of it, and tighten clamp lever **1**.

# V. DRAWING OF THE TABLE

70003387 MF-7900-E11/E22/E23 For the direct-driven machine head





- A** 4 x  $\phi 3.4$  on the bottom surface, depth 20 (Table-stand installing position)
- B** 4 x  $\phi 3.8$  on the top surface, depth 10 (Drill a hole at the time of set-up.)
- C** Drilled hole 17  $\phi 5 \times \phi 20$  (Passing through) **E**  $\phi 50$  (Passing through)
- F** 3 x  $\phi 3.8$  on the bottom surface, depth 10 (Bracket mounting hole)
- G** 2 x  $\phi 3.8$  on the bottom surface, depth 10 (Bracket mounting hole)
- H** 2 x  $\phi 3.8$  on the bottom surface, depth 10 (Bracket mounting hole)
- I** 2 x  $\phi 3.8$  on the bottom surface, depth 10 (Pushbutton switch mounting position)