

# ***PARTS LIST***

## **TC16 PARTS LIST**

下記 URL (PARTS Website/PC サイト) より、便利な検索機能のついた Web Parts Book をご利用頂けます。  
ご利用には会員登録が必要です。(無料)

<https://juki.aftama.com/JUKI/JA>

You can use a Web Parts Book with a convenient search function from the URLs (PARTS Website/PC-site)  
below. To use the PARTS Website, free membership registration is required.

<https://juki.aftama.com/JUKI/EN>

## HOW TO MAKE USE OF THIS PARTS LIST

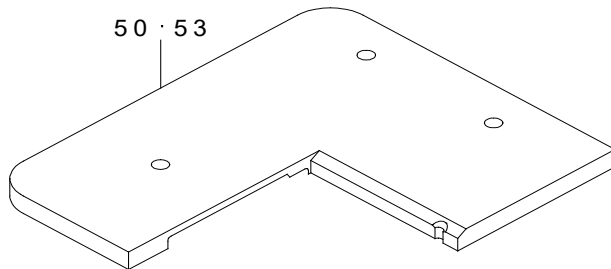
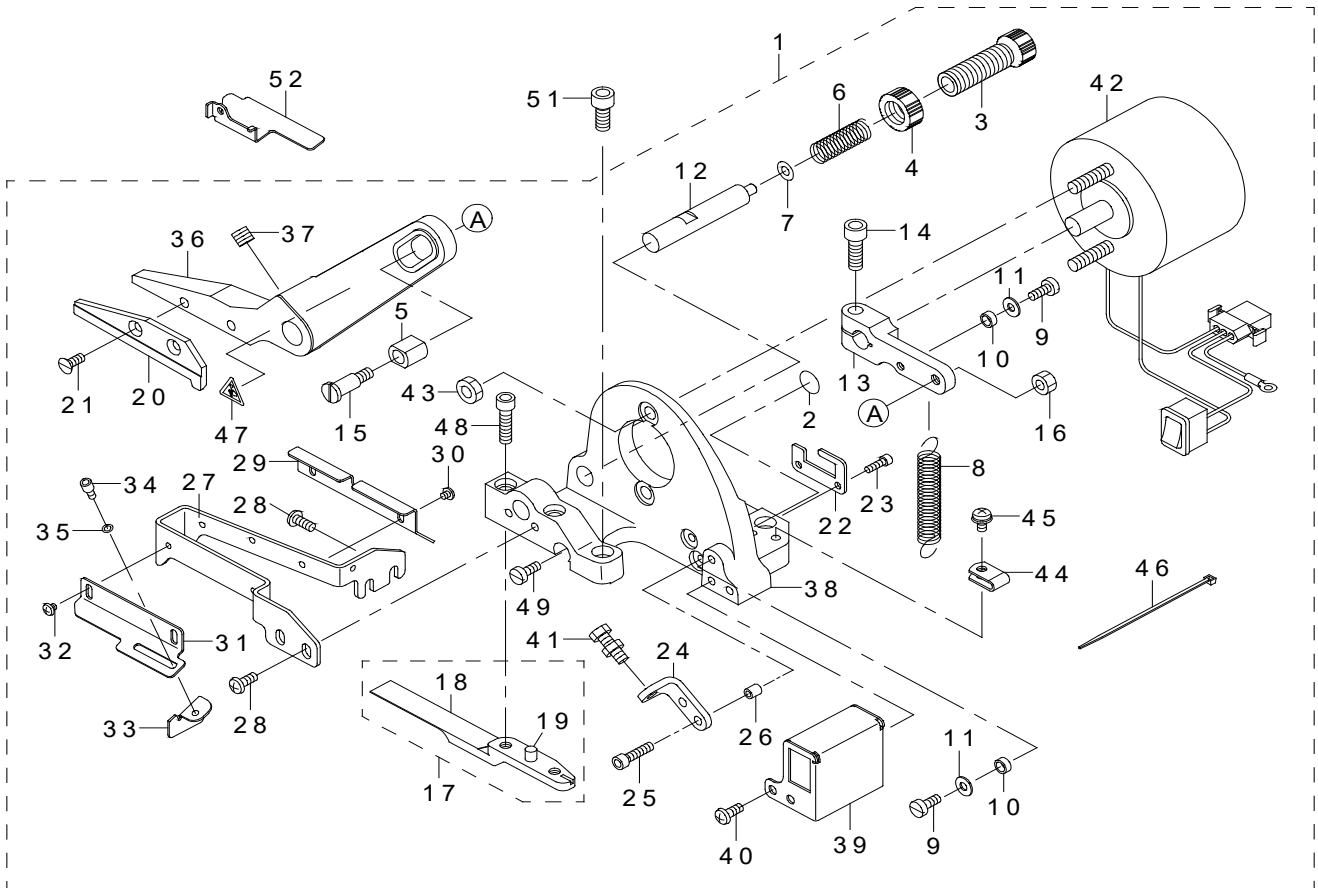
- 1.As to "#01" and "#02" refer to the "Note" given at the bottom of the respective pages.
- 2.Codes on the "Qty" column
  - Each numeral indicates the number of parts required.
  - "0.1" and "2.5" indicate the length (in meters) of the respective parts.
- 3.Parentheses mean that the corresponding part is a subpart that constructs an assembly part.
- 4.Dotted lines on the Figures indicate assembly parts.

# CONTENTS

1. TC16 (1) .....	1
2. TC16 (2) .....	3
NUMERICAL INDEX OF PARTS .....	5

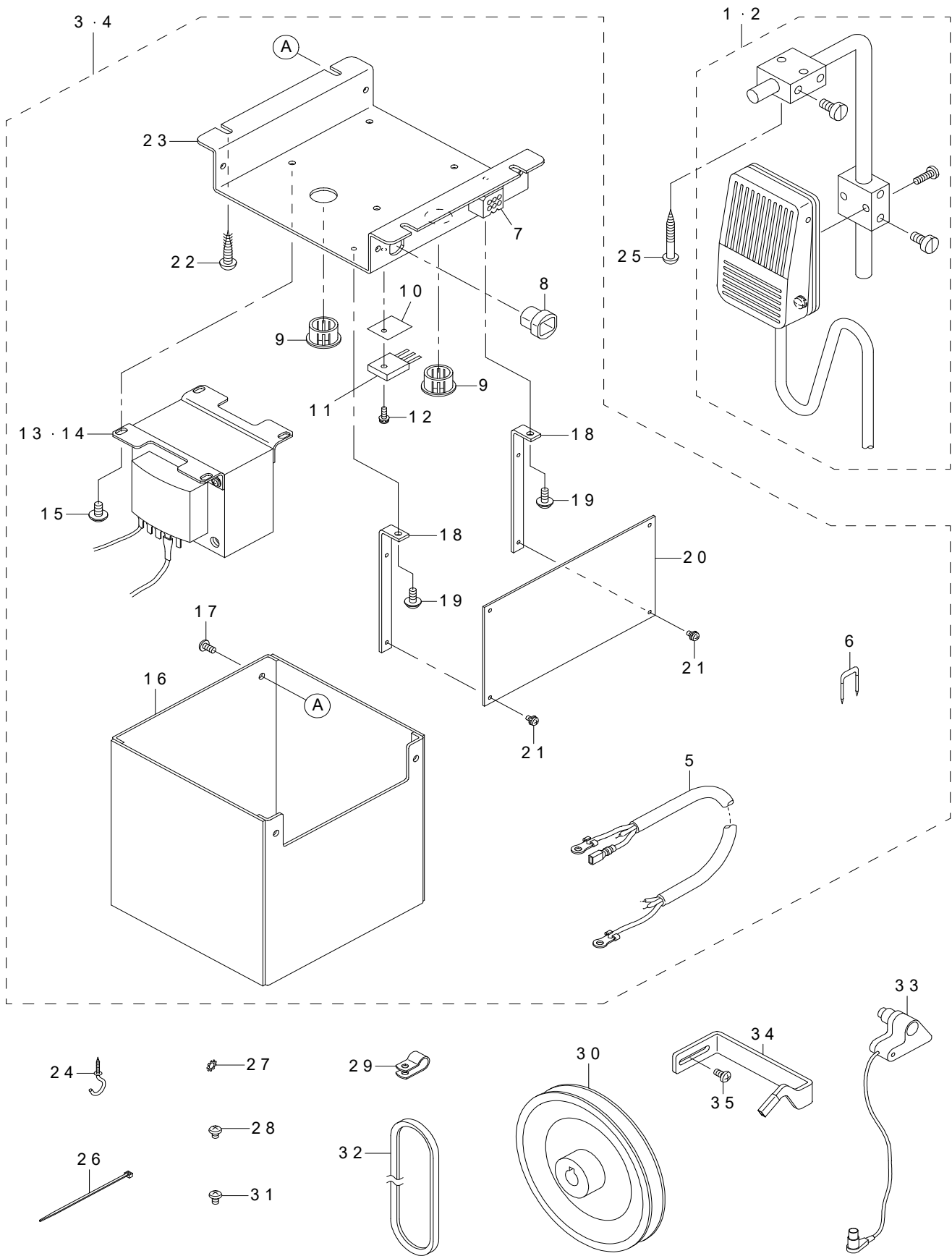
1. TC16 (1)

	PARTS No.		NOTE
	FOR C11	FOR E11	
TC16A	700-02754	700-02757	WITH CONTROL BOX (FOR 220~440V)
TC16B	700-02755	700-02758	WITH CONTROL BOX (FOR 100~240V)
TC16C	700-02756	700-02759	SEAVO MOTOR TYPE (FOR SC921)



REF.NO	NOTE	PART NO	DESCRIPTION	Qty
1		400-43920	MG TAPE CUTTER ASM.	1
2		229-01805	GROUND MARK	(1)
3		400-11179	PRESSER SPRING REGULATOR	(1)
4		400-11180	NUT	(1)
5		400-19878	TC SLIDE BLOCK	(1)
6		400-19879	TC SPRING A	(1)
7		WP-0480856-SP	WASHER 4.8X8.4X0.8	(1)
8		400-19880	TC SPRING B	(1)
9		SM-6041050-TP	SCREW M4 L=10	(2)
10		B1650-210-000	DRIVING LINK ROLLER.	(2)
11		140-30100	WASHER	(2)
12		400-19881	TC SHAFT	(1)
13		400-19882	TC SOLENOID LEVER	(1)
14		SM-6061802-TP	SCREW M6 L=18	(1)
15		SD-0701206-TP	SHOULDER SCREW D=7 H=12	(1)
16		NM-6050001-SC	NUT M5	(1)
17		400-20224	TC FIXED KNIFE ASM	(1)
18		400-19883	TC FIXED KNIFE	(1)
19		122-19705	PIN	(1)
20		400-19884	TC MOVING KNIFE	(1)
21		SM-1041000-SP	SCREW M4 L=10	(2)
22		400-44022	TC CONNECTOR BKT	(1)
23		SM-6031002-TP	HEXAGONAL BOLT M3 X 10	(2)
24		400-19886	TC STOPPER BKT	(1)
25		SM-6041602-TP	SCREW M4X0.7 L=16	(2)
26		B3028-450-000	ROLLER	(2)
27		400-69670	TC COVER A	(1)
28		SM-5041055-SN	SCREW M4X10	(4)
29		400-69671	TC COVER B	(1)
30		SM-5030355-SE	SCREW	(2)
31		400-19889	TC GUIDE A	(1)
32		SM-5030355-SE	SCREW	(2)
33		400-19890	TC GUIDE B	(1)
34		SM-6030502-TP	BOLT M3X5	(1)
35		WP-0320500-SC	WASHER M3	(1)
36		400-19891	TC LEVER	(1)
37		SM-8060812-TP	SCREW M6 L=8	(1)
38		400-19892	TC BASE	(1)
39		400-19894	TC SWITCH BOX	(1)
40		SM-5041055-SN	SCREW M4X10	(2)
41		400-40451	TC STOPPER BOLT ASM.	(1)
42		400-42219	TC SOLENOID ASSY	(1)
43		NM-6060001-SC	NUT M6	(2)
44		HX-0015000-00	CLIP	(1)
45		SM-5041055-SN	SCREW M4X10	(2)
46		EA-9500B01-00	CABLE BAND	(1)
47		CM-3002000-01	ATTENTION SEAL	(2)
48		SM-6052002-TP	SCREW M5 L=20	(2)
49		SM-6041050-TP	SCREW	(1)
50	#02	700-03999	CLOTH_PLATE_LEFT_TC	1
51		SM-6051402-TP	SCREW M5X0.8 L=14	2
52		400-19893	TC TAPE GUIDE	1
53	#01	400-19896	TC CLOTH PLATE	1
		NOTE	#01....FOR C 1 1	
			#02....FOR E 1 1	

2. TC16 (2)



REF.NO	NOTE	PART NO	DESCRIPTION	Qty
1	#03	400-42221	TC SWITCH B ASSY	1
2	#04	400-49440	TC SWITCH C ASSY	1
3	#01	400-39579	T006 CONTROL BOX A ASSY	1
4	#02	400-39580	T006 CONTROL BOX B ASSY	1
5		MAT-006050A0	POWER SOURCE CORD ASM.	(1)
6		MAO-11532000	CORD STAPLE	(4)
7		400-39585	CONNECTOR ASSY	(1)
8		HX-0002100-00	CORD BUSHING	(1)
9		HX-0022700-00	ONE TOUCH BUSH	(2)
10		HX-0019700-00	INSULATE PLATE	(1)
11		400-39584	TRANSISTOR ASSY	(1)
12		SL-4031081-SC	SCREW M3 X 10	(1)
13	#01	400-39583	TRANSFORMER A ASSY	(1)
14	#02	400-39588	TRANSFORMER B ASSY	(1)
15		SL-4040891-SC	SCREW	(4)
16		MAT-00616000	CONTROL UNIT COVER	(1)
17		SL-4040891-SC	SCREW M4 L=8	(4)
18		400-39587	MCU PCB SUPPORT PLATE	(2)
19		SL-4030881-SC	SCREW	(2)
20		400-39573	MCU PCB ASSY	(1)
21		SL-4030681-SC	SCREW M3 L=6	(4)
22		SK-3482500-SC	WOOD SCREW D=4.8 L=25	(4)
23		400-39586	CONTROL BOX MOUNTING BASE	(1)
24		D2113-555-B00	CORD SET HOOK, B	2
25		SK-3514000-SC	WOOD SCREW D=5.1 L=40	2
26		EA-9500B01-00	CABLE BAND	2
27	#04	WT-0430002-KN	WASHER M4	1
28	#04	SM-4040501-SN	SCREW M4X0.7 L=5	1
29	#04	HX-0015000-0C	CABLE CLIP	1
30	#04	MTS-P0115000-A	MOTOR PULLEY	1
31	#04	SM-4040655-SP	SCREW M4 L=6	1
32	#04	MTJ-VM003600	V-BELT, 36 INCH	1
33	#04	400-26920	SYNCHRONIZER ASM.	1
34	#04	400-82313	STOPPER ASM	1
35	#04	SM-4040855-SP	SCREW	2

NOTE

#01....FOR TC16A(220 ~ 440V)  
#02....FOR TC16B(100 ~ 240V)  
#03....FOR TC16A,TC16B  
#04....FOR TC16C

NUMERICAL INDEX OF PARTS

PART NO	PAGE	REF NO	PART NO	PAGE	REF NO	PART NO	PAGE	REF NO	PART NO	PAGE	REF NO
B1650-210-000	2	10	400-19893	2	52						
B3028-450-000	2	26	400-19894	2	39						
			400-19896	2	53						
CM-3002000-01	2	47	400-20224	2	17						
			400-26920	4	33						
D2113-555-B00	4	24	400-39573	4	20						
			400-39579	4	3						
EA-9500B01-00	2	46	400-39580	4	4						
EA-9500B01-00	4	26	400-39583	4	13						
			400-39584	4	11						
HX-0002100-00	4	8	400-39585	4	7						
HX-0015000-0C	4	29	400-39586	4	23						
HX-0015000-00	2	44	400-39587	4	18						
HX-0019700-00	4	10	400-39588	4	14						
HX-0022700-00	4	9	400-40451	2	41						
			400-42219	2	42						
MAO-11532000	4	6	400-42221	4	1						
MAT-006050A0	4	5	400-43920	2	1						
MAT-00616000	4	16	400-44022	2	22						
MTJ-VM003600	4	32	400-49440	4	2						
MTS-P0115000-A	4	30	400-69670	2	27						
			400-69671	2	29						
NM-6050001-SC	2	16	400-82313	4	34						
NM-6060001-SC	2	43									
			700-03999	2	50						
SD-0701206-TP	2	15									
SK-3482500-SC	4	22									
SK-3514000-SC	4	25									
SL-4030681-SC	4	21									
SL-4030881-SC	4	19									
SL-4031081-SC	4	12									
SL-4040891-SC	4	15									
SL-4040891-SC	4	17									
SM-1041000-SP	2	21									
SM-4040501-SN	4	28									
SM-4040655-SP	4	31									
SM-4040855-SP	4	35									
SM-5030355-SE	2	30									
SM-5030355-SE	2	32									
SM-5041055-SN	2	28									
SM-5041055-SN	2	40									
SM-5041055-SN	2	45									
SM-6030502-TP	2	34									
SM-6031002-TP	2	23									
SM-6041050-TP	2	9									
SM-6041050-TP	2	49									
SM-6041602-TP	2	25									
SM-6051402-TP	2	51									
SM-6052002-TP	2	48									
SM-6061802-TP	2	14									
SM-8060812-TP	2	37									
WP-0320500-SC	2	35									
WP-0480856-SP	2	7									
WT-0430002-KN	4	27									
122-19705	2	19									
140-30100	2	11									
229-01805	2	2									
400-11179	2	3									
400-11180	2	4									
400-19878	2	5									
400-19879	2	6									
400-19880	2	8									
400-19881	2	12									
400-19882	2	13									
400-19883	2	18									
400-19884	2	20									
400-19886	2	24									
400-19889	2	31									
400-19890	2	33									
400-19891	2	36									
400-19892	2	38									