

***ENGLISH***

**MF-7500-E11  
INSTRUCTION MANUAL**

# CONTENTS

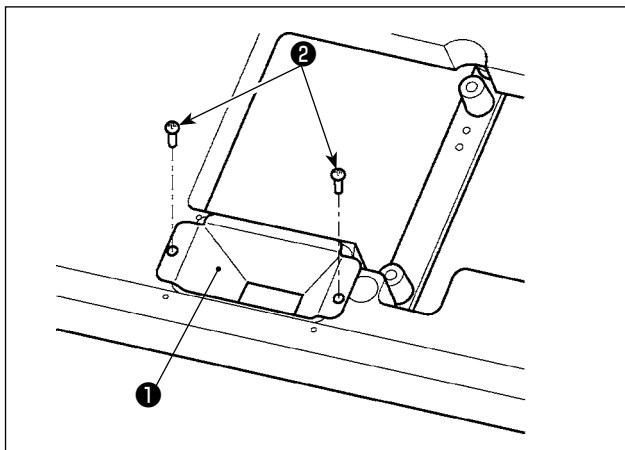
1. SPECIFICATIONS.....	1
2. DRAWING OF TABLE (SEMI-SUBMERGED TYPE) .....	2
3. INSTALLATION OF THE DUST CHUTE .....	3
4. OPENING AND CLOSING THE COVER.....	4
5. ADJUSTMENT PROCEDURE OF THE KNIFE PRESSURE .....	4
6. ADJUSTMENT PROCEDURE OF KNIFE CUTTING POSITION.....	5
7. ADJUSTMENT PROCEDURE OF ENGAGEMENT AMOUNT OF KNIVES .....	5
8. REPLACEMENT PROCEDURE OF MOVING KNIFE AND FIXED KNIFE.....	6
9. OILING .....	6
10. ADJUSTMENT PROCEDURE OF FRONT-UP AMOUNT OF THE PRESSER FOOT .....	7
11. ADJUSTMENT PROCEDURE OF THE POSITION OF THE TAPE GUIDE .....	7
12. ADJUSTMENT PROCEDURE OF THE WIDTH OF THE TAPE GUIDE .....	7
13. ADJUSTMENT PROCEDURE OF THE FABRIC PRESSER .....	7
14. ADJUSTING THE ANGLE OF MESH OF THE KNIFE .....	8

## 1. SPECIFICATIONS

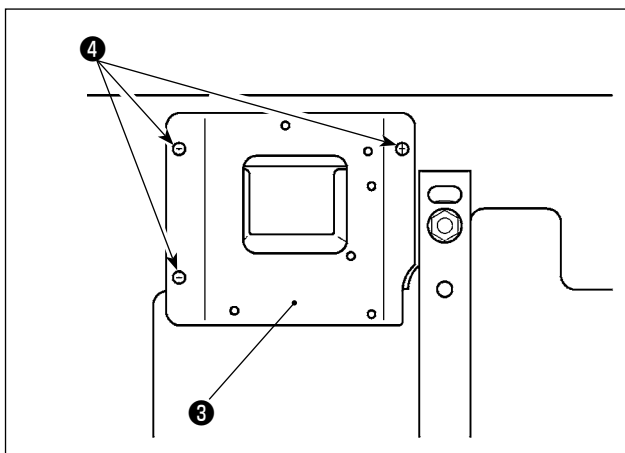
Model	MF-7500-E11	
Class name	With fabric undertrimmer for elastic tape attaching	
Sewing speed	Max. 6,000 sti/min (5,000 sti/min with MD) (at the time of intermittent operation) Speed of stitch at the delivery. 4,000 sti/min (at the time of intermittent operation)	
Needle gauge	3-needle	5.6 mm, 6.4 mm
	2-needle	4.0 mm
Differential feed ratio	1 : 0.7 to 1 : 1	
Stitch length	0.9 to 3.6 mm (Adjustable up to 4.0 mm)	
Noise	- Equivalent continuous emission sound pressure level ( $L_{pA}$ ) at the workstation : A-weighted value of 76.5 dB; (Includes $K_{pA} = 2.5$ dB); according to ISO 10821- C.6.2 -ISO 11204 GR2 at 4,000 sti/min.	



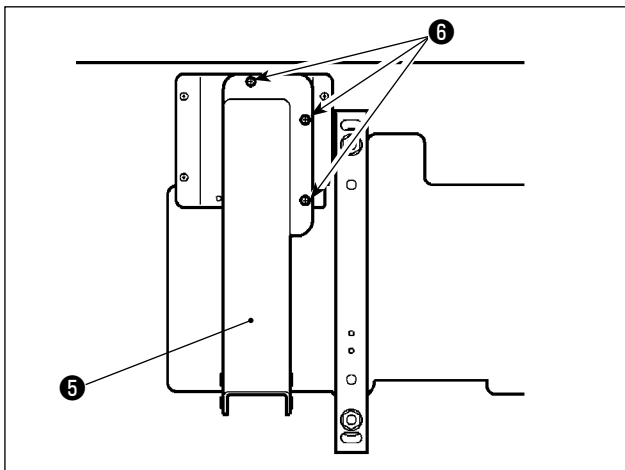
### 3.INSTALLATION OF THE DUST CHUTE



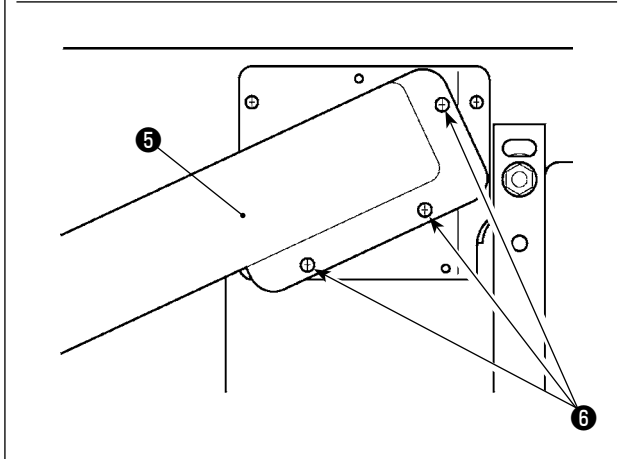
1) Install dust chute **1** with two wood screws **2**.

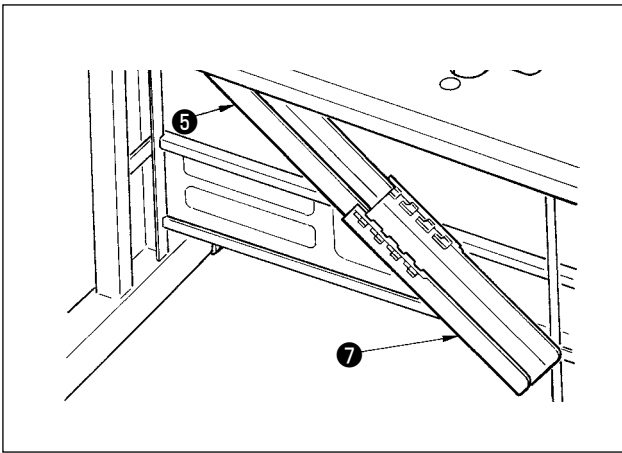


2) Install dust chute bracket **3** with three wood screws **4**.



3) Install dust chute A **5** with three screws **6**.  
Dust chute A can be installed in two different orientations.





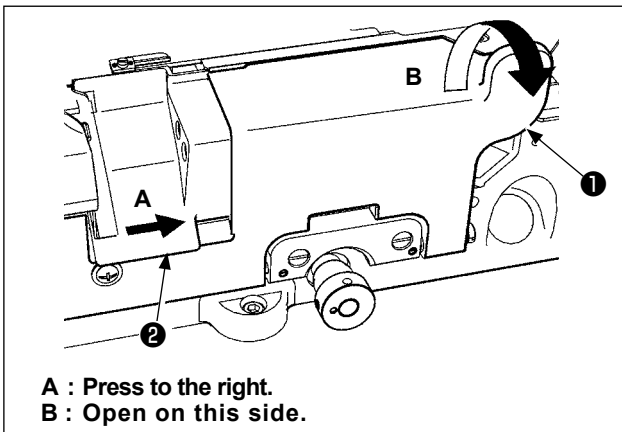
- 4) Put dust chute B ⑦ on the claws of dust chute A ⑤ to fix it.

#### 4. OPENING AND CLOSING THE COVER



**WARNING :**

To protect against possible personal injury due to abrupt start of the machine, be sure to start the following work after turning the power off and ascertaining that the motor is at rest.



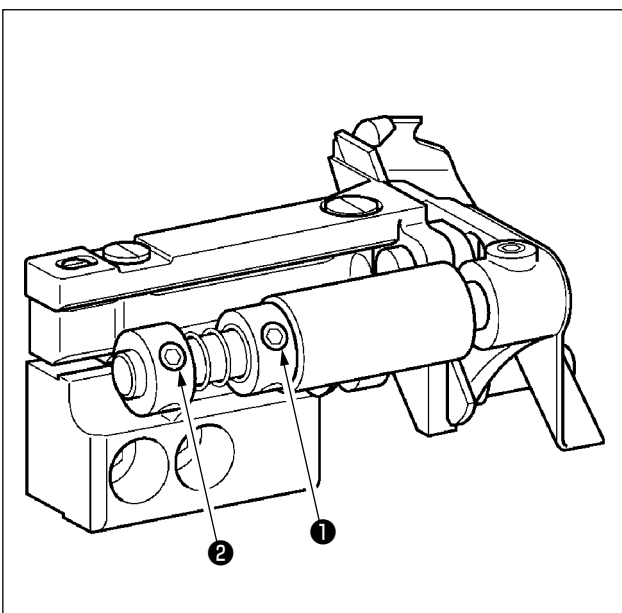
When opening and closing main cover ①, open it on this side with slip cover ② pressed to the right.

#### 5. ADJUSTMENT PROCEDURE OF THE KNIFE PRESSURE



**WARNING :**

To protect against possible personal injury due to abrupt start of the machine, be sure to start the following work after turning the power off and ascertaining that the motor is at rest.



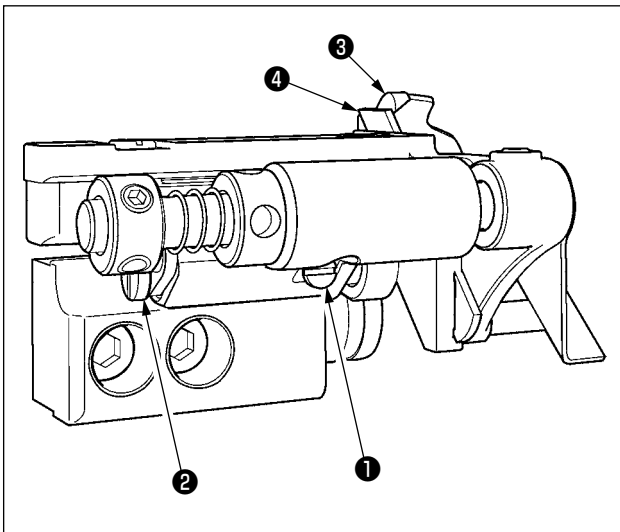
Make the engagement pressure of moving knife and fixed knife as low as possible within the range of smooth cutting of fabric. Loosen setscrew ① of thrust collar A and setscrew ② of thrust collar B in the written order. Shift thrust collar B to the right and tighten setscrew ② to increase the knife pressure. Once the desired knife pressure is achieved, tighten setscrew ①.

## 6.AJUSTMENT PROCEDURE OF KNIFE CUTTING POSITION



### WARNING :

To protect against possible personal injury due to abrupt start of the machine, be sure to start the following work after turning the power off and ascertaining that the motor is at rest.



Adjust the distance between the right-hand needle and cutting position as described below.

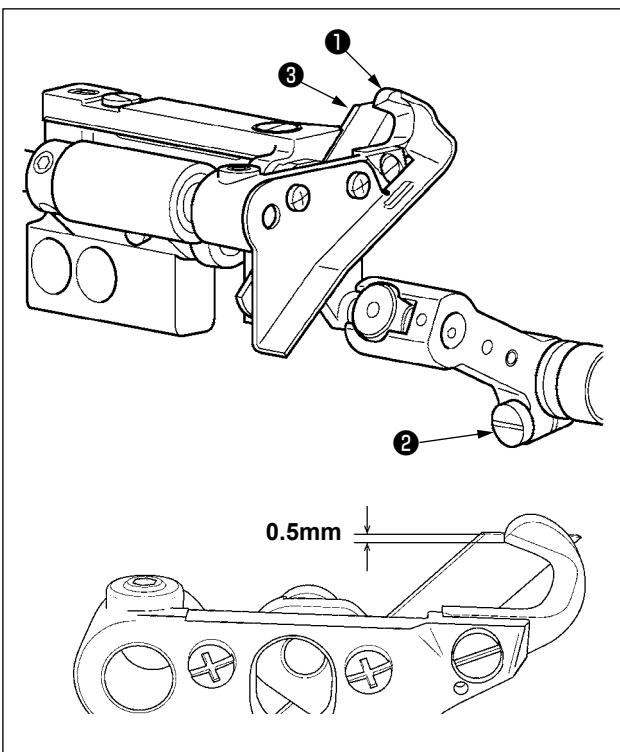
- 1) Loosen setscrew **1** , turn adjustment screw **2** , and laterally adjust moving knife **3** and fixed knife **4** .  
**3** and **4** move to the left when adjustment screw **2** is turned clockwise, and to the right when it is turned counterclockwise.
- 2) After the adjustment, tighten setscrew **1** .
- 3) After the adjustment of the knife width, readjust the spring pressure.

## 7.AJUSTMENT PROCEDURE OF ENGAGEMENT AMOUNT OF KNIVES



### WARNING :

To protect against possible personal injury due to abrupt start of the machine, be sure to start the following work after turning the power off and ascertaining that the motor is at rest.



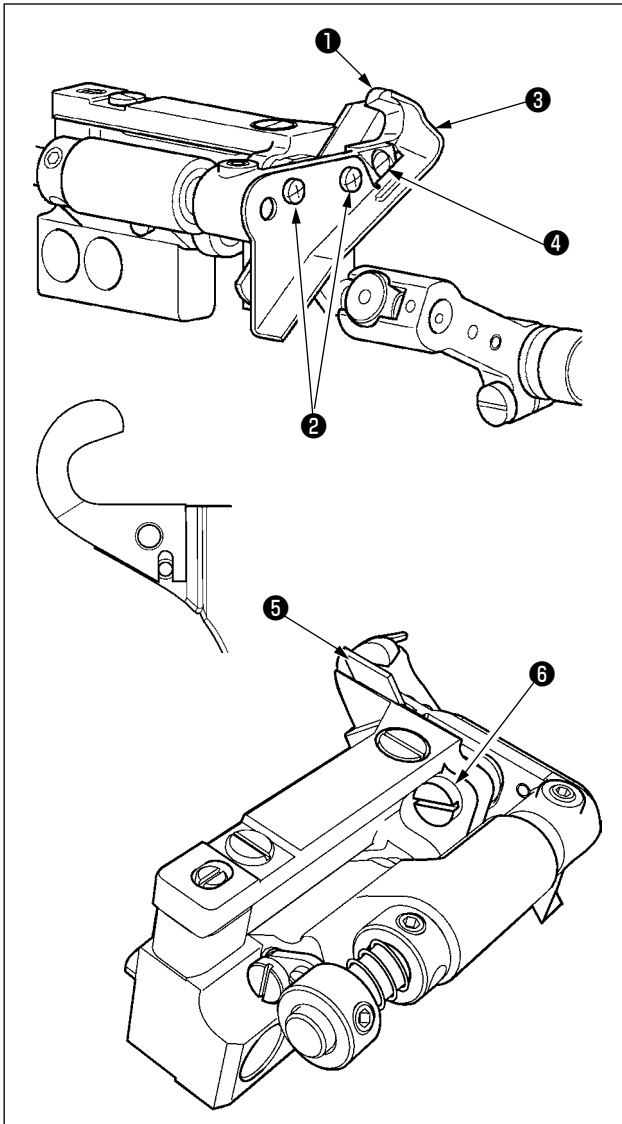
- 1) Loosen setscrew **2** at the position where moving knife **1** is fully lowered and make a state that moving knife **1** can be moved up and down.
- 2) Adjust the engagement amount of moving knife **1** and fixed knife **3** to approximately 0.5 mm from the top end of moving knife, and tighten setscrew **2** .

## 8.REPLACEMENT PROCEDURE OF MOVING KNIFE AND FIXED KNIFE



### WARNING :

To protect against possible personal injury due to abrupt start of the machine, be sure to start the following work after turning the power off and ascertaining that the motor is at rest.



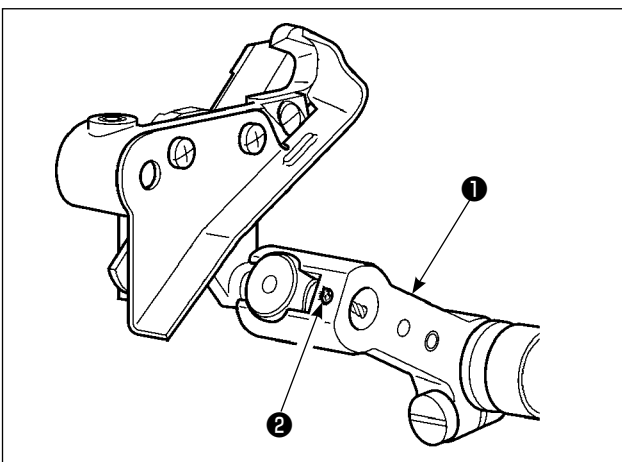
When replacing moving knife ①, remove screws ② and guard ③. Then remove screw ④ and replace the moving knife. When replacing fixed knife ⑤, loosen screw ⑥ and remove fixed knife ⑤ for replacement.

## 9.OILING



### WARNING :

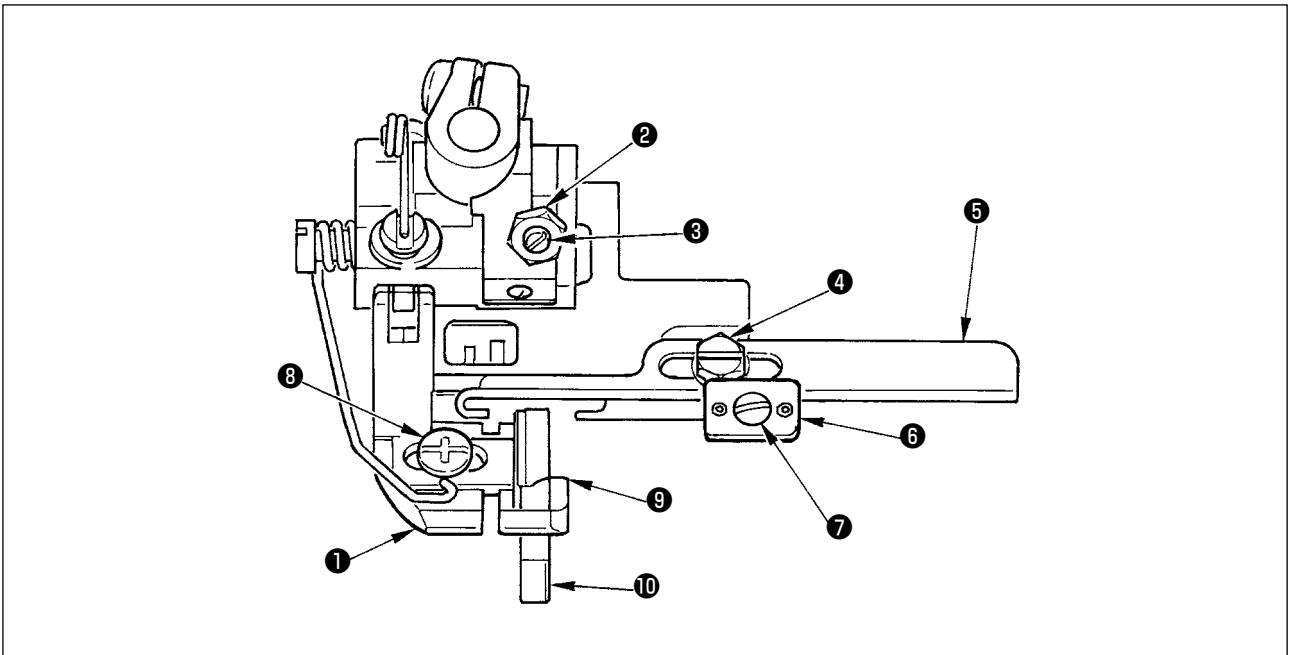
To protect against possible personal injury due to abrupt start of the machine, be sure to start the following work after turning the power off and ascertaining that the motor is at rest.



Be sure to apply a few drops of oil to oil wick ② of moving knife driving link ① before using the sewing machine for the first time after the delivery or using it after an extended period of disuse.

For the lubricating oil, use JUKI GENUINE OIL 18.





## 10.AJUSTMENT PROCEDURE OF FRONT-UP AMOUNT OF THE PRESSER FOOT



**WARNING :**

To protect against possible personal injury due to abrupt start of the machine, be sure to start the following work after turning the power off and ascertaining that the motor is at rest.

When sewing a thick rubber sheet or the like together, fabric can be smoothly fed by raising the front of presser foot ① . Loosen nut ② , turn setscrew ③ to the right (clockwise), and raise the front ① of presser foot for adjustment.

## 11.AJUSTMENT PROCEDURE OF THE POSITION OF THE TAPE GUIDE



**WARNING :**

To protect against possible personal injury due to abrupt start of the machine, be sure to start the following work after turning the power off and ascertaining that the motor is at rest.

Loosen setscrew ④ , and move tape guide base ⑤ to the right and left to adjust the position of the tape.

## 12.AJUSTMENT PROCEDURE OF THE WIDTH OF THE TAPE GUIDE



**WARNING :**

To protect against possible personal injury due to abrupt start of the machine, be sure to start the following work after turning the power off and ascertaining that the motor is at rest.

Loosen setscrew ⑦ move tape guide ⑥ to the right and left to adjust the width of the tape.

## 13.AJUSTMENT PROCEDURE OF THE FABRIC PRESSER



**WARNING :**

To protect against possible personal injury due to abrupt start of the machine, be sure to start the following work after turning the power off and ascertaining that the motor is at rest.

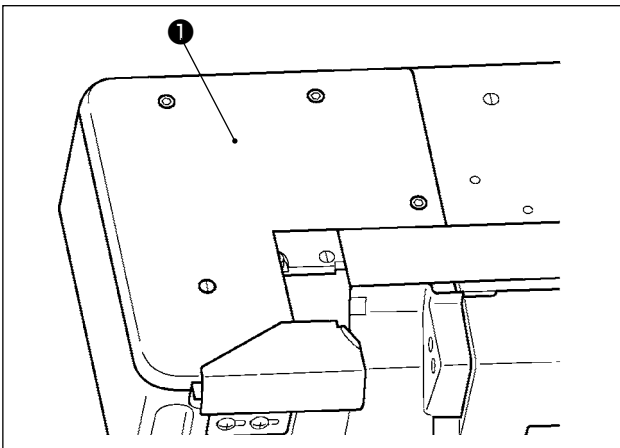
Loosen setscrew ⑧ and adjust the knife cutting position so that moving knife ⑩ enters between knife guide ⑨ .

## 14.ADJUSTING THE ANGLE OF MESH OF THE KNIFE

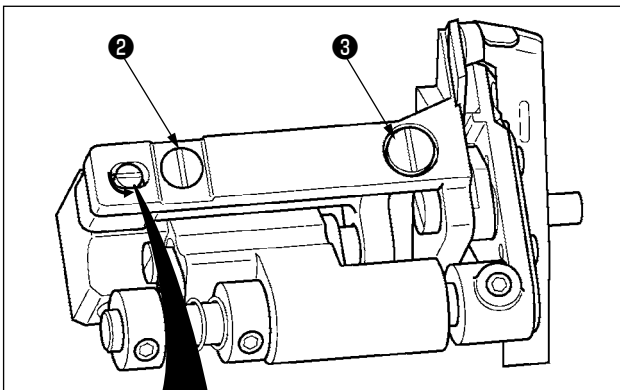


### WARNING :

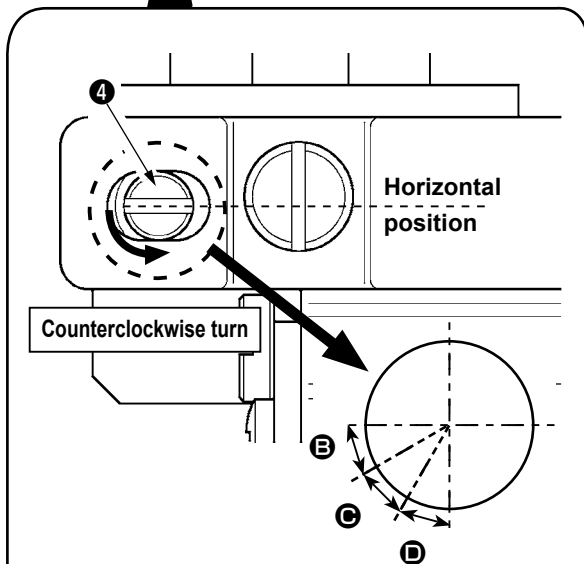
To protect against possible personal injury due to abrupt start of the machine, be sure to start the following work after turning the power off and ascertaining that the motor is at rest.



1) Remove cloth plate, left **1** .



2) Loosen screws **2** and **3** .



3) Adjust the sharpness of the knife by turning eccentric pin **4** counterclockwise according to the sharpness of the knife.

- Caution**
1. The extent of the adjustment of the angle of mesh is until the marker line on the eccentric pin is perpendicularly positioned by turning the pin counterclockwise. If the eccentric pin is turned beyond the above, the angle between the upper knife and the lower knife will increase.
  2. If the depth of engagement is excessively increased, the knife can wear.
  3. Adjust the knife so that it cuts well and the depth of engagement is not excessive.

- B**: Standard adjustment angle  
**C**: Angle adjusted for hard-to-sew materials  
**D**: Angle adjusted when the knife has worn  
 \* If the knife engagement angle is adjusted to **D** from the start, the knife can wear earlier than the case where the angle is adjusted the standard one.

4) After the adjustment, tighten screws **2** and **3** .