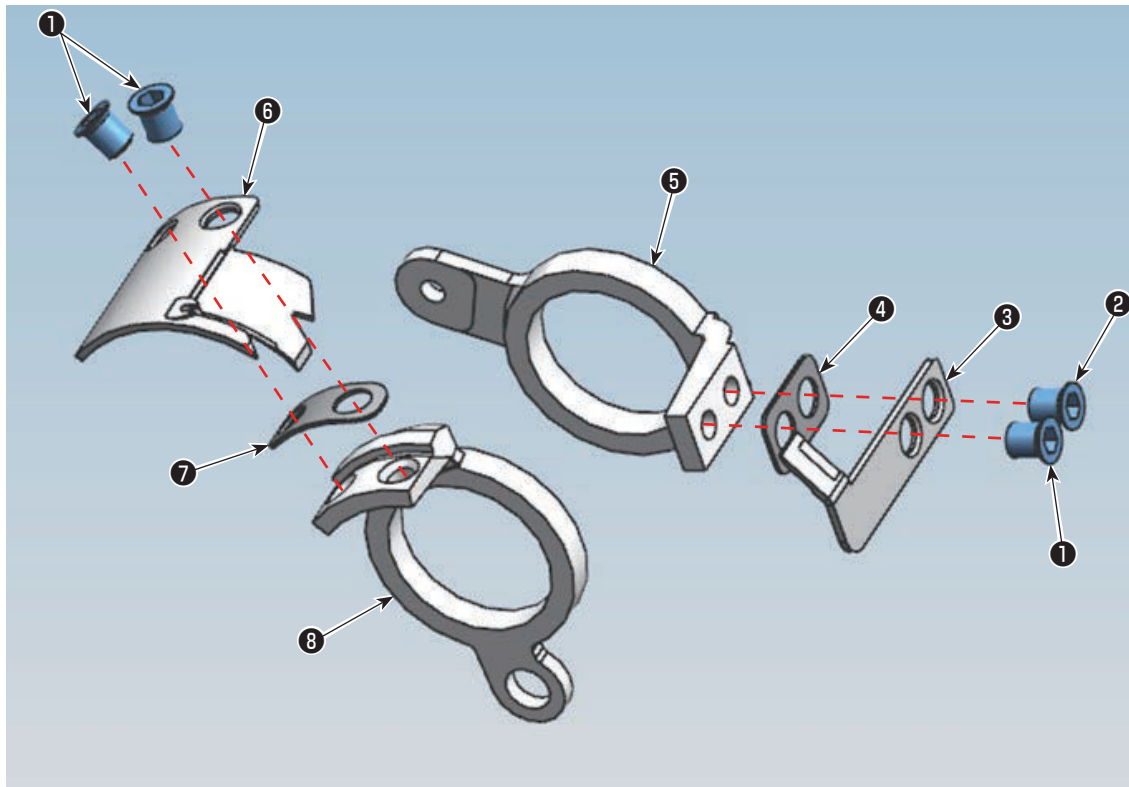


***ENGLISH***

**DDL-900C  
SUPER SHORT THREAD REMAIN KIT  
INSTRUCTION MANUAL**



### (1) List of components that come with the super short thread remain spacer

Part number of the super short thread remain spacer : 40309300

• List of parts supplied with the machine

No.	Description	Parts No.	Qty
④	Thread trimming knife spacer	40309298	1
⑦	Moving knife spacer	40309299	1

### (2) Installation

No.	Description	Parts No.
①	Knife setscrew	40263580
②	Thread trimming knife set-screw	40264700
③	Thread trimming knife	40263570
④	Thread trimming knife spacer	40309298
⑤	Thread trimming knife base	40263570

No.	Description	Parts No.
⑥	Moving knife	40263579
⑦	Moving knife spacer	40309299
⑧	Moving knife base	40263575

Loosen knife setscrews ① and thread trimming knife setscrew ② . Remove thread trimming knife ③ and moving knife ⑥ .

Place spacers ④ and ⑦ respectively between thread trimming knife ③ and thread trimming knife base ⑤ and between moving knife ⑥ and moving knife base ⑧ .

Then, secure the knives with knife setscrews ① and thread trimming knife setscrew ② .

\* Tightening torque: 1.5 to 2.0 N·m (15 to 20 kgf·cm)

### (3) Checking after the installation

Operate the thread trimming mechanism manually to make sure that there is no interference between the related parts before use.