



Parts Information

Series	Electric Device				
Model	Operating Panel				
Issue No.	A16P-029	Issued by	Sales technical dept.	Data of issue	Apr/18/2017

New Parts Number
 Replaced
 Discontinue
 Other

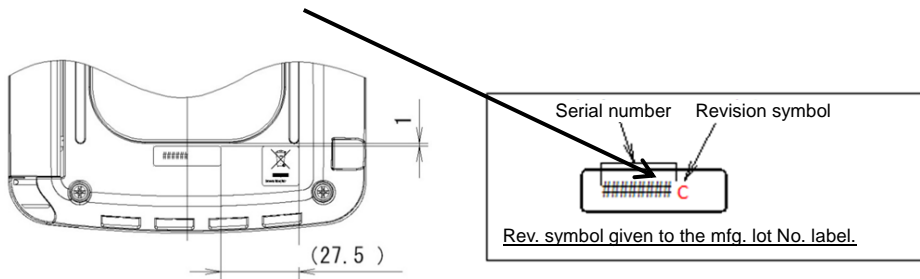
Change of IP-420 Parts (Cautions for Ordering Parts)

[Description]

There are old and new panel boards for the liquid crystal panel IP-420 and they are currently used in parallel. The old and new boards are not compatible and the parts are different. This material is designed to inform you the cautions when ordering the parts. Make sure to order the suitable parts.

<How to identify the type, old or new, from the appearance of the IP panel>

If the revision symbol on the back of the panel is "C or later", the board is a new type one.



<How to identify the type, old or new, by the packaging label>

"IP-NEW" is indicated (as the red frame in the figure below) on the packaging label of the new type IP-420.



		Purchase reference table	
Replacement part	When the target to be replaced is a new type IP420LCD touch panel	When the target to be replaced is an old type IP420LCD touch panel. *1	
How to order	You can order on a single item basis.	Replacement of all the parts needed including the additional gasket.	Contact the JUKI sales department.

[Changed parts: 4 parts. Details are described on the next and the following pages.]

Part name	New type	Old type	Remarks
LCD touch panel assembly	40086541	Same part No. with the design changed	A gasket must be added to the new type. (Part No.: 40166318)
LCD bracket	40083668	Same part No. with the shape changed	
Panel board assembly	40166481	40083960	
Flat cable	HW002650330	HW002180200	

Caution:

If the LCD touch panel is an old type, it is not compatible with the new type IP-420 board.

Contact your nearest JUKI sales dealer.

[Models subject to]



No.	Part No.	Panel type	Software RVL	Head type	Electrical type	Remarks
1	40181848	IP-420	No software	—	—	*
2	40112935		01.30.05	LBH-1790	MC-601	
3	40112936		01.40.05	LK-1900A	MC-596	
4	40105233		02.30.05	DP-2100	MC-650	
5	40105353		01.30.05	AMB-289	MC-640	
6	40118337		01.30.03	ACF-172	MC-545	
7	40086485		01.04.01	AMS-EN	MC-587/588/589	Full rotation model included
8	40101221		03.01.03	APW-895	—	
9	40090622		01.05.02	AB-1351	MC-615	
10	40105020		01.01.12	AP-876	MC-577	
11	40112002		01.20.05	AMS-210E/221E	MC-583/584	
12	40112003		01.10.04	AMS-224E	MC-585/586	
13	40121826		01.01.05	AMS-221EN7200	MC-588-1	
14	72000020		01.01.03	AP-874	MC-578	
15	40145024		01.01.04	AMS-221ENTS	MC-588-3	
16	—		01.01.12	AMS-210EN/TF10	MC-587-1	No setting of single item part No.
17	40144886		02.03.02	LK-1900B	MC-670	
18	40157654		03.01.03	APW-895N	—	

* If you use 40181848 (IP-420 without software), software items are needed on a machine basis.

Contact your nearest JUKI sales dealer.

[Details 1]

<How to identify the type, old or new, by the board>

LCD touch panel assembly		
Part No.	40086541	
Old/new	New type IP-420	Old type IP-420
Image		
Remarks	Add a gasket (Part No.: 40166318)*1	

Caution:

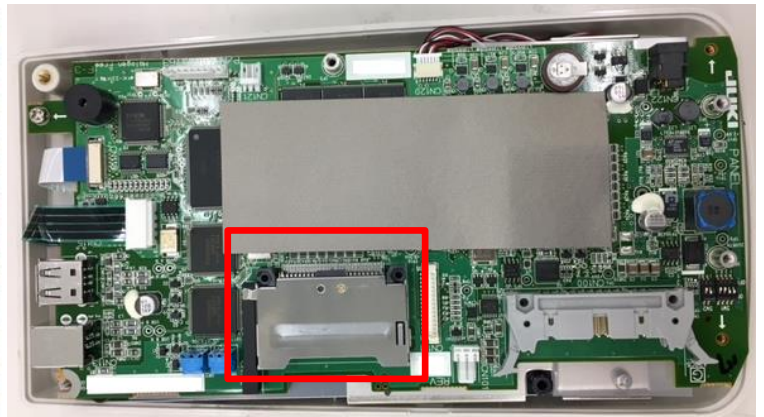
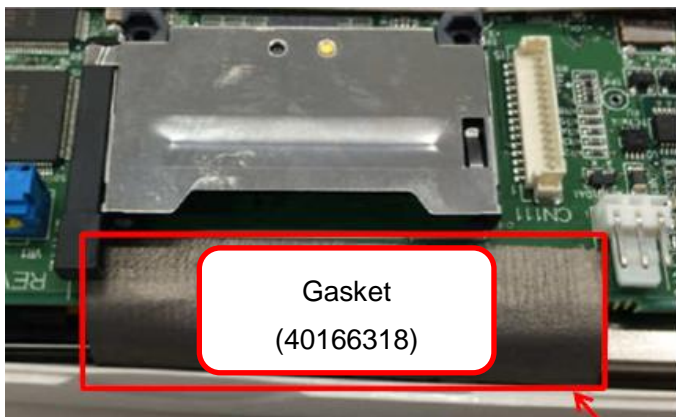
If the LCD touch panel is an old type, it is not compatible with the new type IP-420 board.

Contact your nearest JUKI sales dealer.



<How to identify old and new types by the gasket mounting manner>

A new type IP-420 is equipped with an additional gasket.

A new type IP-420 is bent on the side of the board and the case, and stuck so that it is L-shaped.



<How to identify the type, old or new, by the board>

Panel board assembly		
Part No.	40166481	40083960
Old/new	New type IP-420	Old type IP-420
Image		
Remarks		

Caution:

If the LCD touch panel is an old type, it is not compatible with the new type IP-420 board.

Contact your nearest JUKI sales dealer.

[Details 3]

<How to identify the type, old or new, by the flat cable>

	Flat cable	
Part No.	HW002650330	HW002180200
Old/new	New type IP-420	Old type IP-420
Image		
Remarks		

[Details 4] *1

<How to identify the type, old or new, by the startup screen>

The startup screen which appears when powered on is changed as shown below.

[New startup screen]



[Old startup screen]



Compared with the old type LCD, the new type LCD allows you to see a clear image in a wider visible range through its higher luminance.

The level of visibility may vary according to the version and the LCD.

E.O.F.