

**Overview of the courses** Monthly fee system **All courses are available for an affordable monthly fee.**

Target persons <b>Beginner-level sewing operator / The person who want to learn the basics of sewing</b>		
<b>Sewing Operator Training course</b>	<b>Supported language</b> English / Japanese / Bengali / Chinese / Hindi / Indonesian / Spanish* / Vietnamese <small>* Only the screen display will be in Spanish and the audio will be in English.</small>	<b>Course aim</b> Participants will learn basic knowledge and acquire practical skills, and demonstrate their abilities as employees of apparel, clothing, and factories.

Target persons <b>Sewing machine maintenance staff / Intermediate-level sewing operator</b>		
<b>Basic Knowledge of Sewing - Lockstitching</b>	<b>Supported language</b> English / Japanese / Chinese / Hindi / Vietnamese  <b>Supported language</b> English / Japanese	<b>Course aim</b> Focuses on the explanation of the main adjustment points (adjustment methods) that affect the formation of seams. The purpose of this course is to provide participants with the knowledge and skills to deal with stitching problems such as stitch skipping that may occur in actual sewing operation.
<b>Basic Knowledge of Sewing - Overlock stitch</b>		
<b>Basic Knowledge of Sewing - Coverstitch</b>		
<b>Basic Knowledge of Sewing - Double Chainstitch</b>		

Target persons <b>In charge of IE / Line leader</b>		
<b>Managerial Training Course - Production Design</b>	<b>Supported language</b> English / Japanese	<b>Course aim</b> Learn and understand the optimal production line design method and system. It also aims to "review factory lines and systems so that you can find improvements."



The fees vary with the type of education and course. Please visit our website for detailed information on the latest courses, supported languages, and prices.

Official website [https://www.juki.co.jp/industrial\\_e/service\\_e/elearning/](https://www.juki.co.jp/industrial_e/service_e/elearning/)

To apply, please use the QR code or URL on the right.



**Application form**  
[https://www.juki.co.jp/industrial\\_e/service\\_e/elearning/form.php](https://www.juki.co.jp/industrial_e/service_e/elearning/form.php)

**Operating environment** JUKI e-learning is available in the following environments

As of September 2024

● For PC users

Device used	OS	web browser
Windows	Windows 11 Windows 10	Chrome latest version Edge latest version Firefox latest version
Mac	MacOS14 (Sonoma) MacOS13 (Ventura)	Safari latest version Chrome latest version Firefox latest version
Chromebook (PC)	Google ChromeOS	Chrome latest version

● For smartphone and tablet users

Device used	OS	web browser
Chromebook (Tablet)	Google ChromeOS	Chrome latest version
iPhone	iOS17 iOS16	Safari latest version
iPad	iPadOS17 iPadOS16	Safari latest version
Smartphone Tablet	Android14 Android13 Android12 Android11	Chrome latest version

**Sewing Machine Inspection Support System**

守 破 離  
**JUKI-ShuHaRi**

Make your daily maintenance job a breeze with your smartphone

Registered Organization: JUKI CORPORATION Head Office  
The Scope of the Registration: The activities of research, development, design, sales, distribution, and maintenance services of industrial sewing machines, household sewing machines and industrial robots, etc., including sales and maintenance services of data entry systems.

**JUKI** JUKI CORPORATION  
SEWING MACHINERY & SYSTEMS BUSINESS UNIT

2-11-1, TSURUMAKI, TAMA-SHI, TOKYO 206-8551, JAPAN  
PHONE: (81) 42-357-2370 FAX: (81) 42-357-2274  
<https://www.juki.co.jp/en>

- Specifications and appearance are subject to change without prior notice for improvement.
- Read the instruction manual before putting the machine into service to ensure safety.
- QR code is a registered trademark of DENSO WAVE INCORPORATED.

OCTOBER, 2024 Printed in Japan(TN)

JUKI has launched its long-awaited online learning system to develop excellent human resources!

A human resource development program designed for the sewing industry

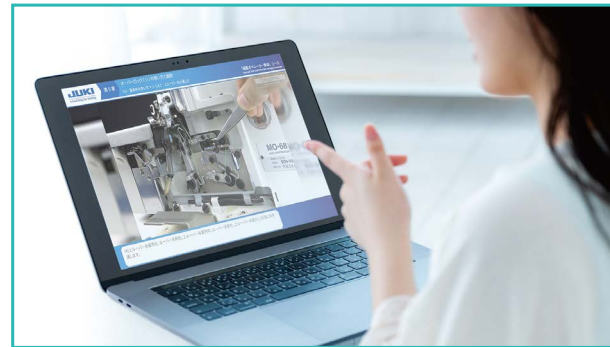
# JUKI e-learning

**Individual training type**

No restrictions on time or place!

**Group training type**

Upskilling of many training participants all at once!



**Let's watch sample videos!**

[https://www.juki.co.jp/industrial\\_e/service\\_e/elearning/](https://www.juki.co.jp/industrial_e/service_e/elearning/)



# “New employee training” and “staff training” — JUKI e-learning is the perfect solution for both!

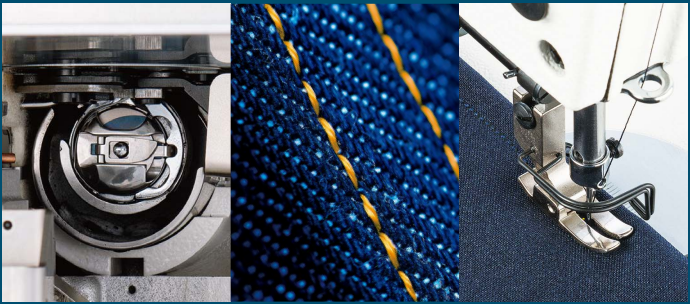
## Learning the essential basics in the sewing industry

Many people are working in sewing-related industries around the world. Yet surprisingly few teaching materials have been developed to provide basic knowledge on sewing machines and sewing technology. Sewing machine operators therefore tend to be self-taught. The basic knowledge and skills acquired through JUKI e-learning can be immediately applied to daily work.



## Gaining knowledge and experience from the online learning system

The JUKI e-learning program has been developed based on accumulated know-how and experience JUKI has acquired in technical training and management training over its long history. With easy-to-understand videos and narrations, training participants can seamlessly learn wide-ranging topics and skills. At the end of each chapter, the participant takes a test to confirm how well he/she understands the content.



Two different types of training are provided: Customers can select the type that suits your condition.

### Learning individually!

## Individual training type



The individual training type is provided in a standard e-learning format. The training participant takes the individual e-learning courses using Individual PC, tablets or smartphone. The management user can manage his/her progress on the web.

The Individual e-learning training is recommended for the following customers ✓

Customers who can prepare an internet connection and device for every training participant.

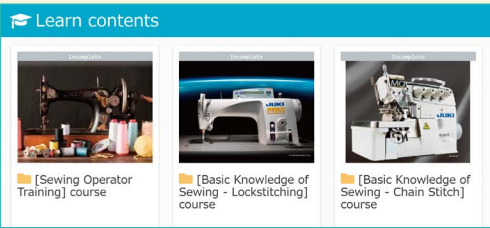
Customers who cannot provide group training because of heavy workloads.

Customers with many employees spread across multiple remote locations.

### 1 Selecting a course

Please see the back cover for information on each course.

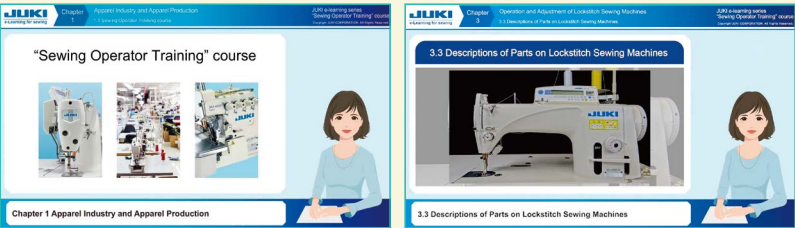
Visit the JUKI e-learning website on your PC, smartphone, or tablet browser to select an available course.



Individuals can select the training courses best suited to their learning needs.

### 2 Taking part in the e-learning courses by watching videos

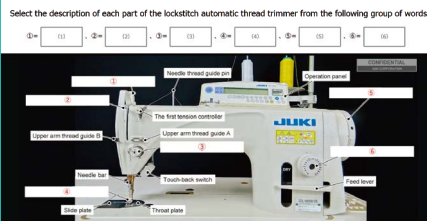
Each training course is divided into several chapters. (A course takes about three hours, and a chapter takes about 10 to 30 minutes to learn.) Videos with audio commentary make it easy to learn the content.



Training participants can repeat the course whenever they want.

### 3 Conducting a short test

At the end of each chapter, the training participant takes a test to confirm that he/she has learned the content. A PDF certificate of completion will be issued to every participant who completes all of the chapters and passes all of the tests.



Issuing a certificate of completion



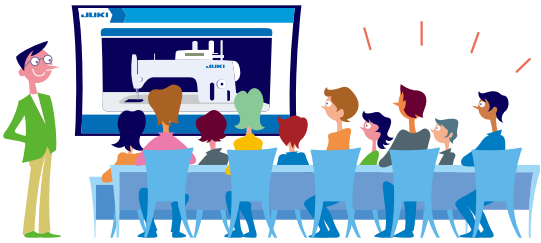
### 4 Learning management function

The learning progress and learning histories of the training participants are displayed in an easy-to-understand list format. The management user can manage the learning of all of the participants.

Manage scores									
Your scores List per question Progress record									
Scores per group									
Group	Name	Sign-in ID	Folder name	Content name	Points/Answer rate	Status	Lea		
JUKI Staff	JUKI Member1	JUKI-Member1	LMS TYPE	Chapter1 Confir	90 points	Pass	202		
JUKI Staff	JUKI Member2	JUKI-Member2	LMS TYPE	Chapter1 Confir	90 points	Pass	202		
JUKI Staff	JUKI Member3	JUKI-Member3	LMS TYPE	Chapter1 Confir	80 points	Fail	202		
JUKI Staff	JUKI Member4	JUKI-Member4	LMS TYPE	Chapter1 Confir	30 points	Fail	202		
JUKI Staff	JUKI Member5	JUKI-Member5	LMS TYPE	Chapter1 Confir	20 points	Fail	202		

### Learning together!

## Group training type



The group training type is provided in a lecture format using JUKI e-learning materials. The group training is conducted with a large number of participants at the same time. To carry out group training, an instructor has to be prepared within the customer's company.

The group e-learning training is recommended for the following customers ✓

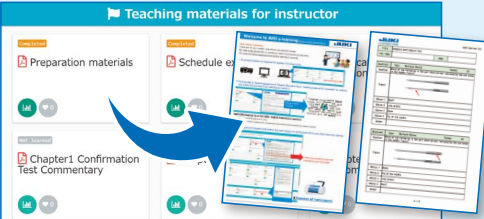
Customers who cannot provide separate Internet connections and devices for all of their training participants.

Customers who want to provide all of the training in a single session to lower their costs.

When a customer wants to provide training in an unsupported language, the customer's instructor will translate the e-learning materials to be used for the training.

### 1 Downloading and printing the materials

First, an instructor has to be prepared within the company. Before conducting the group training, the instructor visits the JUKI e-learning website to download and print the instructional materials.



### 2 Conducting the training with videos

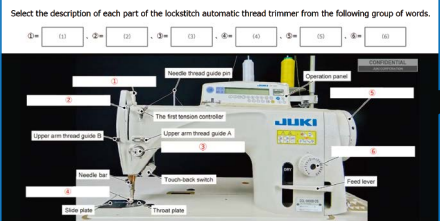
Training participants gather together in one place. The instructor uses videos and instructional materials to conduct the training. To help the instructors, the JUKI e-learning website provides instructions on how to proceed through the training from the opening remarks to the completion of the tests. Background information, suggestions, and advice are also provided. The JUKI e-learning website also offers wide-ranging materials to support learning by the instructors themselves. The instructor training can be carried out at the same time.



The instructors and participants can also discuss the training content and exchange ideas in other ways.

### 3 Conducting a short test

The training participant takes a test to confirm to using pre-printed confirmation test forms that he/she has learned the content. The instructor can give feedback to the participants on the spot using the test answers and explanations provided by JUKI. A certificate of completion can be printed and distributed to the participants after the course.



Issuing a certificate of completion



Whichever e-learning course they take, all of the training participants will improve their skills!

