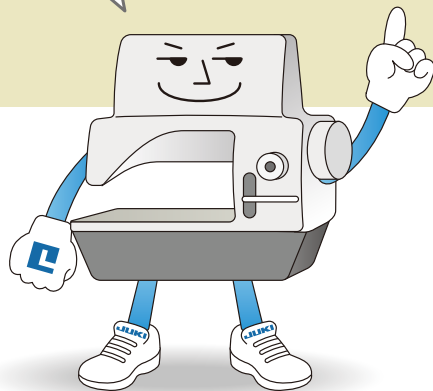
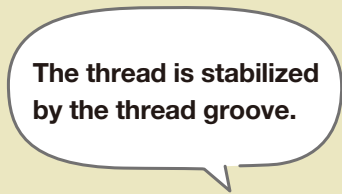
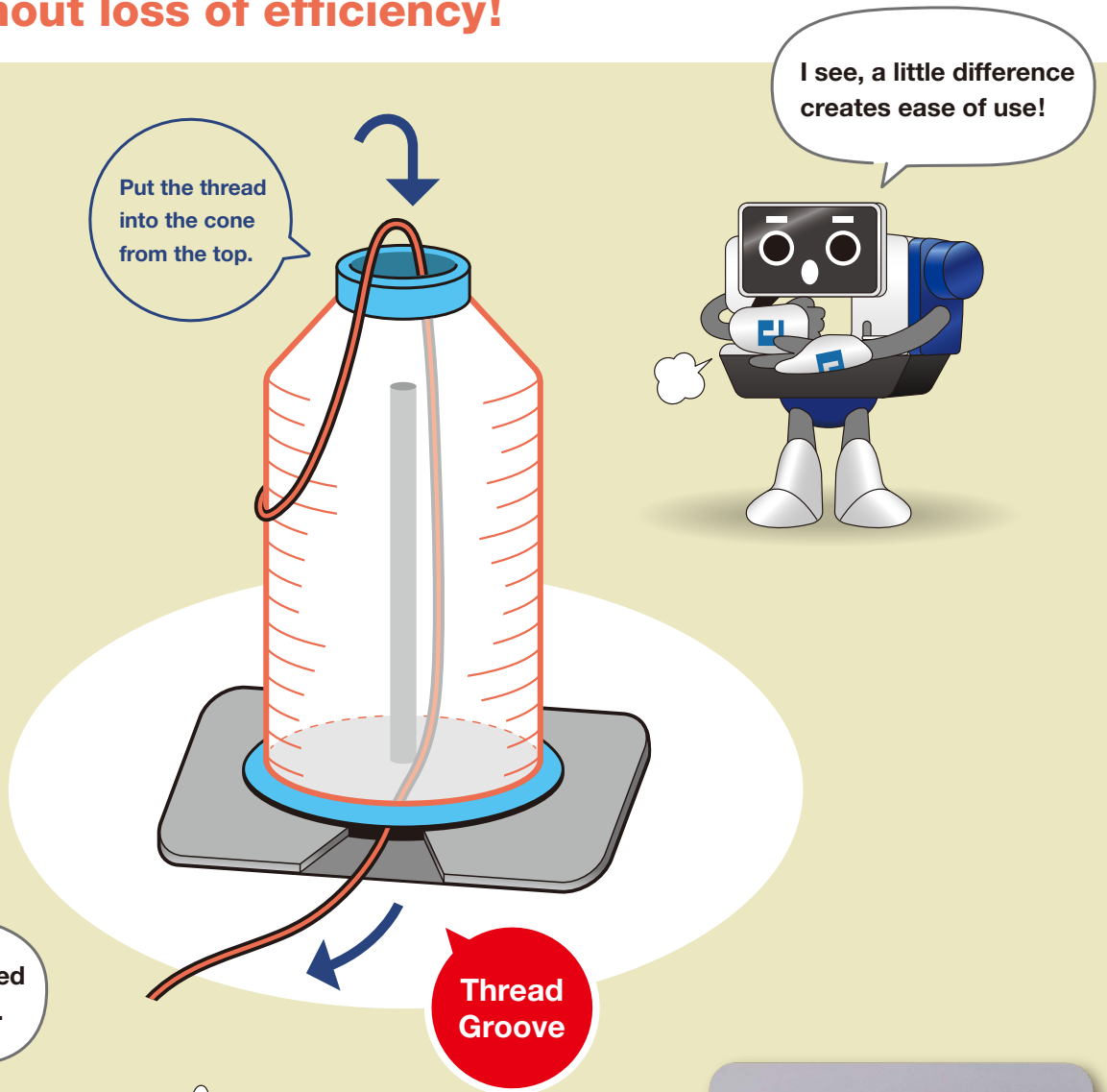


# Thread Lock Preventer Base Plate

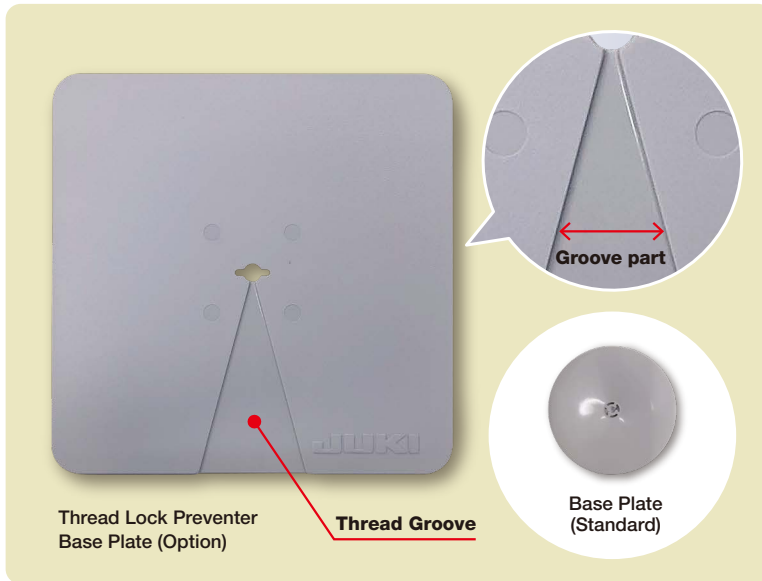
**Reduced “twisting and untwisting thread”  
due to thread flapping!**

**The base plate with a thread lock preventer allows you  
to work without loss of efficiency!**



# Use this base plate with a thread lock preventer to reduce “twisting and untwisting thread” caused by thread flapping!

For the sewing products using thick threads such as **car seats** **furniture** **handbags** etc.

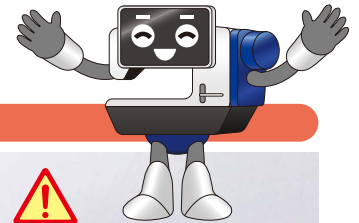


## Thread Lock Preventer Base Plate

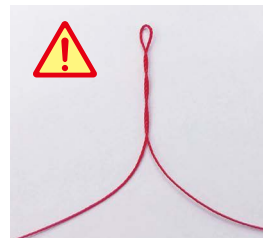
Model name 40205645

- Made of vinyl chloride
- H140mm×W140mm, D2mm
- Recommended Size of thread: 69, 138, 192, 207, 277, 300

Such troubles are greatly reduced!



## Trouble example



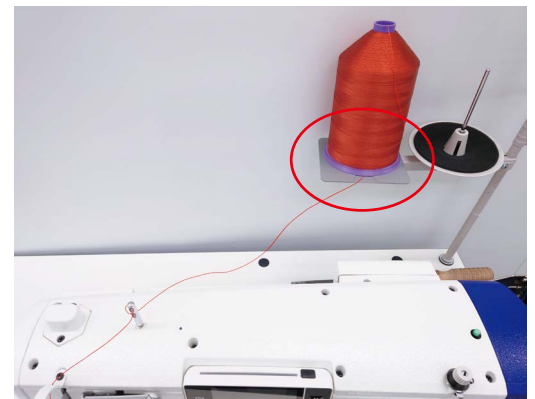
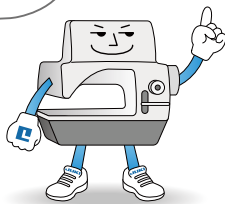
Thread twist



Thread untwist

By adding a thread groove to the base plate, the thread can be fed out from under the cone. “Thread twist” and “thread return” caused by thread flapping are reduced, allowing you to continue working without stopping. Furthermore, since there is no spool rest arm, the area around the thread stand looks neat and beautiful.

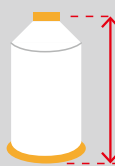
Wasted time due to trouble is reduced!



Put the thread inside the cone from the top, pass it through to the bottom, and use it by pulling it out from the thread groove of the base plate. The thread can be stabilized by passing through the narrow groove.

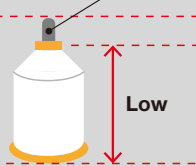
CAUTION

Good



High

Bad



Low

Spool rest rod



If you use a cone lower than the spool rest rod, the thread will get entangled in the rod. Make sure to use a cone higher than the spool rest rod.

**JUKI**  
JUKI CORPORATION  
CUSTOMER BUSINESS COMPANY

2-11-1, TSURUMAKI, TAMA-SHI,  
TOKYO 206-8551, JAPAN  
PHONE: (81) 42-357-2360  
FAX: (81) 42-357-2380  
<https://www.juki.co.jp/en>

\* Specifications and appearance are subject to change without prior notice for improvement.  
\* Read the instruction manual before putting the machine into service to ensure safety.  
\* This catalogue prints with environment-friendly soyink on recycle paper.  
\* Paper from responsible sources FSC™ C001712