

PS-910-13090 Series

Machine Head Rotation Pattern Seamer

Sewing area 1,300mm(X) × 900mm(Y)

Your Ingenuity creates opportunities for Automation



Please watch the video clip



YouTube



Facebook

JUKI official site

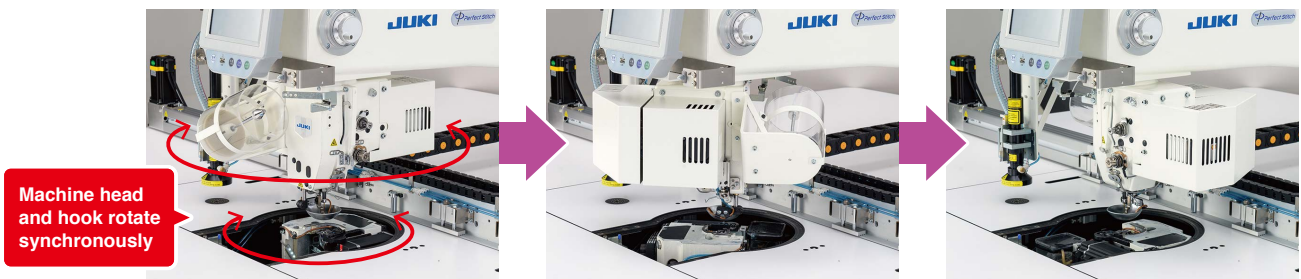


List of optional items

PS-910SB13090CKZ

Machine head rotation mechanism helps achieve high-quality seams uniformly in every sewing direction

JUKI's unique synchronization technology controls the machine head, hook and feed mechanism, thereby creating the most favorable seams. In case of continuous circumference sewing, the sewing machine constantly detects the direction of sewing. As a result, consistent-quality seams are produced regardless of the direction of sewing.



Cloth trimmer specifications

A laser cutter is available for the cloth trimmer specification. This laser cutter is suitable for soft materials such as knit fabrics.



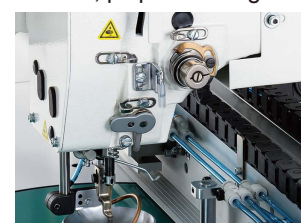
Adopts a full-rotary double-capacity hook

The same full-rotary double-capacity hook as the PS-800 series is used. It provides stable sewing and reduces the time required for changing the lower thread.



Active tension

Market-prov active tension has been introduced to the needle thread tension controller. With the active tension, pinpoint changes in the needle thread tension during sewing are enabled. The needle thread tension, therefore, can be set in conjunction with the material thickness and can be corrected according to the direction of sewing on a stitch-by-stitch basis through the operation panel.

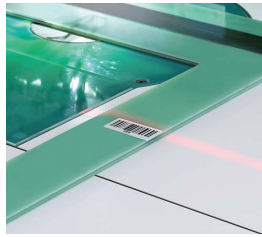


Patterns are identified by means of RFID/Barcode reader to enable automatic reading of sewing data

Sewing patterns are automatically identified by means of RFID/Barcode reader to automatically call up the relevant sewing program, thereby starting sewing quickly.

RFID (radio frequency identification)

It is the technology to read and write data saved on IC chips through wireless non-contact transfer of radio frequency waves and is used to identify and manage products.



Operation panel

The sewing pattern data format supports DXF, AI, PLT, and DST. Sewing pattern data in these formats are widely used in many sewing plants. As a result, the operation panel is able to use the customers' existing sewing pattern data immediately. As many as 999 sewing patterns can be saved on the large-capacity memory of the operation panel. (Editing software is included with the accessory.)

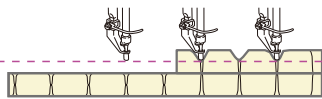


Intelligent Medium-Presser Foots

It is possible to change the intermediate presser height at its lower dead point steplessly during sewing. This feature is particularly effective when sewing multi-layered portions of material. Since the material is stably held by the intermediate presser, sewing troubles such as stitch skipping and thread breakage are prevented.

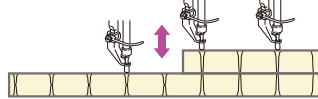
Intermediate presser in general

Height of the intermediate presser is fixed at a certain height.



Programmable intermediate presser

The intermediate presser goes up/comes down in accordance with the set value.



Optional device

Option	Parts No.	Features	Remarks
Plastic bobbin (10 pieces)	40244784 (Blue) 40245125 (Red) 40245137 (Yellow)	Since the plastic bobbin is lighter than aluminum and iron, the thread tension is stable at a high level. (for light weight materials specifications (S))	Standard equipment is 1 piece
BK-10 Bobbin changer device	40270689	Provided that a spare bobbin case which is loaded with a bobbin fully wound with thread is set before starting sewing, automatic replacement of bobbin cases is enabled to spare the operator the trouble of changing bobbin cases by hand, thereby increasing production efficiency.	As many as seven spare bobbins can be placed in the cassette.
DP needle bar	40228112	It is a needle bar when using a DP needle for heavy weight materials specifications (H).	
Thick Material kit	40270717	This is the gauge parts set for sewing heavy weight materials. (needle plate, medium-presser foot, boat presser, thread trimmer fixed-knife)	
Barcode reader unit	40289310	Sewing pattern that matches the template can be called up when the barcode on the template is read by the barcode reader.	

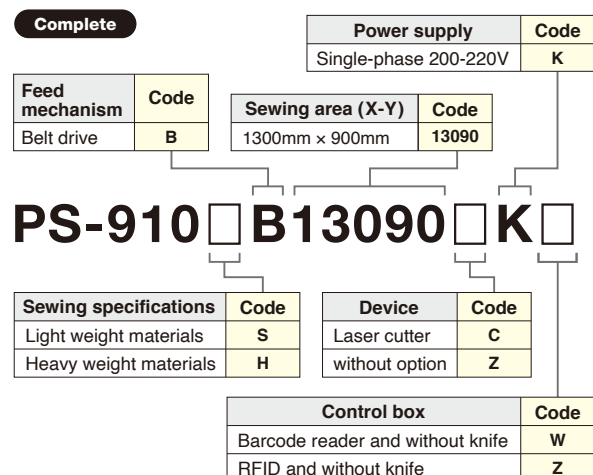
SPECIFICATIONS

Model name	PS-910S (H) B-13090CKZ PS-910S (H) B-13090CKW	PS-910S (H) B-13090ZKZ PS-910S (H) B-13090ZKW
Sewing area	1,300 mm × 900 mm	
Max. sewing speed	3,000 sti/min*	
Lubrication	Semi-dry	
Feeding type	Belt Drive	
Stitch length	0.5 - 12.7 mm	
Hook	Full-rotary double-capacity hook	
Cutter equipment	Laser	-
Lift / Stroke of intermediate presser	Lifting amount: 20 mm / Stroke: Standard 4 mm	
Variable lower position of the intermediate presser	0 - 9 mm	
Needle	PS910SB: DB × 1 #8 (8#~12#) PS910HB: DB × 17 #21 (18#~23#)	
Template recogniser	RFID: 13090CKZ Barcode: 13090CKW	RFID: 13090ZKZ Barcode: 13090ZKW
Storage of pattern data in the memory	Max. 999 patterns (5,000,000 sti/pattern)	
Number of indentifiable patterns	999 patterns	
Program input mode	USB	
Weight	706kg (CKW)	636kg (ZKW)
Dimensions	2,326mm (W) × 2,100mm (L) × 1,537mm (H)	

*sti/min is the abbreviation for "stitches per minute"

WHEN YOU PLACE ORDERS

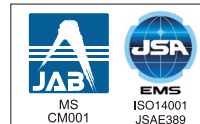
Please note when placing orders, that the model name should be written as follows:



The AW-3S is an eco-friendly product which complies with JUKI ECO PRODUCTS standards for protecting the environment.



● The sewing machine complies with the "Juki Group Green Procurement Guidelines" on the use of hazardous substances, which is stricter than other restrictions, such as those of the RoHS Directive.
For details of JUKI ECO PRODUCTS, refer to: <https://www.juki.co.jp/en/company/eco>
*The RoHS Directive is an EU Directive limiting the use of 6 hazardous substances (lead, hexavalent chromium, mercury, cadmium, PBB and PBDE) in electrical and electronic equipment.
*The Juki Green Procurement Guideline is the voluntarily established criteria to eliminate not only the aforementioned six substances, but also other ones which also adversely affect the environment.



Registered Organization:
JUKI CORPORATION Head Office
The Scope of the Registration:
The activities of research, development, design, sales, distribution, and maintenance services of industrial sewing machines, household sewing machines and industrial robots, etc., including sales and maintenance services of data entry systems.



JUKI CORPORATION SEWING MACHINERY & SYSTEMS BUSINESS UNIT

2-11-1, TSURUMAKI, TAMA-SHI, TOKYO 206-8551, JAPAN PHONE: (81) 42-357-2370 FAX: (81) 42-357-2274 <https://www.juki.co.jp/en>

● Specifications and appearance are subject to change without prior notice for improvement. ● Read the instruction manual before putting the machine into service to ensure safety.

● This catalogue prints with environment-friendly soyink on recycle paper. ● Paper from responsible sources FSC™ C001712

FEBRUARY, 2024 Printed in Japan(TN)