

# JaNets Hanger System

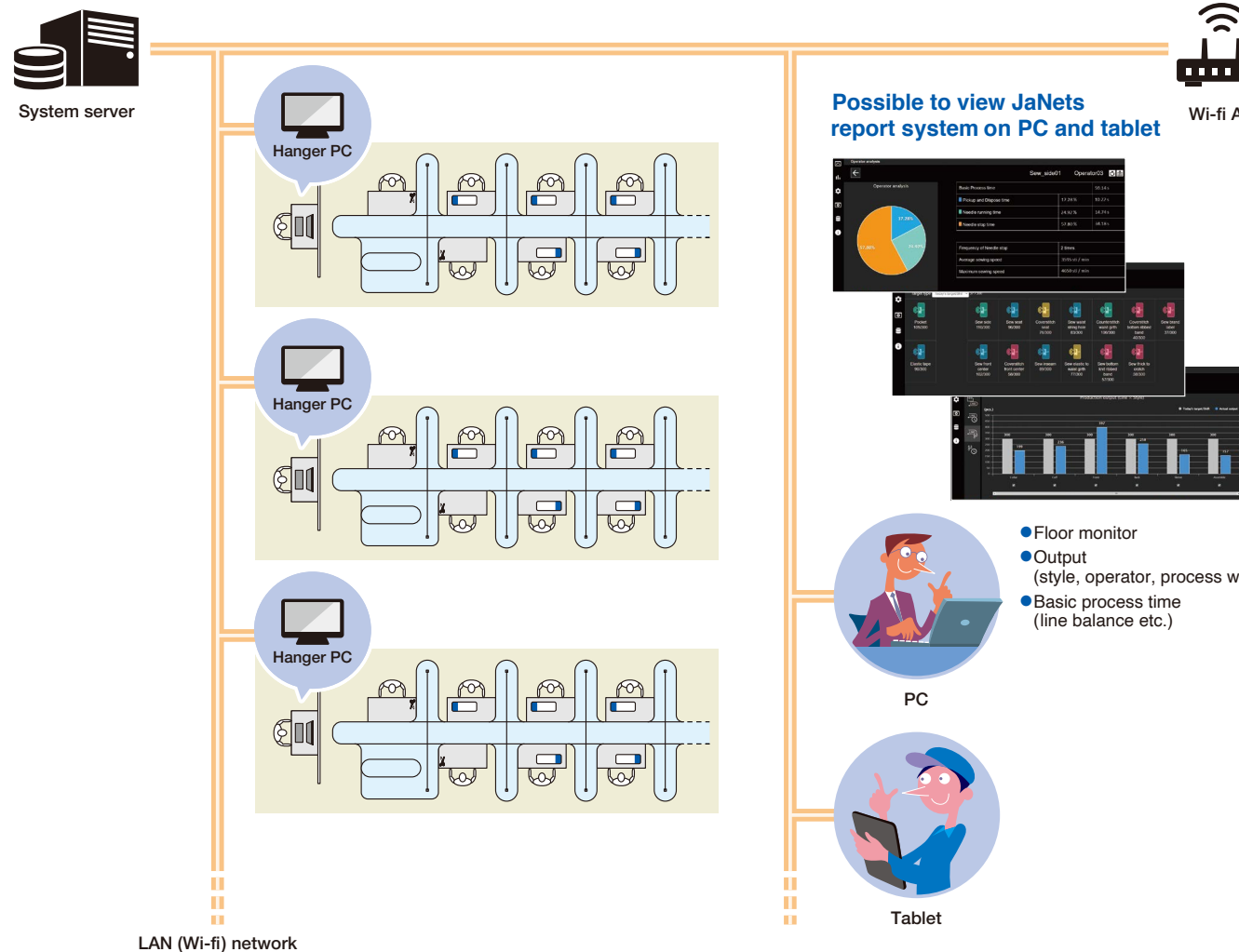
ver.1



Propose JUKI's Smart Hanger Solution  
by Connecting with JaNets

**JUKI Smart Solutions**  
Innovation with our Best Global Support

## Configuration of JaNets Hanger System



Please use this free app for smartphones also

Sewing Machine Inspection  
Support System

守破離

**JUKI - ShuHaRi**

Make your daily  
maintenance job  
a breeze with  
your smartphone



Registered Organization:  
JUKI CORPORATION Head Office  
The Scope of the Registration: The activities of research, development, design, sales, distribution, and maintenance services of industrial sewing machines, household sewing machines and industrial robots, etc., including sales and maintenance services of data entry systems.

**JUKI** 2-11-1, TSURUMAKI, TAMA-SHI,  
TOKYO 206-8551, JAPAN  
PHONE: (81) 42-357-2370  
FAX: (81) 42-357-2274  
SEWING MACHINERY & SYSTEMS BUSINESS UNIT <https://www.juki.co.jp/en>

\* Specifications and appearance are subject to change without prior notice for improvement.  
\* Read the instruction manual before putting the machine into service to ensure safety.  
\* This catalogue prints with environment-friendly soyink on recycle paper.  
\* Paper from responsible sources FSC™ C001712

## Types of stations, hangers, and installation methods

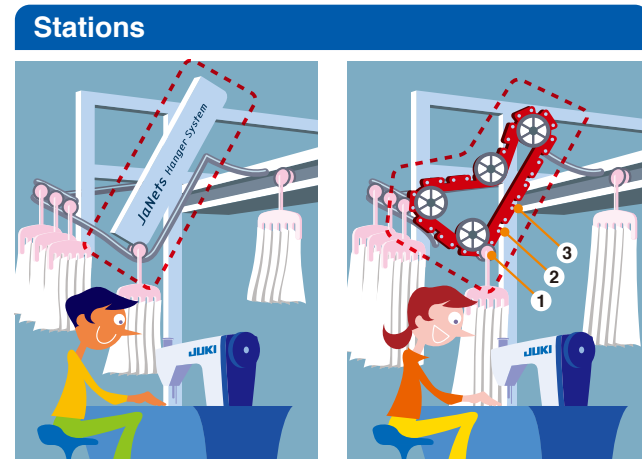
Hanger system is a production system which transports products to the sewing station on hangers. JUKI offers the most suitable hanger system considering sewing items and factory facilities.

### For customers considering installation of hanger system

- The automatic conveyor system reduces the amount of work required to pick up and dispose the products, and is expected to result in higher productivity than conventional sitting production.
- Each hanger is equipped with RFID for traceability of product number, color, size, and work-in-progress position.
- The use of operator IDs makes it possible to get data for each operator.

### Each can be freely combined

Possible to combine installation methods, stations, and hangers freely.



**Standard type**

**Chain type**

The stop position of the hanger can be adjusted as shown in ① to ③. It's suitable for transporting long items.

### Installation methods



**Stand type**

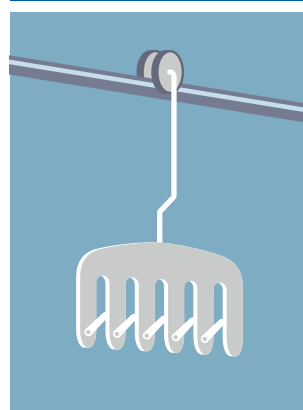
Set up and fix poles on the floor.



**Ceiling type**

By hanging from the ceiling, there is no obstruction under the hanger system, so the equipment can be easily arranged.

### Hangers



**Standard type**

Hooks each part onto the clips.



**Basket type**

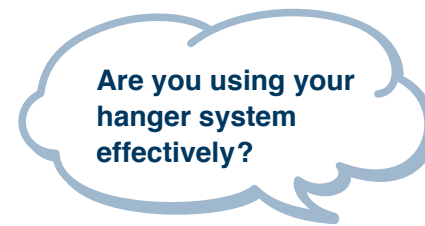
It can be used for bundle production.

### Product lineup

Product number	Model	Stations	Hangers	Installation methods	Length*(mm)	Examples of item, features
40278384	JA-AH-AT1650A	Standard	Standard	Stand or Ceiling	1,650	Knit (T-shirt, foundation)
40278383	JA-AH-AT1750A		Standard		1,750	Apparel (e.g. jackets, pants, shirts)
40278386	JA-AH-AT1750B		Basket		1,750	Bundle production
40278385	JA-AH-AT2000B	Chain	Standard	Stand or Ceiling	2,000	Apparel (long items)
40278382	JA-AH-CT1750A		Standard		1,750	Apparel (long items)
40278381	JA-AH-CT2000A		Standard		2,000	Apparel (long items)
40278388	JA-AH-CT1750B		Basket		1,750	Bundle production
40278387	JA-AH-CT2000B	Basket			2,000	Bundle production

\*Interval between stations

Power & air consumption			
Rated output	Hanger main motor	750W	Voltage
	Station motor	15W (Standard type) 40W (Chain type)	
			Voltage
			1-phase 220V
			3-phase 380V
			Air consumption
			9m³/h 0.45-0.50MPa (Less than 35 stations)
			12m³/h 0.48-0.50MPa (35-45 stations)



**Line progress management by connecting JaNets Hanger System with JaNets, makes higher productivity than sitting operation!**

### Connection with JaNets JT Simple (Equipment operation management system)

**JUKI ONLY**

## Visualization with JaNets!

Production progress of hanger lines can be obtained in real time from JaNets reports!

### Basic process time

The logic developed for JaNets enables accurate basic process time and line balance. Due to the line balance graph that takes into account multiple tasks, and makes it possible to accurately find the bottleneck processes regardless of the amount of hangers in use.



### Operation rate

By connecting with JaNets, you can see the equipment's operation rate and check whether each equipment in the hanger line is effectively utilized. It's possible to grasp the sewing skill level of each operator. Downtime of each sewing machine can also be monitored. This allows quick response to machine breakdowns and minimizes production loss.

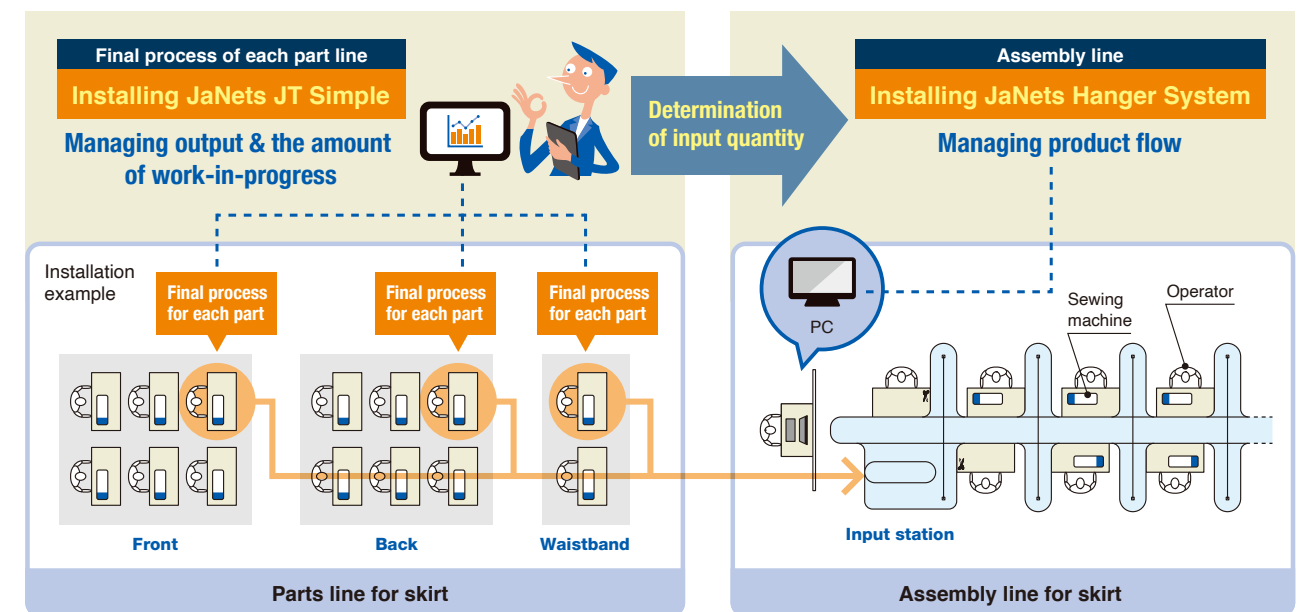
• Optional parts are required



### JaNets Hanger System installation proposal

## Connection with JaNets!

The input amount for the assembly line can be examined based on the parts output managed by JaNets, preventing delays in the input of parts for the assembly line!



### The flow of installation



\*It's in case of connecting with JaNets JT Simple. JaNets Hanger System can be purchased individually.