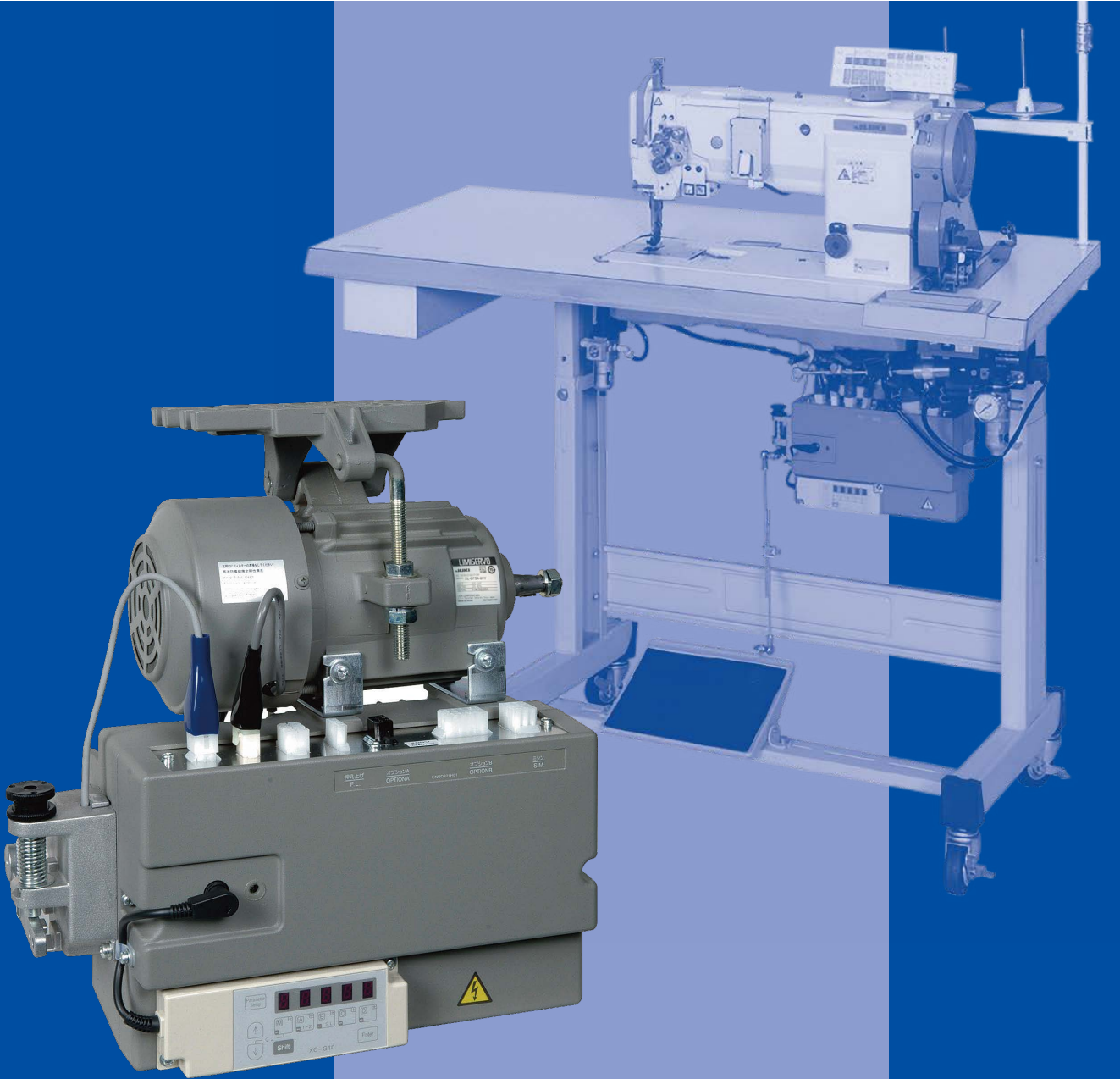




LIMISERVO X G Series

Control box, Motor, Panel



Achieving a compact and lightweight motor!
Enhanced step sequence function!

LIMISERVO X

G Series

SPECIFICATIONS

Control box		XC-GMF*-10-05	XC-GMF*-20-05	XC-GMF*-20-07
Motor		XL-G554-10Y	XL-G554-20Y	XL-G754-20Y
Power supply		Single-phase 100-120V	Single-phase, 3-phase 200-240V*1	
Rated output		550W		750W
Rated speed		3,600 sti/min*2		
Rated torque		1.47N•m (0.15kg•m)		1.96N•m (0.2kg•m)
Speed control range		70 sti/min to 8,999 sti/min*2		
		Shipping setting (250sti/min to 4,000sti/min*2)		
		50 sti/min to 3,600 sti/min*2		
Detector		XC-KE-01P		
Environment	Ambient temperature	5°C to 40°C		
	Ambient humidity	30%RH to 95%RH (no condensation)		
	Max. altitude	Above sea-level 1,000m		
Mass		Control box: 3.5kg (net), 6.9kg (gross), Motor: 6.9kg (net), 9.1kg (gross)		
Packaging style		Carton box < L: 490mm × W: 402mm × H: 227mm > (When motor and control box are packaged as set)		

*1 Please refer to the instruction manual for details of the connection method.
*2 sti/min is the abbreviation for "stitches per minute"

WHEN YOU PLACE ORDERS

Please note when placing orders, that the model name should be written as follows:

Control box

XC-GMF□□□-□□-□□

Destination	Code	Power supply	Code	Rated output	Code
for general export	Y	Single-phase 100-120V	10	550W	05
for ce	YCE	Single-phase·3-phase 200-240V	20	750W	07

*Please refer to the instructions manual for the single-phase connection method coded "20".

Control box / Motor

XL-G□54-□□Y□XC-GMF□□□-□□-□□

Rated output	Code	Power supply	Code	Destination	Code	Power supply	Code	Rated output	Code
550W	5	Single-phase 100-120V	10	for general export	Y	Single-phase 100-120V	10	550W	05
750W	7	Single-phase·3-phase 200-240V	20	for ce	YCE	Single-phase·3-phase 200-240V	20	750W	07

*Please refer to the instructions manual for the single-phase connection method coded "20".

*Please refer to the instructions manual for the single-phase connection method coded "20".

Panel

XC-G10□-CE-ZA

Installation layout	Code
Bottom	S
Top	L

XC-G500Y-CE-ZA

Destination	Code
for export	Y

Auto presser foot lifter unit

LE-FA-ZA

Variable speed pedal

XC-CVS-3-ZA



<https://www.juki.co.jp/en>

JUKI CORPORATION
SEWING MACHINERY & SYSTEMS BUSINESS UNIT

2-11-1, TSURUMAKI, TAMA-SHI, TOKYO 206-8551, JAPAN
PHONE: (81) 42-357-2383 FAX: (81) 42-357-2274

JUKI TECHNOLOGIES CORPORATION
NAGOYA OFFICE

1-1801, KAMIYASHIRO, MEITO-KU, NAGOYA-SHI, AICHI 465-0025 JAPAN
PHONE: (81) 52-772-6412 FAX: (81) 52-772-6420

*Specifications and appearance are subject to change without prior notice for improvement.
*Read the instruction manual before putting the machine into service to ensure safety.

DECEMBER, 2024 Printed in Japan(TN)

LIMISERVO X G Series

Compact, lightweight motor with complete range of convenient functions!



Realization of Compact, Lightweight Motor

Motor size reduced by approximately 60% when compared with previous motor (XL-554). Motor weight reduced by approximately 1.7kg.

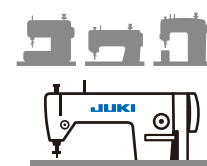
Control Box / Motor

The LIMISERVO X G Series includes auto thread trimming, presser foot lifting, fixed-stitch stitching, continuous stitching and backtacking. When connected to operation panel, there are step sequence, simple sequence and PC communication functions. Equipped with 8 solenoid drive outputs, 2 electromagnetic valve outputs, 1 small-signal output and 14 input terminals including variable voltage input.

Compatibility Settings Table for Adapted Machines

○: Needle positioner function
◎: Thread trim function

Lockstitching	Overlock	Chainstitching	Zigzagstitching	Whipstitching
◎	○	○	○	○



Applicable to sewing machines of other companies

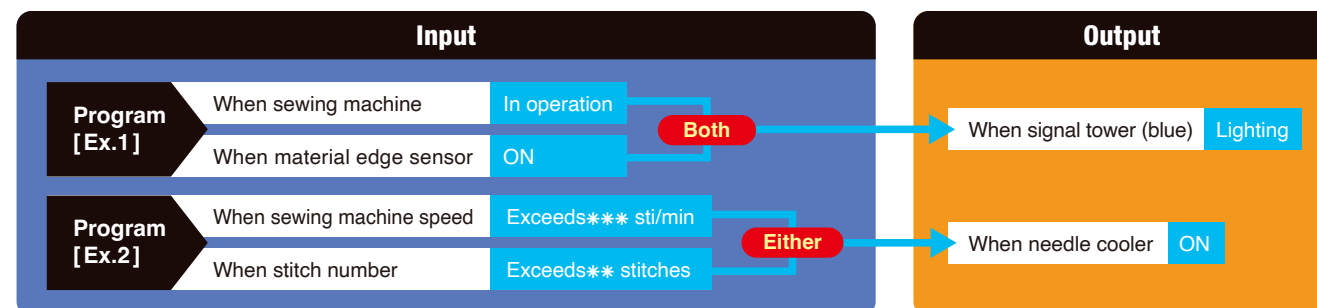
By selecting the sewing machine from the simple mode setting of the control box, it is possible to easily set the thread trimming timing and other sewing machine settings of other companies' sewing machines. You can reduce the time required for adjustments.

Abundant program functions

Step Sequence Function Condition settings also possible with multiple combining

- This function enables easy programming of the desired input, output and machining operation conditions in sequence with the stitching process.
- Various operations can now be incorporated into the "stitching process", including those performed before and after operation.

Extensive upgrade of existing machine simple sequence mode!



Direct Parameter No. Call-up Function

Previously it was necessary to select the respective mode to perform settings when making changes to the parameters, however, by using the XC-G10S (L), XC-G500Y operation panel, it is now possible to call up the required parameter in a single operation. It is also possible to call up parameters for each mode.

[Ex.] Checking parameter "RU." call-up No."36" from list.

Name	Function	No.
RU.	Reverse run needle lifting after thread trimming	0036
R8.	RU reverse run angle	0037

No. Selection



Single Operation Call-up

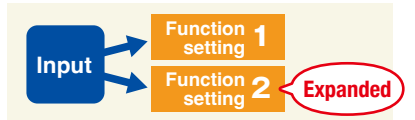


User-Friendly Functions Computer Interface Standard Equipment

- Settings data control including batch writing, reading and saving of settings can be performed using the setup software. (XCG_SET)
- Step sequence creation, editing, etc. can be performed using the dedicated step sequence software. (XCG_STEP)

Full Functionality Inherits the LIMISERVO X F Series!

- The settings data save function has been expanded to enable saving of settings data from 1 model to 2 models.
- A parameter change difference display has been added. (A flashing dot [.] displays at the changed parameter.)
- 2 types of function setting can now be performed with a single input.



Interchangeability

You can use it as is

- Detector: XC-KE-01P (K14MXCKE01P0)
- Auto presser foot lifter unit: LE-FA
- Variable speed pedal: XC-CVS-3

It is available with an optional attachment bracket

- Motor: XL-554

Options

Operation Panel	XC-G10S (L)-CE (control box attachment type) XC-G500Y-CE	Impossible to use it together
Auto presser foot lifter unit	LE-FA: Air type (shared 30V / 24V use)	
Variable speed pedal	XC-CVS-3: 3-speed pedal, standing machine	
Lever unit (separated type)	XC-GL-1-SET: K14M72300101 (1-step kick-back use [installation plate, extension cable set]) XC-GL-2-SET: K14M72300102 (2-step kick-back use [installation plate, extension cable set])	
Extension cables	1.0m motor cable (200V): M97318099 1.0m encoder cable: K14M71725402	
Installation metal fittings	New motor and old control box: K14M72354001 Old motor and new control box: K14M72354101	

*The operation panel, auto presser foot lifter unit and variable speed pedal are products, not parts.



XC-G10 type panel
The existing operation panel can be attached to and removed from the XC-G10 Series operation panel.



XC-G500 type panel
Significant enhancements have been made to the operability of the XC-G500-Y Series operation panel over existing functionality (XC-E500-Y), and the settings data memory has been doubled.



Auto presser foot lifter unit
LE-FA



Variable speed pedal
XC-CVS-3



Lever unit (separated type)
XC-GL-2

Operation panel Compatibility



The current

G Series Control box



XC-G10S (L)-CE operation panel
(No settings backup function)



XC-G500Y-CE operation panel
(settings backup capacity: 2 machines)



The old type: XC-E500-Y operation panel
(settings backup capacity: 1 machines)



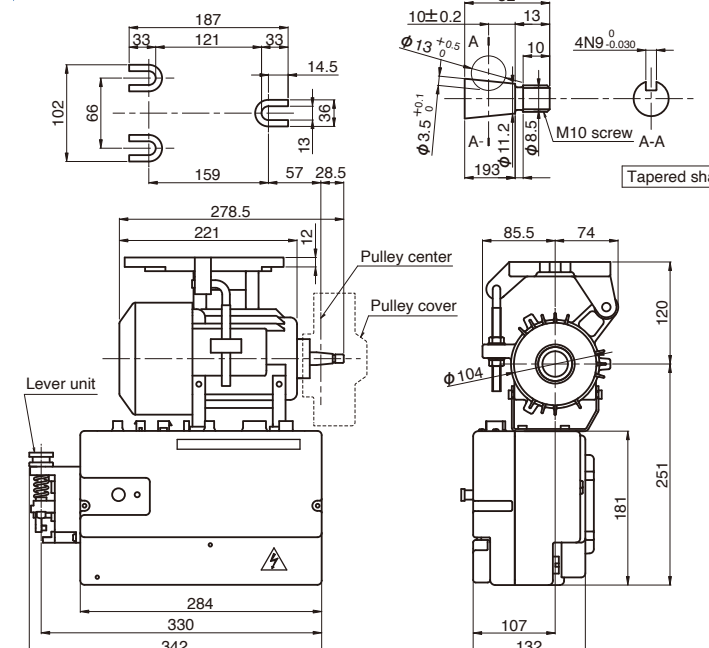
The old type

E, F Series Control box

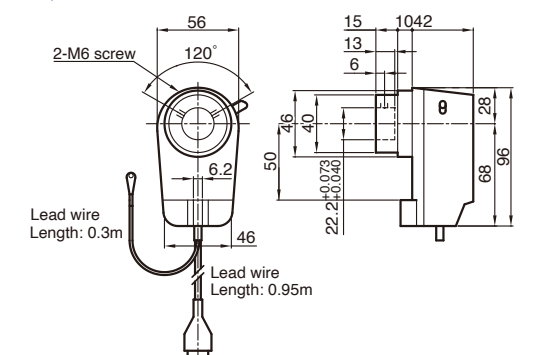
*Note: There are restrictions on the settings backup function.

Dimensions

Control Box / Motor

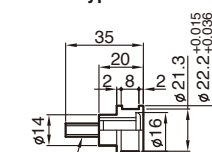


Position Detector XC-KE-01P



Adaptor for position detector attachment

Screw-in type



SM11/32 threads 28 (Brother, Mitsubishi Series)
SM5/16 threads 24 (Juki, Toyota, Singer Series)