

AMS-251

1-needle CNC sewing machine (head turning type)

JUKI



Commitment to “PERFECTION”



AMS-251

OPTION

Camera System : 40210671


Components of camera system	Cameras : Two
	Personal computer : One
	Touch panel monitor : One
	Filming LED light (provided with the automatic illuminance adjustment function)

*Consult your distributor about designs that can be sewn with the AMS-251.

SPECIFICATIONS

Model name	AMS-251
Application	Medium - Heavy
Sewing Area	1,000mm × 600mm
Max. Sewing Speed	2,500sti/min* (for stitch length of 3mm or less)
Needle (at the time of delivery)	DP × 17, #18 - 25 (#23)
Thread	Nm 60/3 - 20/3
Hook	Rotary Hook, Horizontal - Axis, 3 fold - capacity
Head Lifiable	50mm
Storage of pattern data	Main-body memory : Max. 33,000,000 stitches, 999 patterns (max. 50,000 stitches / pattern)
	External Max. 50,000,000 stitches, 999 patterns (max. 50,000 stitches / pattern)
Total weight	950kg
Dimensions	2,400mm(W) × 1,800mm(D) × 1,600mm(H)

*"sti/min" stands for "Stitches per Minute".

	Pallet clamp receiver	Fixing screws, washers
Accessory parts	40181516 ×2pcs 	SM5040855SN ×6pcs WP0410516SD ×6pcs

WHEN YOU PLACE ORDERS

Please note when placing orders, that the model name should be written as follows:


Complete 1 2 3 4 5 6 7 8 9 10 11 12 13 14 15 16 17 18 19 20
AMS251HC10060RSZZ□SH

7	Application	H	for medium to heavy weight materials
8	Palette Clamping Type	C	Standard
9-13	Sewing area	10060	X : 1,000mm Y : 600mm
14	Hook type	R	Rotary Hook
15	Stitch type	S	Lock stitch
16-17	Option	ZZ	Nothing

18	Voltage of Control Box (MC-680)	D	3-phase 200~240V
		K	Single-phase 200~240V
19	Panel	N	Single-phase 200~240V (CE)
		S	Standard (IP420)
20	Start switch	H	2 handed start switch

● To order, please contact your nearest JUKI distributor.

JUKI ECO PRODUCTS The AMS-251 is an eco-friendly product which complies with JUKI ECO PRODUCTS standards for protecting the environment.

 ● The sewing machine complies with the "Juki Group Green Procurement Guidelines" on the use of hazardous substances, which is stricter than other restrictions, such as those of the RoHS Directive.

For details of JUKI ECO PRODUCTS, refer to: http://www.juki.co.jp/eco_e/index.html

*The RoHS Directive is an EU Directive limiting the use of 6 hazardous substances (lead, hexavalent chromium, mercury, cadmium, PBB and PBDE) in electrical and electronic equipment. The Juki Green Procurement Guideline is the voluntarily established criteria to eliminate not only the aforementioned six substances, but also other ones which also adversely affect the environment.



Registered Organization : JUKI CORPORATION Head Office
 The Scope of the Registration : The activities of research, development, design, sales, distribution, and maintenance services of industrial sewing machines, household sewing machines and industrial robots, etc., including sales and maintenance services of data entry systems.

JUKI
JUKI CORPORATION
 SEWING MACHINERY & SYSTEMS BUSINESS UNIT

2-11-1, TSURUMAKI, TAMA-SHI,
 TOKYO 206-8551, JAPAN
 PHONE : (81) 42-357-2383
 FAX : (81) 42-357-2274
<http://www.juki.com>

* Specifications and appearance are subject to change without prior notice for improvement.
 * Read the instruction manual before putting the machine into service to ensure safety.
 * This catalogue prints with environment-friendly soyink on recycle paper.
 * Paper from responsible sources FSC™ C001712

AMS-251

1-needle CNC sewing machine
(head turning type)

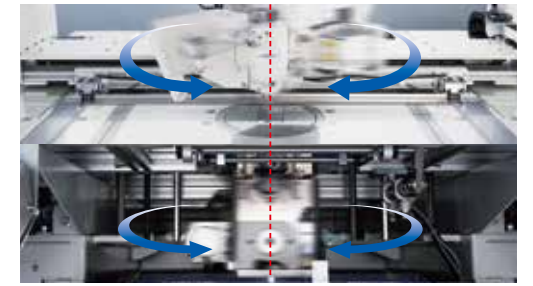


※ CNC : Computer Numerical Control

The machine-head-turning mechanism helps achieve high-quality seams uniformly in every sewing direction

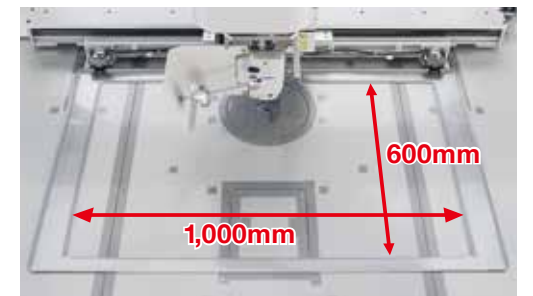
JUKI's unique synchronization technology controls the machine head, hook and feed mechanism, thereby creating the most favorable seams.

In case of continuous circumference sewing, the sewing machine constantly detects the direction of sewing. As a result, consistent-quality seams are produced regardless of the direction of sewing.



With its sewing area of "1,000mm × 600mm" the AMS-251 is best suited to the sewing of decorative stitches and large-size products

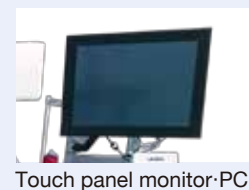
The sewing machine is ideally suited to the sewing of decorative stitches on car seats, luxury bags and school bags, but also to the sewing of large-sized products with zero design tolerance for irregular stitches. In addition, the sewing machine can be used for sewing two or more pieces of small products at a time.



Perforation Camera System (optional)

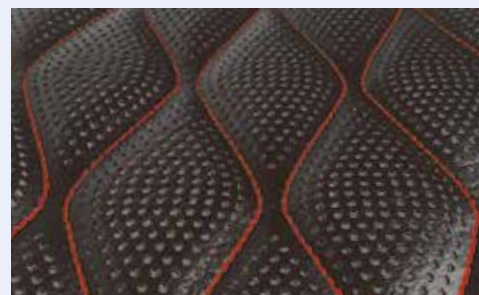
Camera System [No.40210671]

This device contributes to expanded design possibility of decorative stitches for car seats, etc.



<What is the perforation>

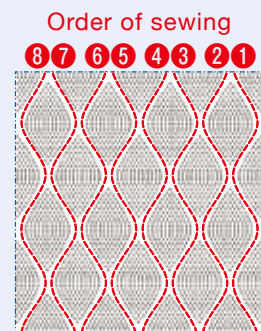
Perforation is a kind of technique for decorating materials. In terms of sewing, perforated materials are leather sheets, etc. that have small perforations in them.
(For improved design, increased sound absorbing ability and improved ventilation characteristic)



Sewing of the perforated leather

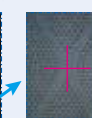
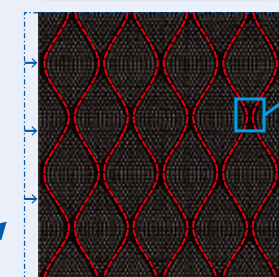
Thanks to JUKI's original image recognition technology, this sewing machine enables sewing of hard-to-sew perforated materials as desired and produces beautifully-finished seams.

Original pattern



When a heavy-weight material is sewn on the sewing machine, the material is likely to shrink gradually during sewing.

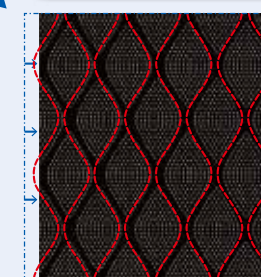
Used



On the touch panel monitor, it is possible to check the camera's recognition points with the live image.

The image recognition device recognizes, with its camera, misalignment of perforations due to the material shrinkage to enable the sewing machine to automatically correct the next sewing position, thereby achieving sewing with increased accuracy.

Not used



If a perforated material is sewn without taking its shrinkage during sewing into account, the needle will fail to enter the correct needle entry points and can enter perforations by mistake. Once the perforated material is sewn incorrectly, it cannot be re-sewn. As a result, the material has to be discarded as waste.