

Supplementary Documentation for Account Settlement for the Third Quarter of FY2009 ending March 2010 on Consolidated Basis

February 9, 2010
Juki Corporation

Mind & Technology

JUKI
Mind & Technology

1-1 Full-year Business Performance Forecast

Net sales and incomes revised downward but improved in Q4 from Q3.

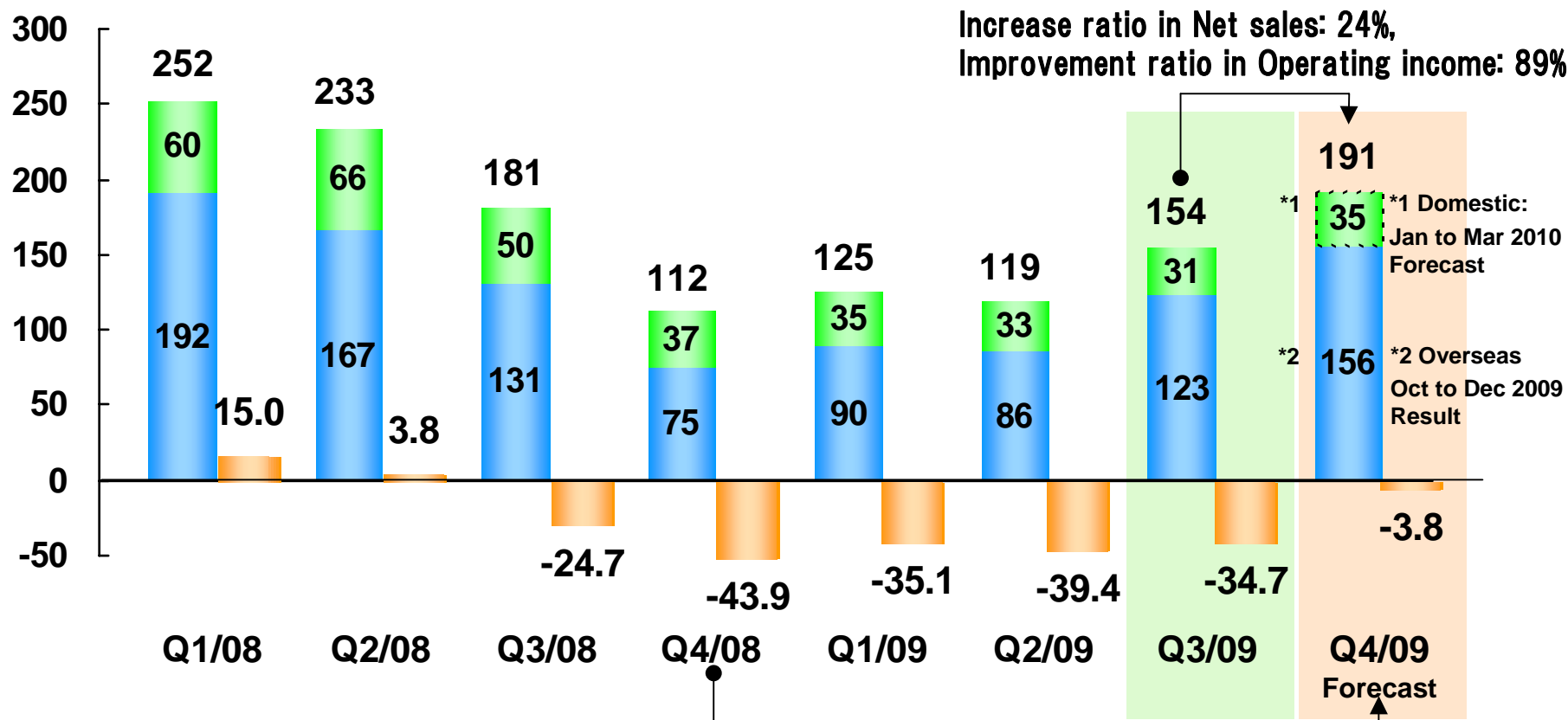
				(Reference)			(Million yen)	
	Forecast (Oct. 6, 2009) (A)	Forecast (Feb. 9, 2010) (B)	(B-A)	1st half (FY2009)	2nd half (FY2009)	Q3	Q4 Forecast	Increase or improvement ratio over Q3
Net sales	63,000	58,800	-4,200	24,353	34,447	15,374	19,073	24.1%
Operating income	-9,000	-11,300	-2,300	-7,454	-3,846	-3,469	-377	89.1%
Ordinary income	-9,300	-11,300	-2,000	-7,534	-3,766	-3,323	-443	86.7%
Current net income	-9,300	-11,400	-2,100	-7,494	-3,906	-3,384	-522	84.6%
Exchange rate To US\$ To Euro	¥95.00 ¥130.00	¥91.00 ¥130.00	△¥4 ±¥0	¥95.98 ¥128.33	¥91.46 ¥132.79	¥92.81 ¥132.97	¥90.12 ¥132.60	— —

1-2-1 Changes in Quarterly Net sales and Operating income

Net sales and Operating income improved in and after Q3 step by step.

(100 Million yen)

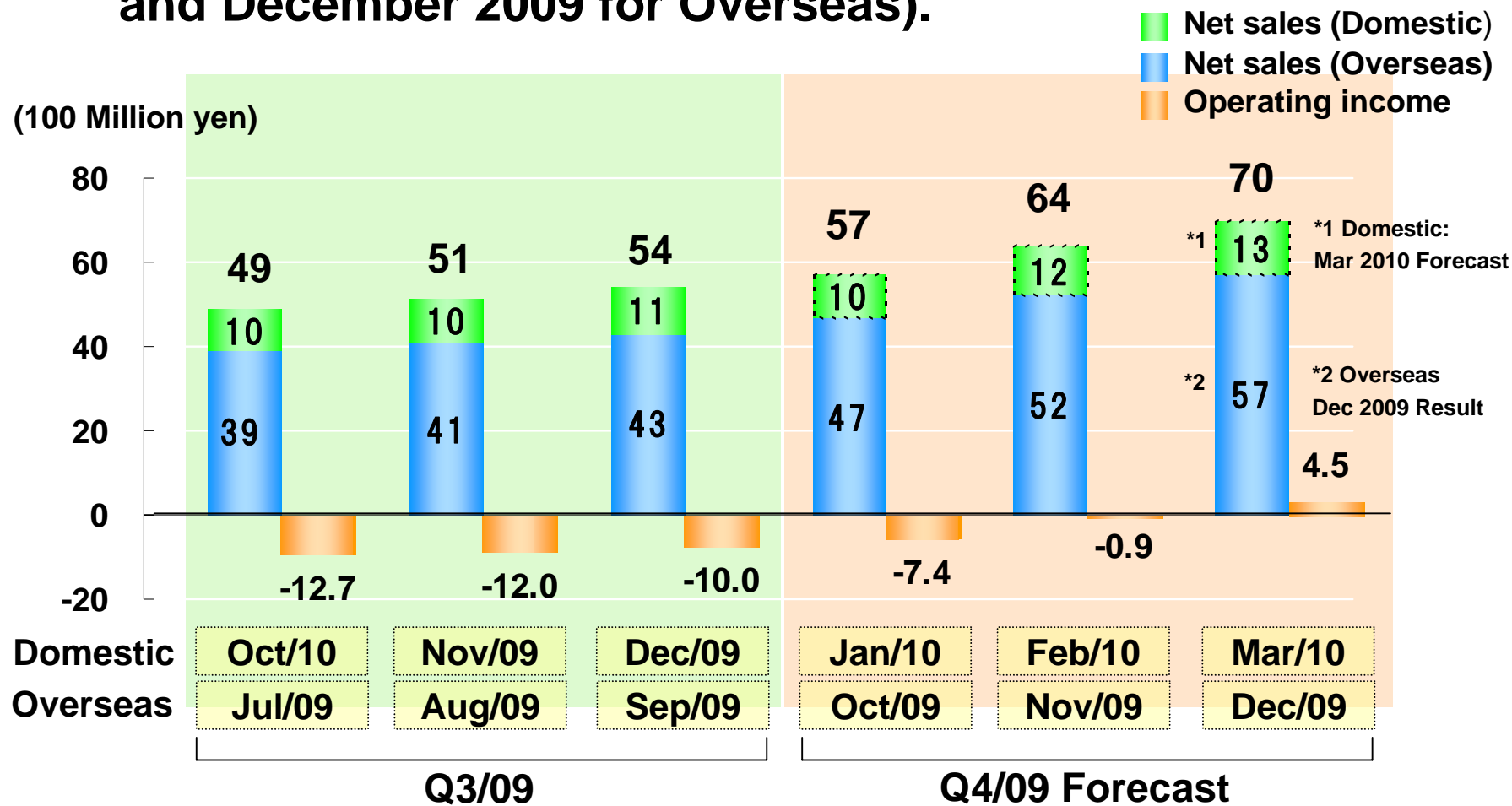
- Net sales (Domestic)
- Net sales (Overseas)
- Operating income



Increase ratio in Net sales: 70%, Improvement ratio in Operating income: 91%

1-2-2 Change in Monthly Net sales and Operating income (2nd half of FY2009)

Return to profitability in Operating income foreseen in the last month of Q4 (March 2010 for Domestic and December 2009 for Overseas).



2-1-1 Full-year Net sales forecast by segment

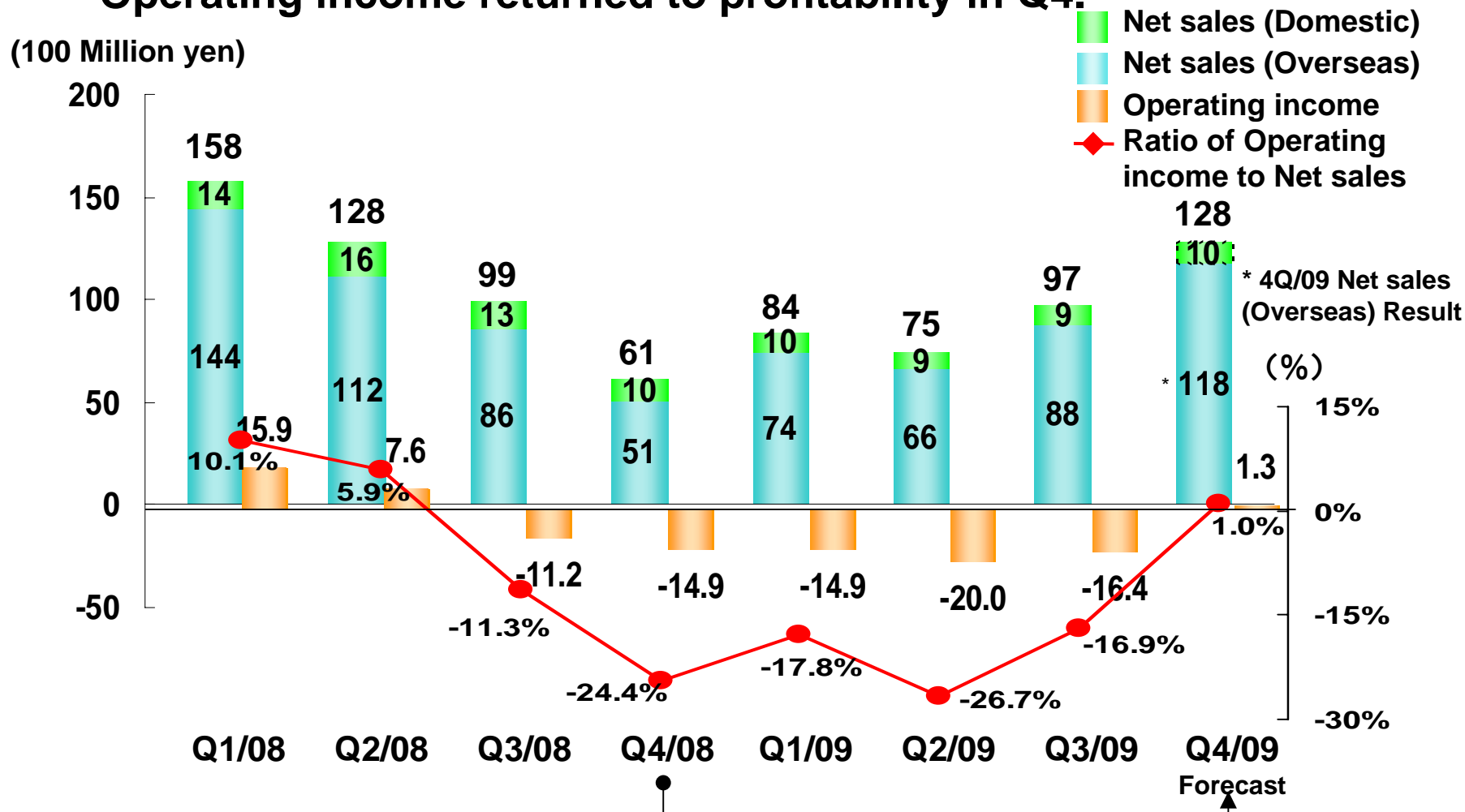
				(Reference)			(Million yen)	
	Forecast (Oct. 6, 2009) (A)	Forecast (Feb. 9, 2010) (B)	(B-A)	Ist half (FY2009)	2nd half (FY2009)	Q3	4Q Forecast	Increase or improvement ratio over Q3
Industrial sewing machines	42,500	38,400	-4,100	15,839	22,561	9,724	12,837	32.0%
SMT Systems	11,500	11,700	200	3,844	7,856	3,772	4,084	8.3%
Household sewing machines	2,400	2,400	0	1,166	1,234	525	709	35.0%
Electric equipment & Precision equipment	2,100	2,300	200	1,281	1,019	505	514	1.8%
Precision casting	3,200	2,700	-500	1,523	1,177	574	603	5.1%
Others	1,300	1,300	0	698	602	274	328	19.7%
Total net sales	63,000	58,800	-4,200	24,353	34,447	15,374	19,073	24.1%

2-1-2 Full-year Operating income forecast by segment

				(Reference)			(Million yen)	
	Forecast (Oct. 6, 2009) (A)	Forecast (Feb. 9, 2010) (B)	(B-A)	Ist half (FY2009)	2nd half (FY2009)	Q3	Q4 Forecast	Increase or improvement ratio over Q3
Industrial sewing machines	-2,800	-5,000	-2,200	-3,486	-1,514	-1,642	128	107.8%
SMT Systems	-3,400	-3,800	-400	-2,670	-1,130	-1,059	-71	93.3%
Household sewing machines	-300	-320	-20	-242	-78	-86	8	109.3%
Electric equipment & Precision equipment	0	0	0	-97	97	39	58	48.7%
Precision casting	0	-80	-80	-4	-76	-59	-17	71.2%
Others	-100	-120	-20	-67	-53	-24	-29	-20.8%
Eliminations & corporate	-2,400	-1,980	420	-884	-1,096	-639	-457	28.5%
Total operating income	-9,000	-11,300	-2,300	-7,454	-3,846	-3,469	-377	89.1%

2-2-1 Industrial sewing machines business (Change in Net sales and Operating income)

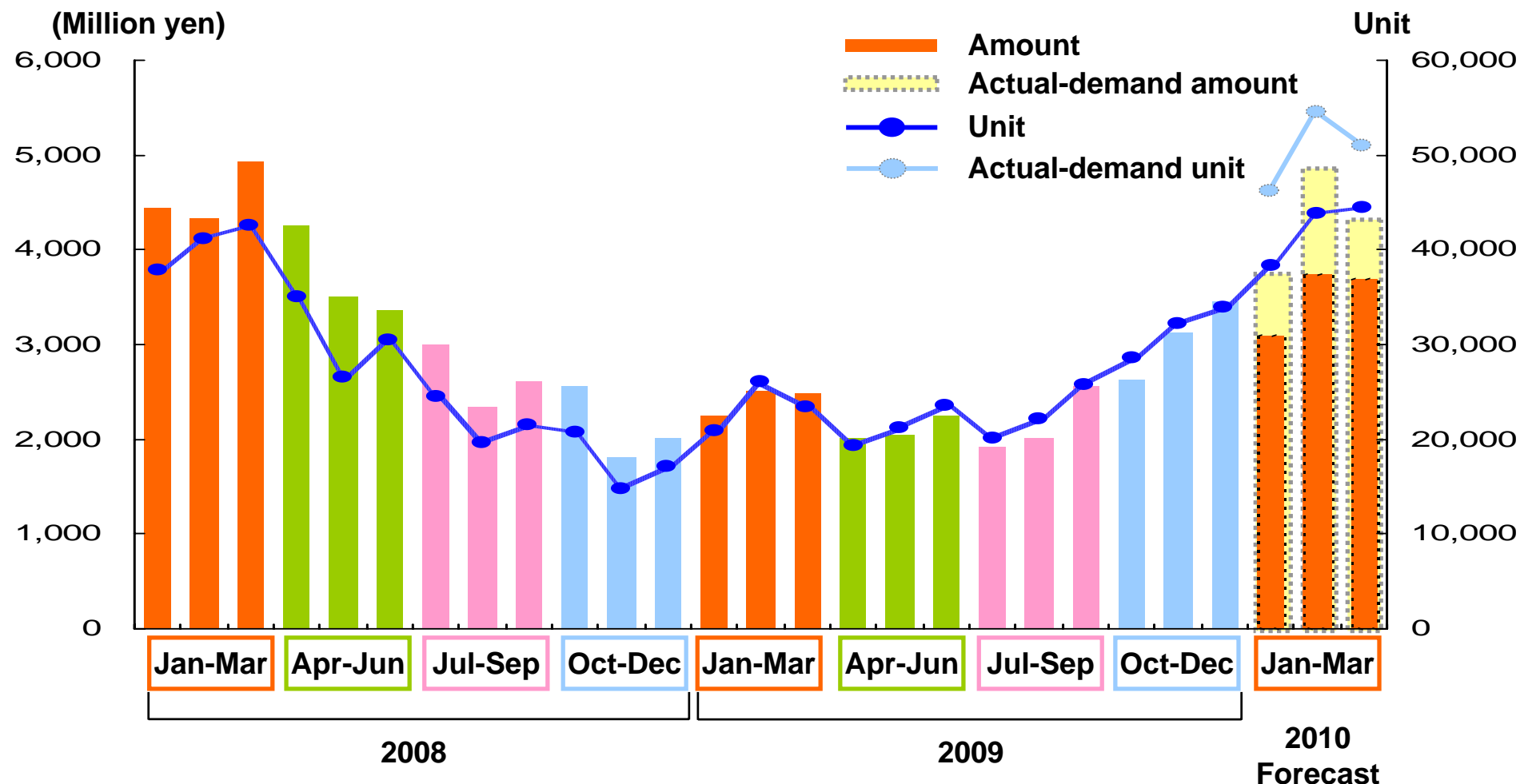
Net sales recovered gradually from Q3 and doubled in Q4 from the same period of the preceding fiscal year. Operating income returned to profitability in Q4.



Increase ratio in Net sales: 110%, Improvement ratio in Operating income: 109%

2-2-2 Industrial sewing machines business (Change in Monthly sales unit and amount, excluding parts etc)

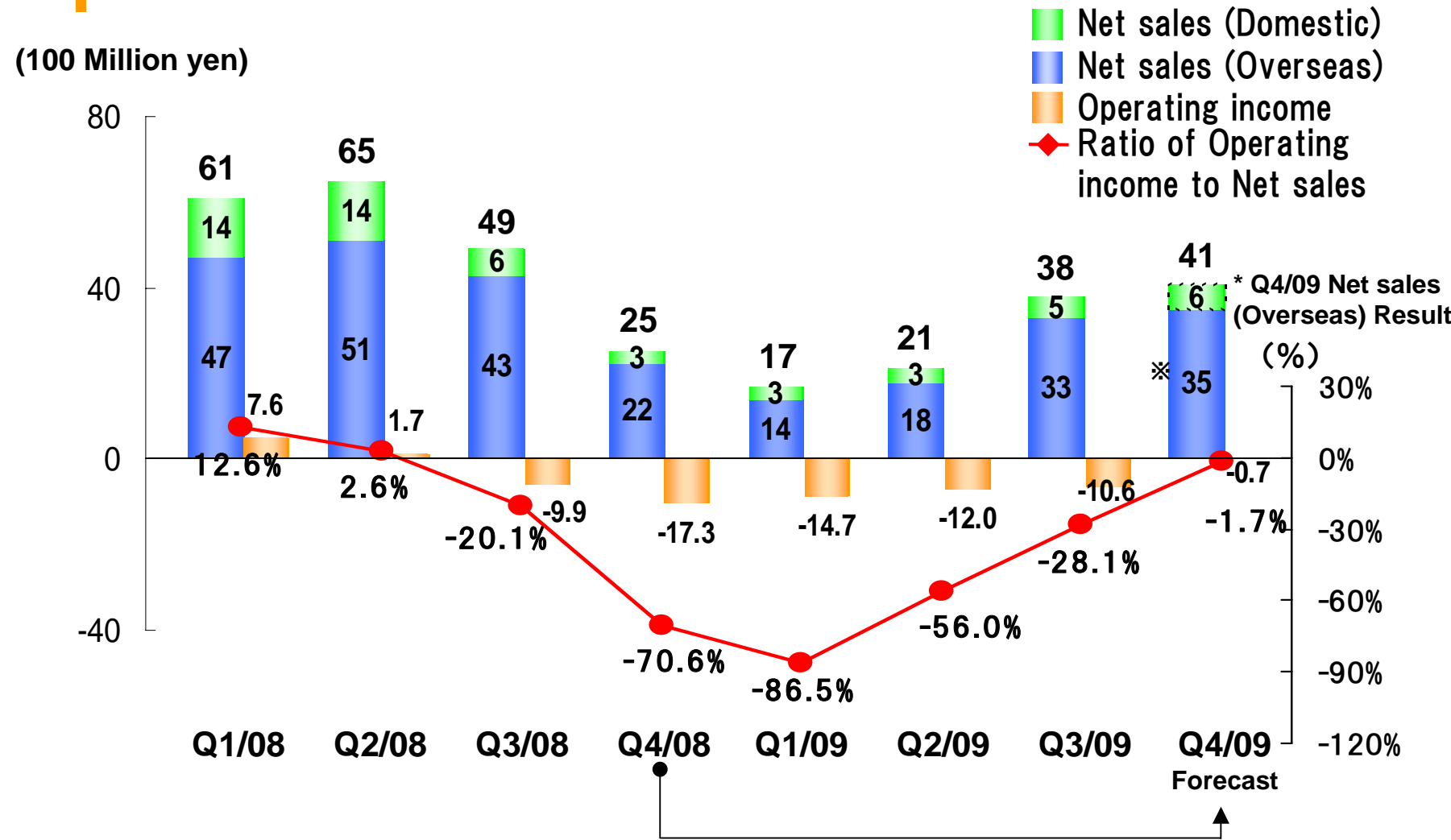
Supply from production insufficient to meet the rapidly increased demand in and after January 2010.



(Note) The above figures don't correspond to those for the settlement of account.

2-3-1 SMT system business (Change in Net sales and Operating income)

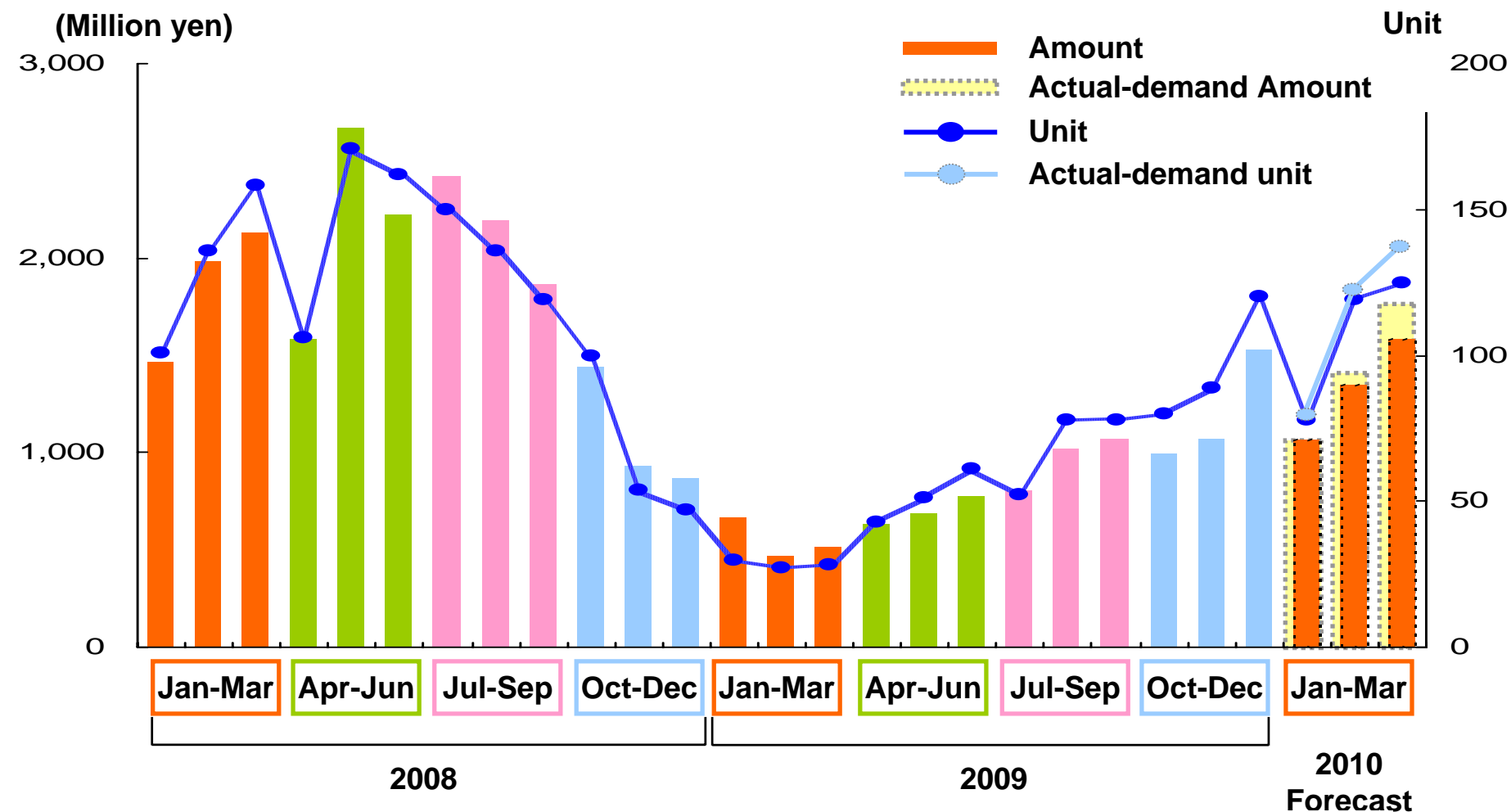
Net sales recovered gradually from the bottom in Q1.



Increase ratio in Net sales: 66%, Improvement ratio in Operating income: 96%

2-3-2 SMT system business (Change in Monthly sales units and amount)

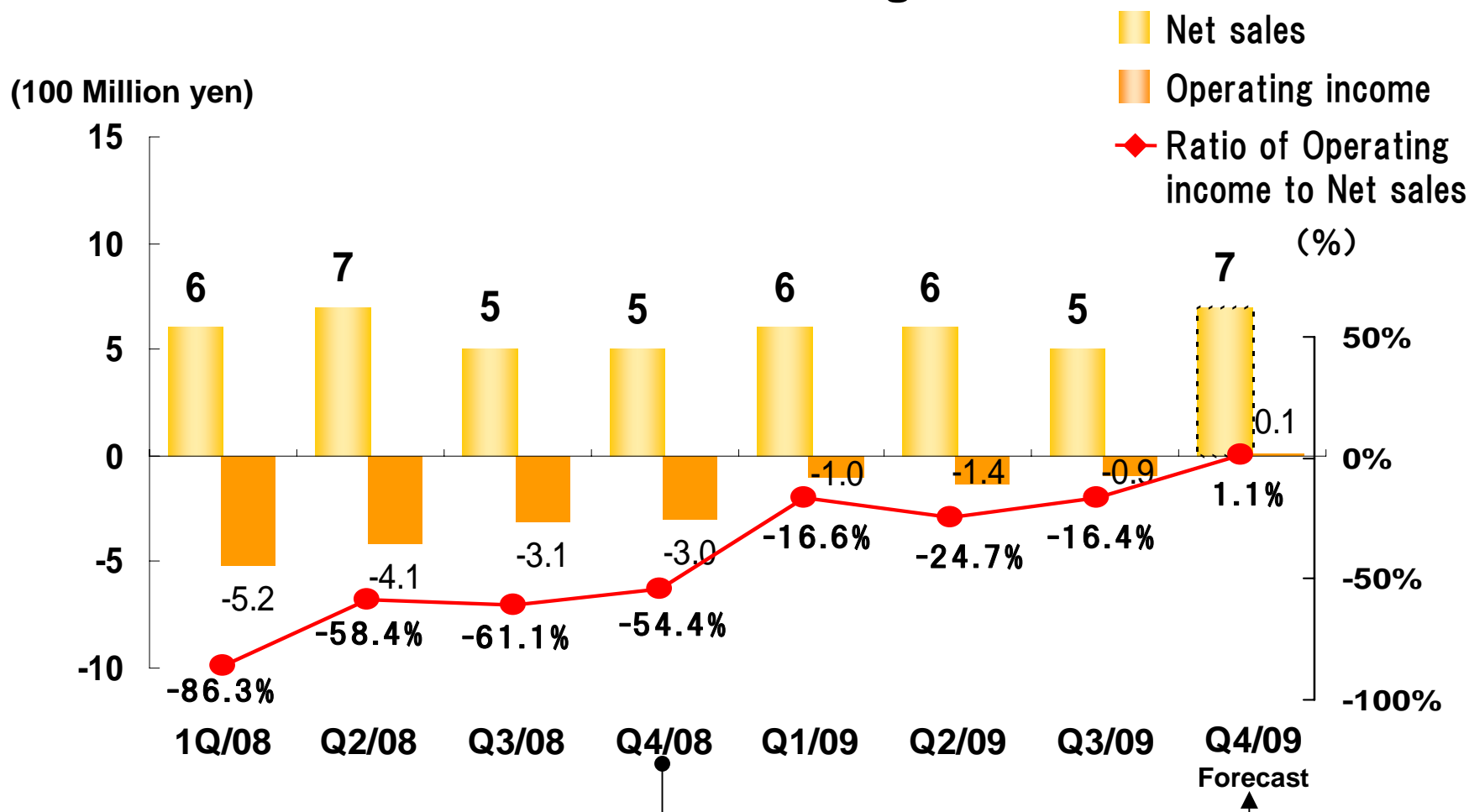
Supply from production insufficient to meet the increased demand in and after January 2010.



(Note) The above figures don't correspond to those for the settlement of account.

2-4 Household sewing machines business (Change in Net sales and Operating income)

Return to profitability foreseen in Q4 due to an effect of business restructuring.



Increase ratio in Net sales: 29%, Improvement ratio in Operating income: 103%

3-1 New 3-year plan (FY2010 to FY2012)

Return to profitability planned from the first year.

(100 Million yen)

	FY2007 Result	FY2008 Result	FY2009 Forecast	New 3-year plan		
				FY2010	FY2011	FY2012
Net sales	1,304	778	588	835	945	1,070
Operating income	124	-50	-113	15	44	86
Ordinary income	115	-53	-113	9	38	80
Exchange rate To US\$ To Euro	¥117.70 ¥161.98	¥102.81 ¥152.07	¥91.00 ¥130.00	1US\$=¥90 1Euro=¥130		

3-2-1 New 3-year plan (Net sales by segment)

(100 Million yen)

	FY2007 Result	FY2008 Result	FY2009 Forecast	New 3-year plan		
				FY2010	FY2011	FY2012
Industrial sewing machines (For emerging markets)	764 (0)	442 (0)	380 (37)	532 (92)	591 (122)	668 (180)
SMT systems (High-speed machines)	298 (0)	200 (15)	117 (13)	207 (31)	252 (66)	294 (95)
Household sewing machines	62	28	28	30	32	38
Precision casting	40	38	27	30	33	34
Others	140	70	36	36	37	36
Total net sales	1,304	778	588	835	945	1,070

(Note 1) Market size of Industrial sewing machines and SMT systems for FY2012 will be estimated to recover by 70% from that for FY2007.

(Note 2) Among Net sales of overseas subsidiaries (JUKI AMERICA and JUKI ITALIA), Net sales of Household sewing machines that has been counted in Industrial sewing machines (200 Million yen for FY2007, 400 Million yen for FY2008, and 400 Million yen for FY2009) was transferred to that of Household sewing machine for a correction.

3-2-2 New 3-year plan (Ordinary income by segment)

(100 Million yen)

	FY2007 Result	FY2008 Result	FY2009 Forecast	New 3-year plan		
				FY2010	FY2011	FY2012
Industrial sewing machines	144	-8	-53	25	38	59
SMT system	14	-25	-37	1	14	29
Household sewing machines	-20	-15	-3	1	2	5
Precision casting and others	0	2	0	1	2	3
Eliminations & corporate	-23	-7	-20	-19	-18	-16
Total ordinary income	115	-53	-113	9	38	80

The prospective future results described in this document are only forecasts determined based on currently available information. Potential risks and uncertain factors are included in the forecast. Accordingly, please note that actual results in the future may differ from the results forecasted herein.

Juki Corporation

Contact: Mr. Michinari Sogawa

Corporate Planning Department

Telephone: 81-3-42-357-2398

Facsimile: 81-3-42-357-2399

URL:<http://www.juki.co.jp/>