

## PM-1 ver.3

Programming software  
for computer-controlled  
sewing machines  
Windows Vista Compatible

*It is easy, accurate, and fast !  
This data programming software  
is full of new functions.*

This software is to input and edit sewing data of JUKI's latest sewing machines.

Its versatile input functions allow to input sewing data of each electronic sewing machine model easily, accurately, and quickly.

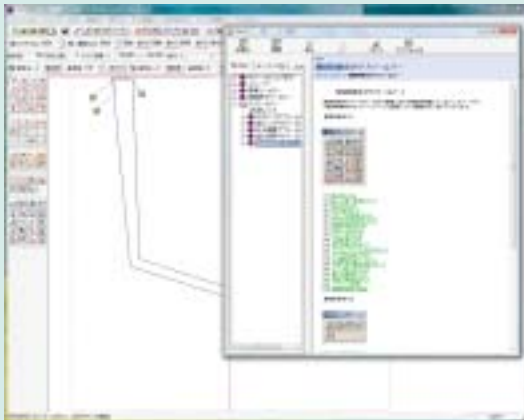
It supports high quality production with high added value by utilizing and creating original data for specific designs and applications.



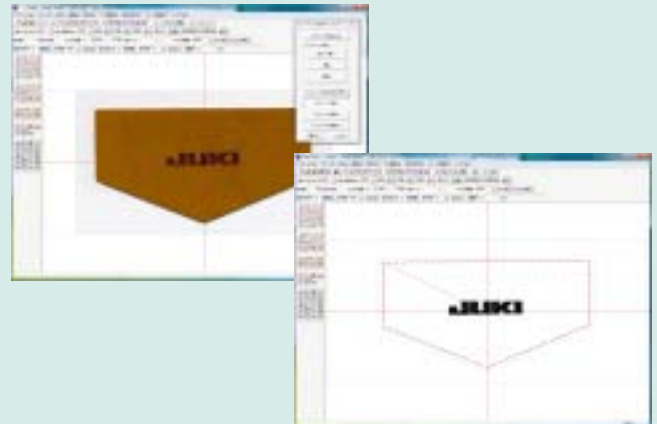
## PM-1 ver.3

**Windows Vista Compatible**

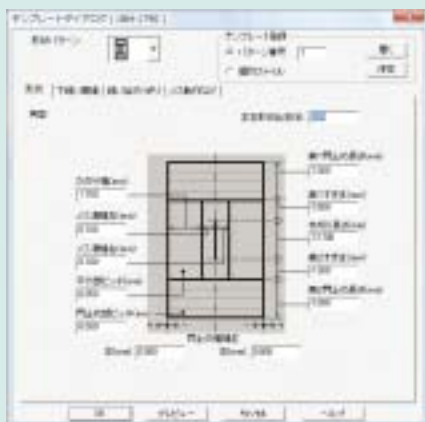
**Create sewing data in an interactive manner during viewing screen displays.**



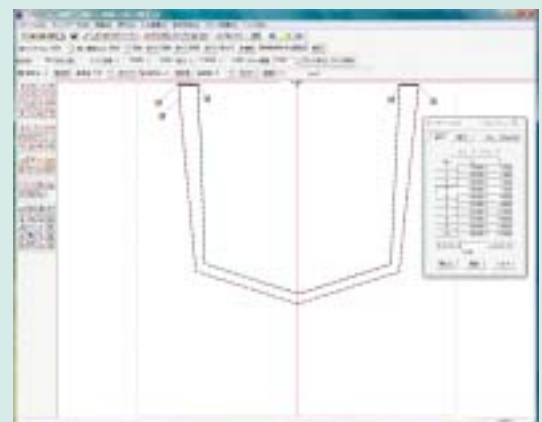
**Input image (BMP file) copied by a scanner.**



**Equipped with template functions that allow to create sewing data easily by input each parameter (For LBH-1790).**



**Coordinates entered can be corrected and re-edited by keyboard input.**



**Equipped with a data preview function that displays data configuration before reading sewing data.**

**Sewing sequences can be checked easily by a function of coloring needle drop points.**

## ■ Models suited for PM-1

AMS series (B type, C type, D type, E type),  
LK-1900 series, LK-1900A series,  
LK-1910, LK-1920, LK-1930 series,  
LZ-2290A series, LBH-1790, MB-1800, AVP-875

## ■ Operating environment for Personal Computer

Item	Specifications	
Type of PC	CPU	PentiumIII300MHz or higher is recommended
	Memory	32MB or higher is recommended (Do not overload OS)
	Hard disk	At least 100MB is required. Locate under "C:" as a device name
	CRT resolution	Recommend 1024 × 768 dots in at least 256 different colors
	Mouse/Keyboard	Equipped with a mouse and a keyboard
Operating System	English version PM-1	English version Windows 2000 or Windows Vista Users are only authorized to use software with administrative rights.
	Other	To be used with digitizer or PC connection, RS-232C channel is required respectively To be used with SmartMedia or CompactFlash™, an adaptor is required. Locate under any device name from "A:" to "Z:" To be used with a floppy disk, at least 1 drive of needed 3.5 inch 2DD (720K bites) / 2HD(1.44M bite) is required. Locate under any device name from "A:" to "Z:" ROM Writer is required to input/output ROM on LK-1900 series

For CompactFlash™, please use genuine JUKI products.

"CompactFlash™" is a registered trademark of SanDisk Corporation, U.S.A.

Microsoft Windows is a trademark of Microsoft Corporation, U.S.A., registered in the U.S.A. and other countries.

All the other corporate names, product/commodity names listed here are trademarks or registered trademarks of their respective companies.

By connecting with a personal computer line, sewing machine equipped with the latest operation panel IP series can perform sew-off and data can be checked and edited on the spot.

### IP-110



CompactFlash



Connected to a personal computer\*

### IP-310/IP-410



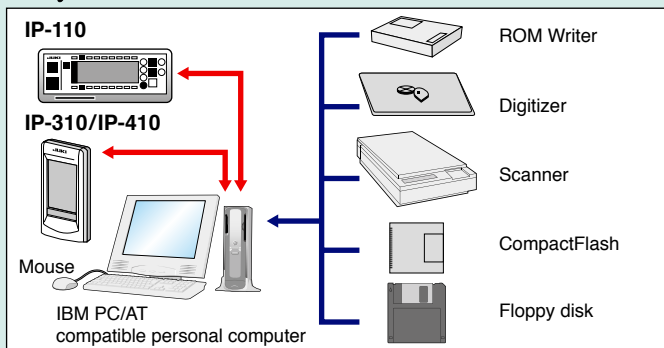
CompactFlash



Connected to a personal computer\*

\* Use a commercially-available communication cable RS-232C (Reverse type:Female 9 pins).

## ■ System Formation



IP-110 For LZ-2290A	Through a PC on-line connection, sew-off can be performed and entering and correcting data is possible on the spot. (It cannot be connected with standard panels of LBH-1790 and LK-1900A.)
IP-310 For LBH-1790	
IP-410 For LK-1900A, AMS-210E series	
ROM Writer	Required to enter pattern data in ROM for LK-1900 series and AMS-205/206.
Digitizer	Use to input from the original print.
SmartMedia CompactFlash Reader/Writer	Required to enter pattern data into SmartMedia and CompactFlash
Floppy disk Driver□	Required to input data into disks of AMS series and AVP, excluding AMS-205 and 206.
Scanner	Able to trace images from the original and input data (Use BMP file).

## ■ Digitizer

The following is specifications of digitizer for PM-1.

Item	Specifications	
Digitizer	Connect with RS-232C (any port from COM1 to COM120) to input digitizer.	
	Input data format	Format prepared by Graphtech Co., Ltd., conforming to the digitizer input format Binary-1 and Binary-2.
	Mode	Use Stream Mode, 20pps
	Resolution	0.1mm
	Baud rate	9600bps

## ■ ROM Writer

ROM writer is required to read and write ROM data with PM-1.

Item	Specifications	
To be used with PM-1 data file input/output functions	ROM Writer has to be able to read and write ROM of sewing machines as well as to input/output Intel HEX file through PC connection.	

**JUKI**®  
JUKI CORPORATION  
MARKETING & SALES H.Q.

8-2-1, KOKURYO-CHO, CHOFU-SHI,  
TOKYO 182-8655, JAPAN  
PHONE : (81) 3-3480-2357, 2358  
FAX : (81) 3-3430-4909  
http://www.juki.com

\* Specifications and appearance are subject to change without prior notice for improvement.  
\* Read the instruction manual before putting the machine into service to ensure safety.  
\* This catalogue prints with environment-friendly soy ink on recycle paper.



JUKI CORPORATION HEAD OFFICE  
Juki Corporation operates an environmental management system to promote and conduct the following as the company engages in the research, development, design, sales, distribution, and maintenance of industrial sewing machines, household sewing machines, industrial robots, etc. and in the provision of sales and maintenance services for data entry systems:  
①The development of products and engineering processes that are safe to the environment.  
②Green procurement and green purchasing  
③Energy conservation (reduction in carbon-dioxide emissions)  
④Resource saving (reduction of papers purchased, etc.)  
⑤Reduction and recycling of waste  
⑥Improvement of logistics efficiency (modal shift and improvement of packaging, packing, etc.)